

**SURF** - LEGRABOX - K-SYSTEM

**COMBILINE** - LEGRABOX

**PIX** - TANDEMBOX

**BLINK** - TANDEMBOX - LEGRABOX

**FUTURA** - TANDEMBOX

**PLANNER** - TANDEMBOX





ACCESSORI PER CASSETTI / DRAWER ACCESSORIES

# **SURF** PER SPONDE LEGRABOX FOR LEGRABOX SIDES

alluminio verniciato peltrox e rovere  
*Peltrox coated aluminium and oak*

ernestomeda



ACCESSORI PER CASSETTI / DRAWER ACCESSORIES

# SURF PER SPONDE LEGRABOX FOR LEGRABOX SIDES

alluminio verniciato peltrox e rovere  
*Peltrox coated aluminium and oak*

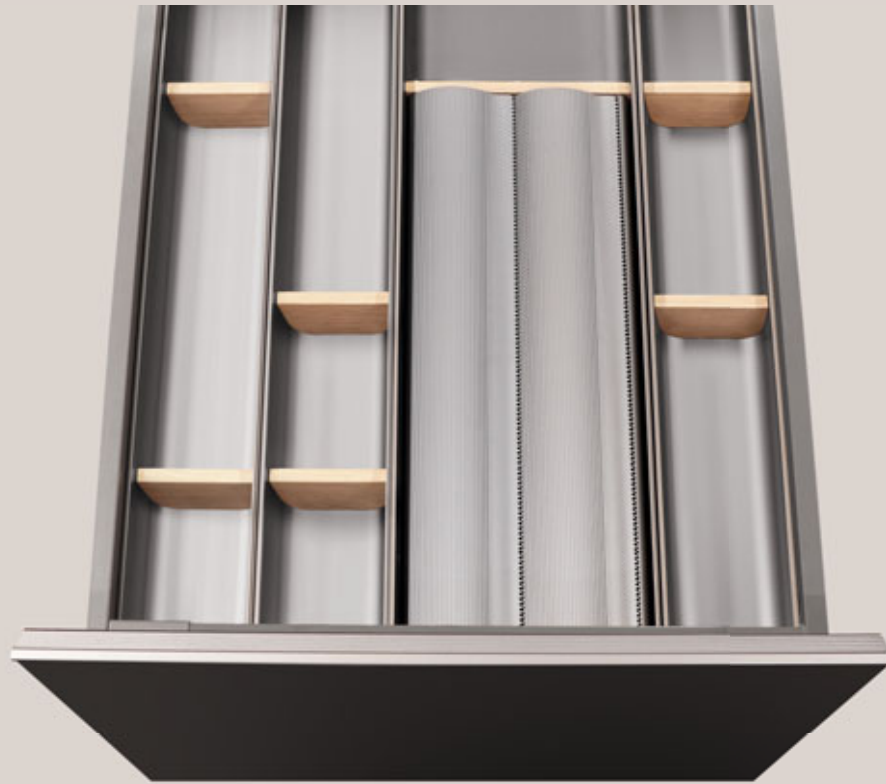
[ernestomeda](http://ernestomeda.com)

# “SURF”

ESEMPI DI COMPOSIZIONI PER CASSETTI CON SPONDE LEGRABOX  
COMPOSITION EXAMPLES FOR DRAWERS WITH LEGRABOX SIDES

ernestomeda

**PORTAPOSATE SURF PER CASSETTO L.45CM PROF. 60 TIPO B**  
SURF CUTLERY TRAY FOR DRAWER W.45CM DEPTH 60 TYPE B



**PORTAPOSATE SURF PER CASSETTO L.45CM PROF. 60 TIPO C**  
SURF CUTLERY TRAY FOR DRAWER W.45CM DEPTH 60 TYPE C



# “SURF”

ESEMPI DI COMPOSIZIONI PER CASSETTI CON SPONDE LEGRABOX  
COMPOSITION EXAMPLES FOR DRAWERS WITH LEGRABOX SIDES

ernestomeda

**PORTAPOSATE SURF PER CASSETTO L.60CM PROF. 60 TIPO F**  
SURF CUTLERY TRAY FOR DRAWER W.60CM DEPTH 60 TYPE F



**PORTAPOSATE SURF PER CASSETTO L.60CM PROF. 60 TIPO G**  
SURF CUTLERY TRAY FOR DRAWER W.60CM DEPTH 60 TYPE G



# “SURF”

ESEMPI DI COMPOSIZIONI PER CASSETTI CON SPONDE LEGRABOX  
COMPOSITION EXAMPLES FOR DRAWERS WITH LEGRABOX SIDES

ernestomeda

**PORTAPOSATE SURF PER CASSETTO L.90 E PROFONDO 70CM TIPO I**  
SURF CUTLERY TRAY FOR DRAWER W.90 DEPTH 70CM TYPE I



**PORTAPOSATE SURF PER CASSETTO L.90 E PROFONDO 70CM TIPO J2**  
SURF CUTLERY TRAY FOR DRAWER W.90 DEPTH 70CM TYPE J2



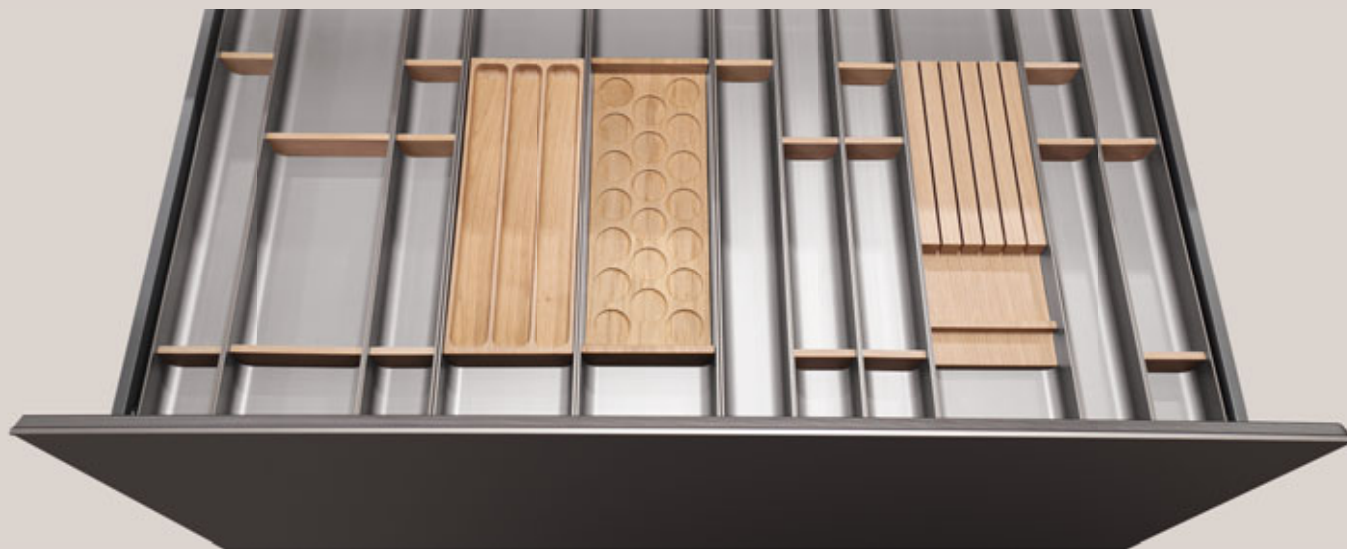
N.B. Si segnala che gli accessori porta barattoli e portaspezie necessitano di un vano libero superiore di minimo 12 cm.  
N.B. An empty space of at least 12 cm is required above the jar rack and spice rack accessories.

# “SURF”

ESEMPI DI COMPOSIZIONI PER CASSETTI CON SPONDE LEGRABOX  
COMPOSITION EXAMPLES FOR DRAWERS WITH LEGRABOX SIDES

ernestomeda

**PORTAPOSATE SURF PER CASSETTO LEGRABOX L.120 E PROFONDO 70CM TIPO K**  
SURF CUTLERY TRAY FOR DRAWER W.120 DEPTH 70CM TYPE K



**PORTAPOSATE SURF PER CASSETTO LEGRABOX L.120 E PROFONDO 70CM TIPO L3**  
SURF CUTLERY TRAY FOR DRAWER W.120 DEPTH 70CM TYPE L3

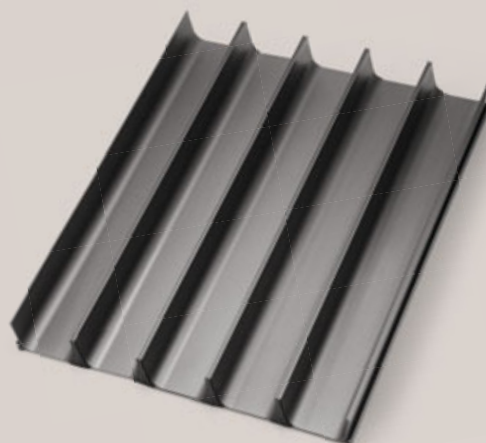


N.B. Si segnala che gli accessori porta barattoli e portaspezie necessitano di un vano libero superiore di minimo 12 cm.  
N.B. An empty space of at least 12 cm is required above the jar rack and spice rack accessories.



**PORTAPOSATE SURF TIPO A PER CASSETTO L. 45**  
**SURF CUTLERY TRAY TYPE A FOR DRAWER W. 45**

Struttura in alluminio verniciato peltrox.  
N.5 moduli per accessori tipo A.  
Peltrox coated aluminium structure.  
5 modules for type A accessories.



31107700

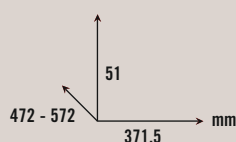
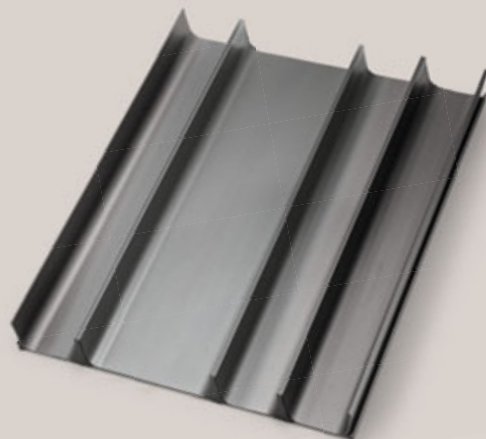
PROFONDITÀ 60  
DEPTH 60

31107703

PROFONDITÀ 70  
DEPTH 70

**PORTAPOSATE SURF TIPO B PER CASSETTO L. 45**  
**SURF CUTLERY TRAY FOR DRAWER W. 45 TYPE B**

Struttura in alluminio verniciato peltrox.  
N.3 moduli per accessori tipo A.  
N.1 modulo per accessori tipo B.  
Peltrox coated aluminium structure.  
3 modules for type A accessories.  
1 module for type B accessories.



31107701

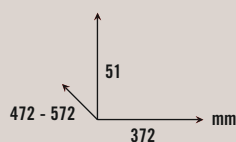
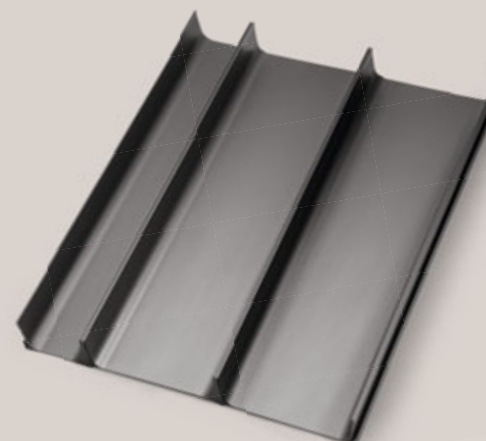
PROFONDITÀ 60  
DEPTH 60

31107704

PROFONDITÀ 70  
DEPTH 70

**PORTAPOSATE SURF TIPO C PER CASSETTO L. 45**  
**SURF CUTLERY TRAY FOR DRAWER W. 45 TYPE C**

Struttura in alluminio verniciato peltrox.  
N.1 modulo per accessori tipo A.  
N.2 moduli per accessori tipo B.  
Peltrox coated aluminium structure.  
1 module for type A accessories.  
2 modules for type B accessories.



31107702

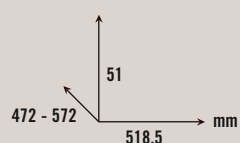
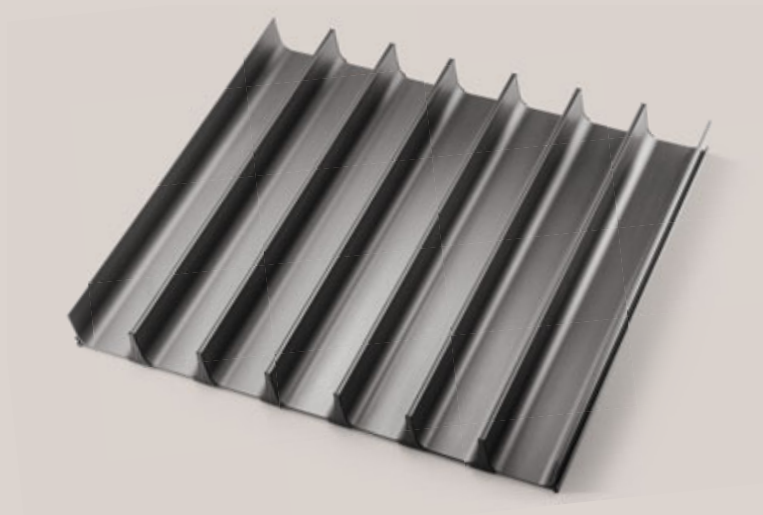
PROFONDITÀ 60  
DEPTH 60

31107705

PROFONDITÀ 70  
DEPTH 70

**PORTAPOSATE SURF TIPO D PER CASSETTO L. 45**  
**SURF CUTLERY TRAY FOR DRAWER W. 45 TYPE D**

Struttura in alluminio verniciato peltrox.  
N.7 moduli per accessori tipo A.  
Peltrox coated aluminium structure.  
7 modules for type A accessories.



31107706

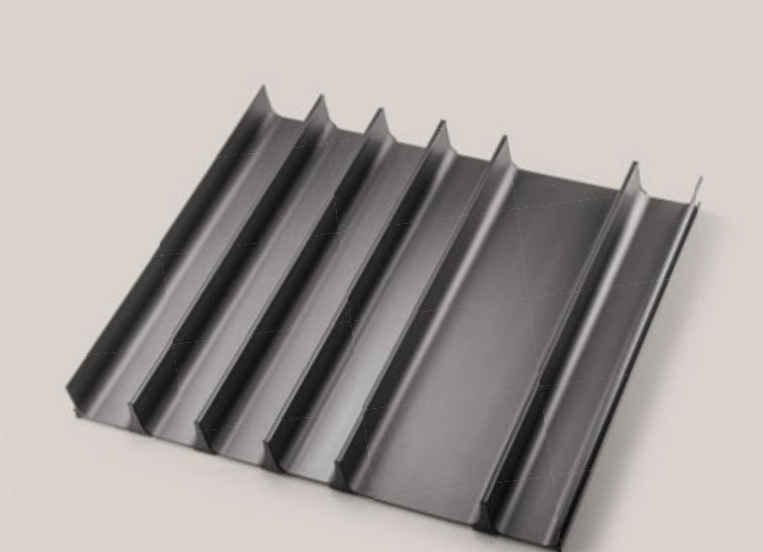
PROFONDITÀ 60  
DEPTH 60

31107710

PROFONDITÀ 70  
DEPTH 70

**PORTAPOSATE SURF TIPO E PER CASSETTO L. 60**  
**SURF CUTLERY TRAY FOR DRAWER W. 60 TYPE E**

Struttura in alluminio verniciato peltrox.  
N.5 moduli per accessori tipo A.  
N.1 modulo per accessori tipo B.  
Peltrox coated aluminium structure.  
5 modules for type A accessories.  
1 module for type B accessories.



31107707

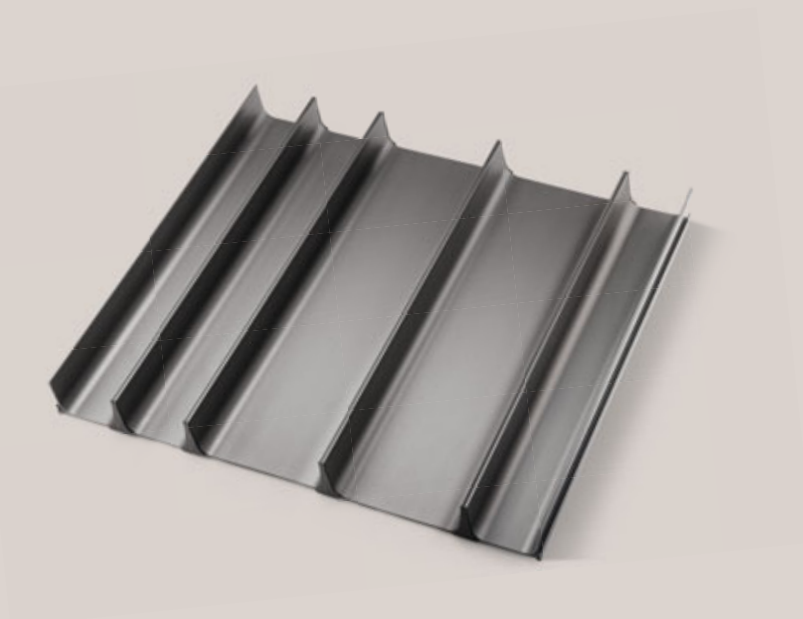
PROFONDITÀ 60  
DEPTH 60

31107711

PROFONDITÀ 70  
DEPTH 70

**PORTAPOSATE SURF TIPO F PER CASSETTO L. 60**  
**SURF CUTLERY TRAY FOR DRAWER W. 60 TYPE F**

Struttura in alluminio verniciato peltrox.  
N.3 moduli per accessori tipo A.  
N.2 moduli per accessori tipo B.  
Peltrox coated aluminium structure.  
3 modules for type A accessories.  
2 module for type B accessories.



31107708

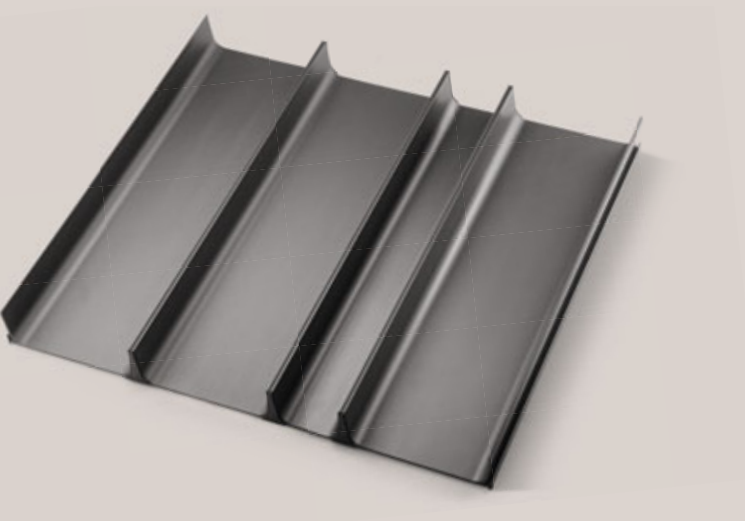
PROFONDITÀ 60  
DEPTH 60

31107712

PROFONDITÀ 70  
DEPTH 70

**PORTAPOSATE SURF TIPO G PER CASSETTO L. 60**  
**SURF CUTLERY TRAY FOR DRAWER W. 60 TYPE G**

Struttura in alluminio verniciato peltrox.  
N.1 modulo per accessori tipo A.  
N.3 moduli per accessori tipo B.  
Peltrox coated aluminium structure.  
1 modules for type A accessories.  
3 module for type B accessories.



31107709

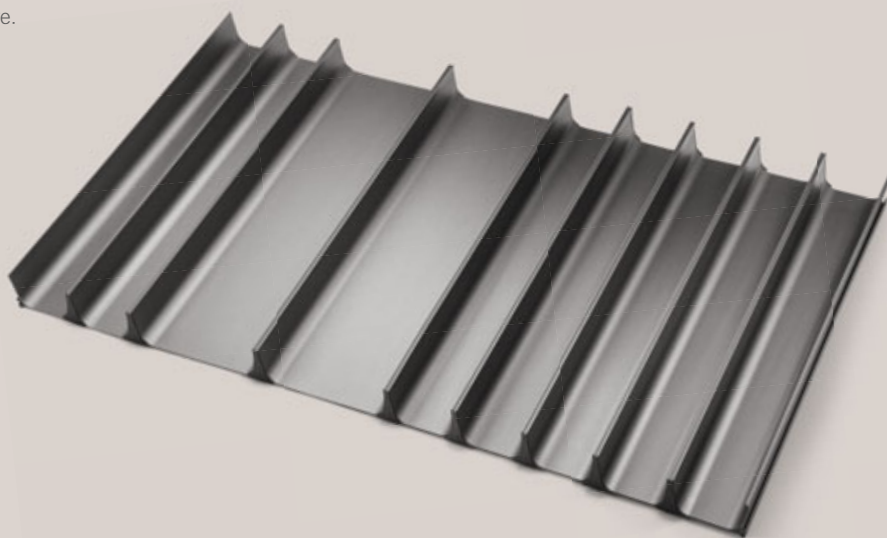
PROFONDITÀ 60  
DEPTH 60

31107713

PROFONDITÀ 70  
DEPTH 70

**PORTAPOSATE SURF TIPO H PER CASSETTO L. 90**  
**SURF CUTLERY TRAY FOR DRAWER W. 90 TYPE H**

Struttura in alluminio verniciato peltrox.  
N.7 moduli per accessori tipo A.  
N.2 moduli per accessori tipo B.  
Peltrox coated aluminium structure.  
7 modules for type A accessories.  
2 module for type B accessories.



31107714

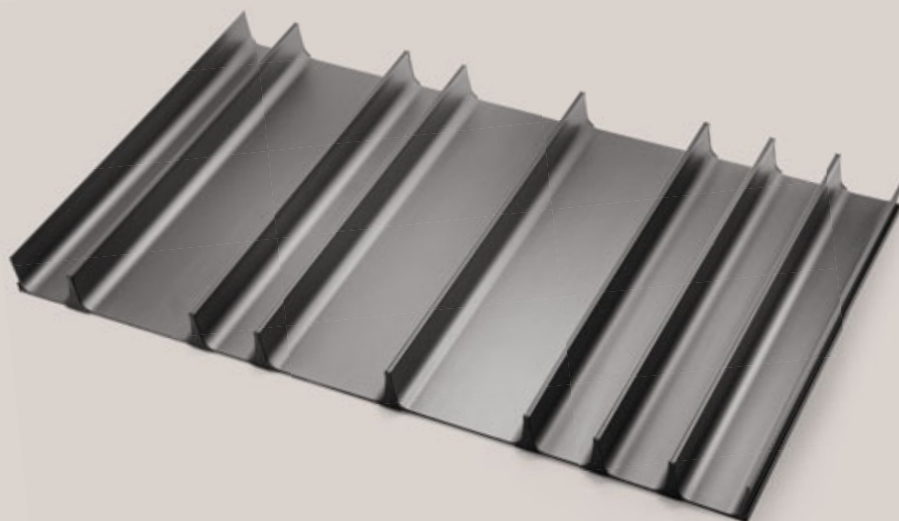
PROFONDITÀ 60  
DEPTH 60

31107720

PROFONDITÀ 70  
DEPTH 70

**PORTAPOSATE SURF TIPO I PER CASSETTO L. 90**  
**SURF CUTLERY TRAY FOR DRAWER W. 90 TYPE I**

Struttura in alluminio verniciato peltrox.  
N.5 moduli per accessori tipo A.  
N.3 moduli per accessori tipo B.  
Peltrox coated aluminium structure.  
5 modules for type A accessories.  
3 module for type B accessories.



31107715

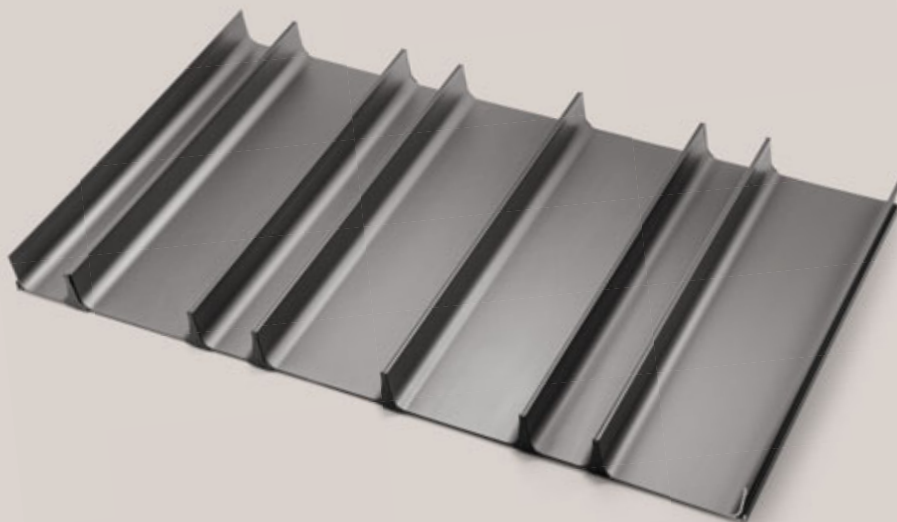
PROFONDITÀ 60  
DEPTH 60

31107721

PROFONDITÀ 70  
DEPTH 70

**PORTAPOSATE SURF TIPO J1 PER CASSETTO L. 90**  
**SURF CUTLERY TRAY FOR DRAWER W. 90 TYPE J1**

Struttura in alluminio verniciato peltrox.  
N.3 moduli per accessori tipo A.  
N.4 moduli per accessori tipo B.  
Peltrox coated aluminium structure.  
3 modules for type A accessories.  
4 module for type B accessories.



31107716

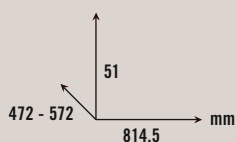
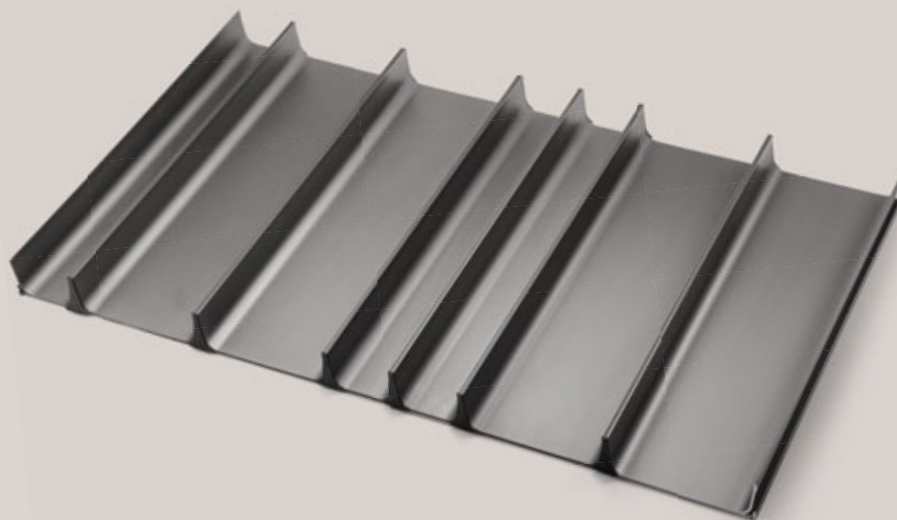
PROFONDITÀ 60  
DEPTH 60

31107722

PROFONDITÀ 70  
DEPTH 70

**PORTAPOSATE SURF TIPO J2 PER CASSETTO L. 90**  
**SURF CUTLERY TRAY FOR DRAWER W. 90 TYPE J2**

Struttura in alluminio verniciato peltrox.  
N.3 moduli per accessori tipo A.  
N.4 moduli per accessori tipo B.  
Peltrox coated aluminium structure.  
3 modules for type A accessories.  
4 module for type B accessories.



31107717

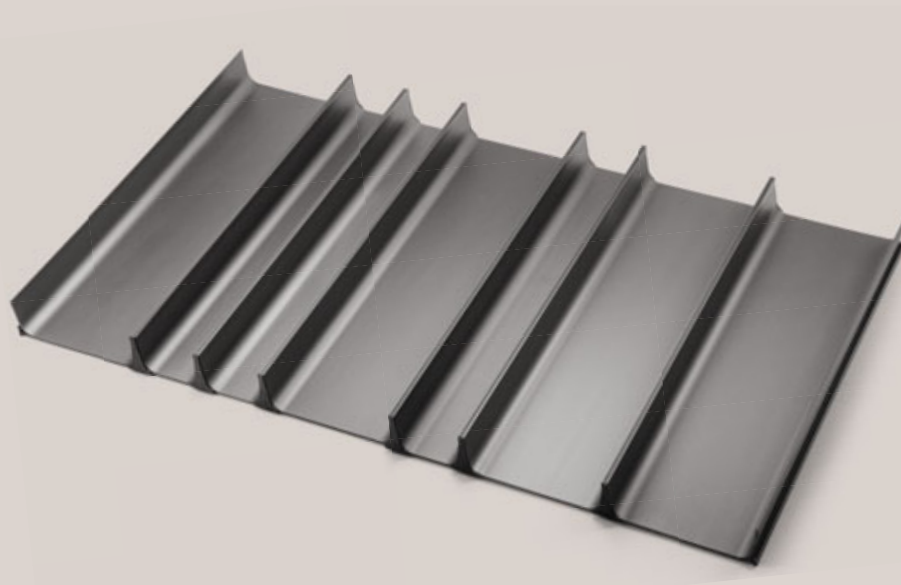
PROFONDITÀ 60  
DEPTH 60

31107723

PROFONDITÀ 70  
DEPTH 70

**PORTAPOSATE SURF TIPO J3 PER CASSETTO L. 90**  
**SURF CUTLERY TRAY FOR DRAWER W. 90 TYPE J3**

Struttura in alluminio verniciato peltrox.  
N.3 moduli per accessori tipo A.  
N.4 moduli per accessori tipo B.  
Peltrox coated aluminium structure.  
3 modules for type A accessories.  
4 module for type B accessories.



31107718

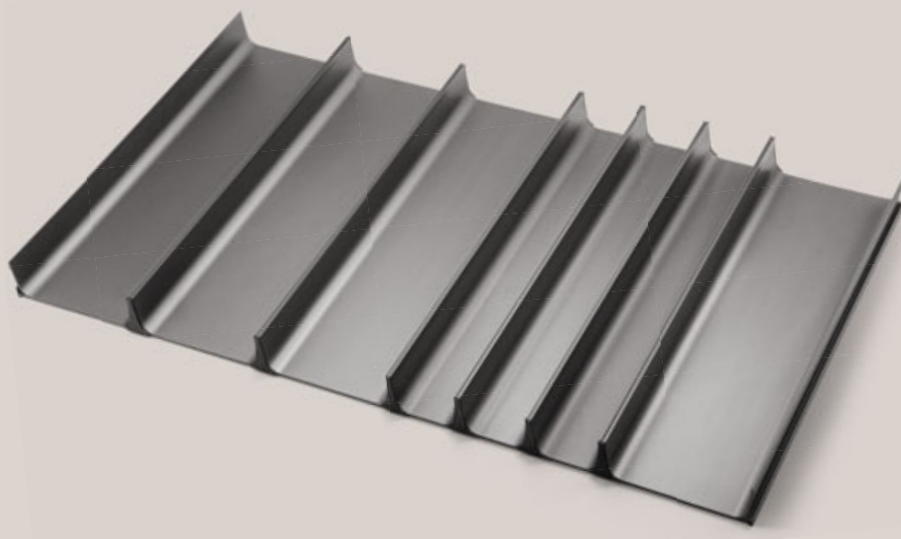
PROFONDITÀ 60  
DEPTH 60

31107724

PROFONDITÀ 70  
DEPTH 70

**PORTAPOSATE SURF TIPO J4 PER CASSETTO L. 90**  
**SURF CUTLERY TRAY FOR DRAWER W. 90 TYPE J4**

Struttura in alluminio verniciato peltrox.  
N.3 moduli per accessori tipo A.  
N.4 moduli per accessori tipo B.  
Peltrox coated aluminium structure.  
3 modules for type A accessories.  
4 module for type B accessories.



31107719

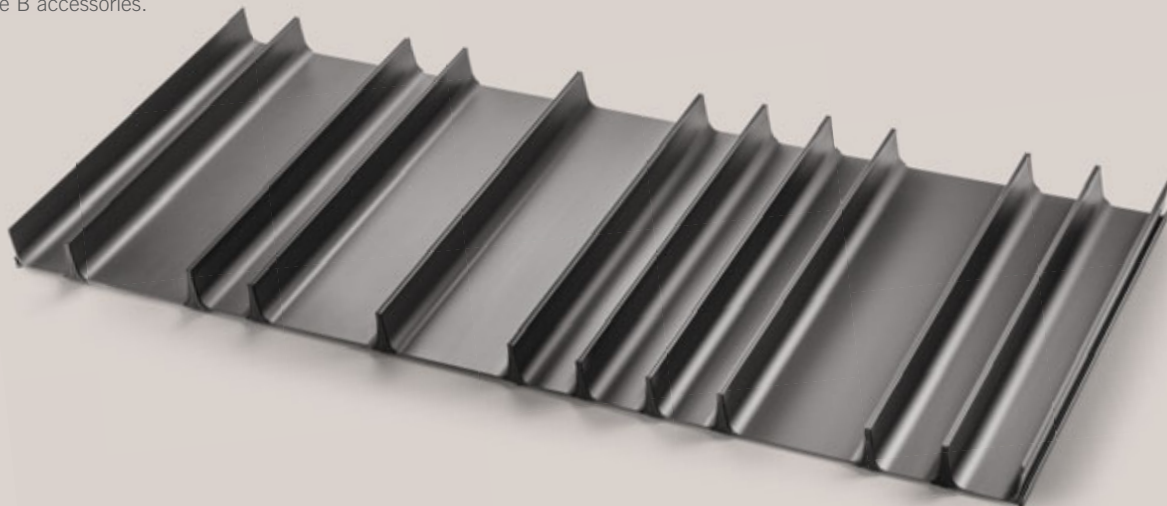
PROFONDITÀ 60  
DEPTH 60

31107725

PROFONDITÀ 70  
DEPTH 70

**PORTAPOSATE SURF TIPO K PER CASSETTO L. 120**  
**SURF CUTLERY TRAY FOR DRAWER W. 120 TYPE K**

Struttura in alluminio verniciato peltrox.  
N.7 moduli per accessori tipo A.  
N.4 moduli per accessori tipo B.  
Peltrox coated aluminium structure.  
7 modules for type A accessories.  
4 module for type B accessories.



31107726

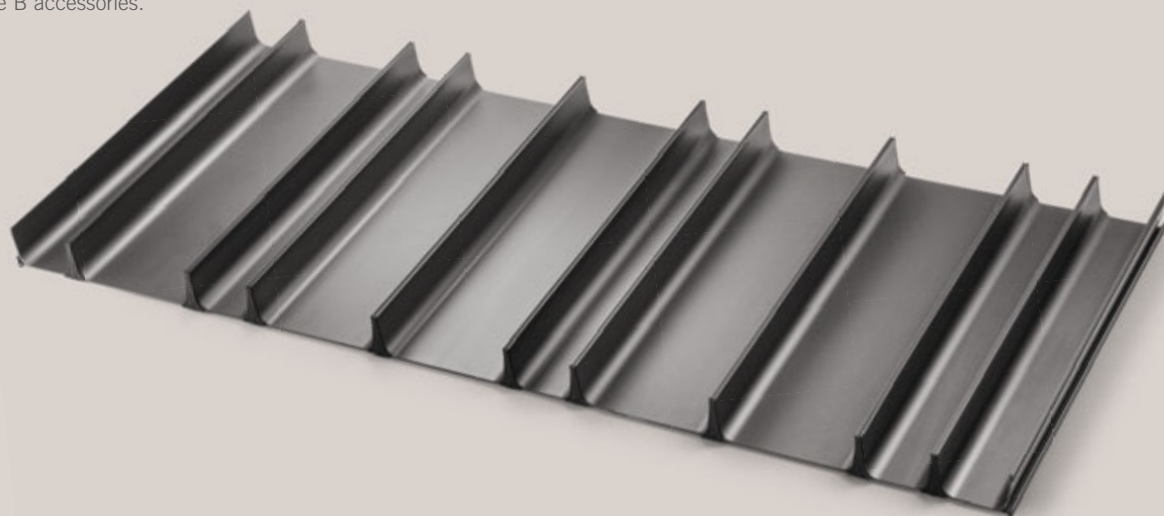
PROFONDITÀ 60  
DEPTH 60

31107733

PROFONDITÀ 70  
DEPTH 70

**PORTAPOSATE SURF TIPO L1 PER CASSETTO L. 120**  
**SURF CUTLERY TRAY FOR DRAWER W. 120 TYPE L1**

Struttura in alluminio verniciato peltrox.  
N.5 moduli per accessori tipo A.  
N.5 moduli per accessori tipo B.  
Peltrox coated aluminium structure.  
5 modules for type A accessories.  
5 module for type B accessories.



31107727

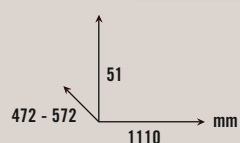
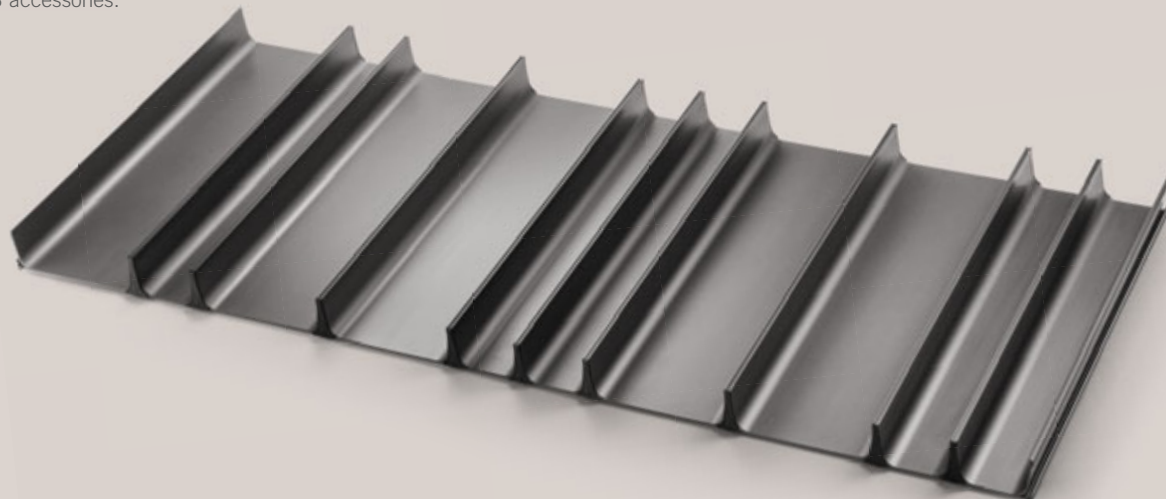
PROFONDITÀ 60  
DEPTH 60

31107734

PROFONDITÀ 70  
DEPTH 70

**PORTAPOSATE SURF TIPO L2 PER CASSETTO L. 120**  
**SURF CUTLERY TRAY FOR DRAWER W. 120 TYPE L2**

Struttura in alluminio verniciato peltrox.  
N.5 moduli per accessori tipo A.  
N.5 moduli per accessori tipo B.  
Peltrox coated aluminium structure.  
5 modules for type A accessories.  
5 module for type B accessories.



31107728

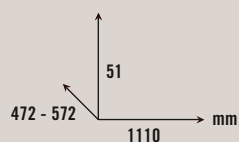
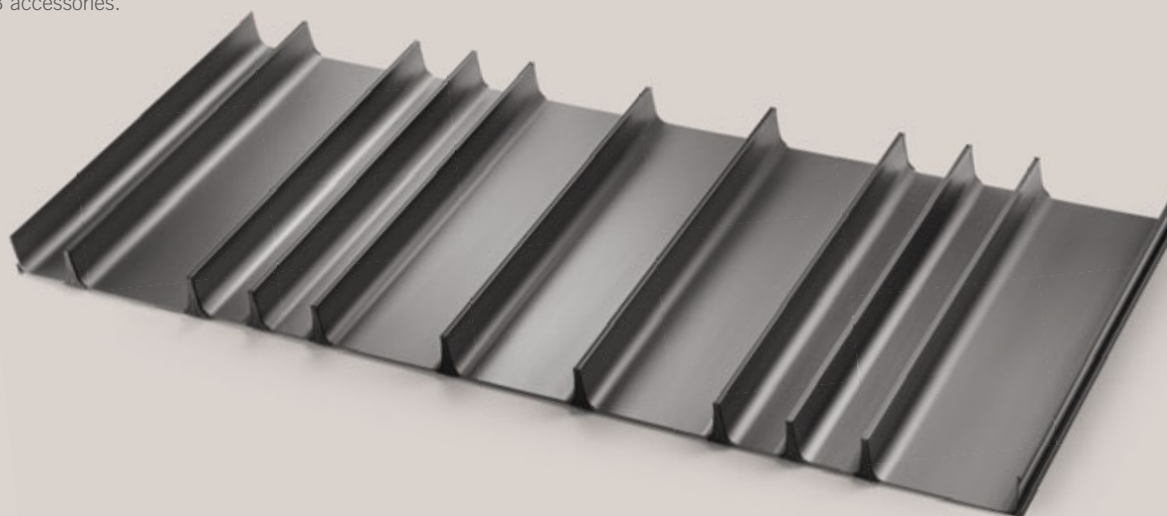
PROFONDITÀ 60  
DEPTH 60

31107735

PROFONDITÀ 70  
DEPTH 70

**PORTAPOSATE SURF TIPO L3 PER CASSETTO L. 120**  
**SURF CUTLERY TRAY FOR DRAWER W. 120 TYPE L3**

Struttura in alluminio verniciato peltrox.  
N.5 moduli per accessori tipo A.  
N.5 moduli per accessori tipo B.  
Peltrox coated aluminium structure.  
5 modules for type A accessories.  
5 module for type B accessories.



31107729

PROFONDITÀ 60  
DEPTH 60

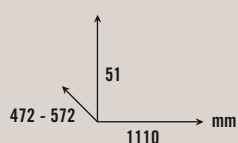
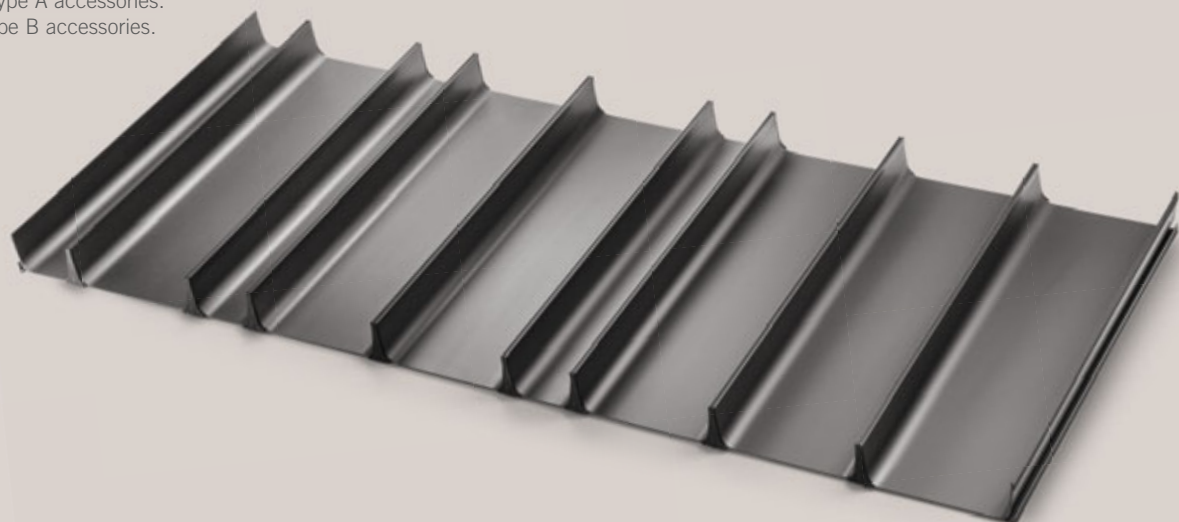
31107736

PROFONDITÀ 70  
DEPTH 70



**PORTAPOSATE SURF TIPO M1 PER CASSETTO L. 120**  
**SURF CUTLERY TRAY FOR DRAWER W. 120 TYPE M1**

Struttura in alluminio verniciato peltrox.  
N.3 moduli per accessori tipo A.  
N.6 moduli per accessori tipo B.  
Peltrox coated aluminium structure.  
3 modules for type A accessories.  
6 module for type B accessories.



31107730

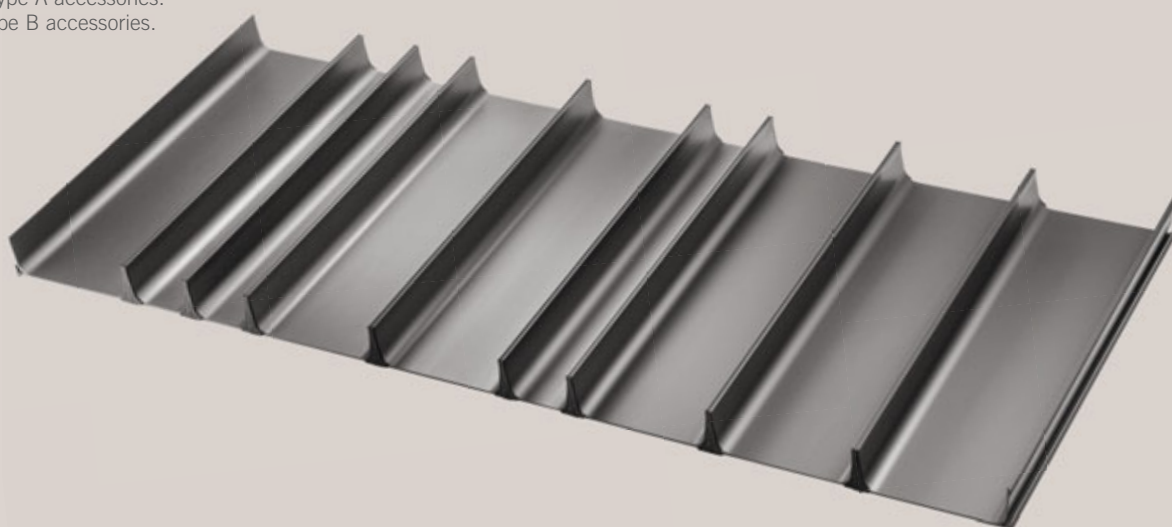
PROFONDITÀ 60  
DEPTH 60

31107737

PROFONDITÀ 70  
DEPTH 70

**PORTAPOSATE SURF TIPO M2 PER CASSETTO L. 120**  
**SURF CUTLERY TRAY FOR DRAWER W. 120 TYPE M2**

Struttura in alluminio verniciato peltrox.  
N.3 moduli per accessori tipo A.  
N.6 moduli per accessori tipo B.  
Peltrox coated aluminium structure.  
3 modules for type A accessories.  
6 module for type B accessories.



31107731

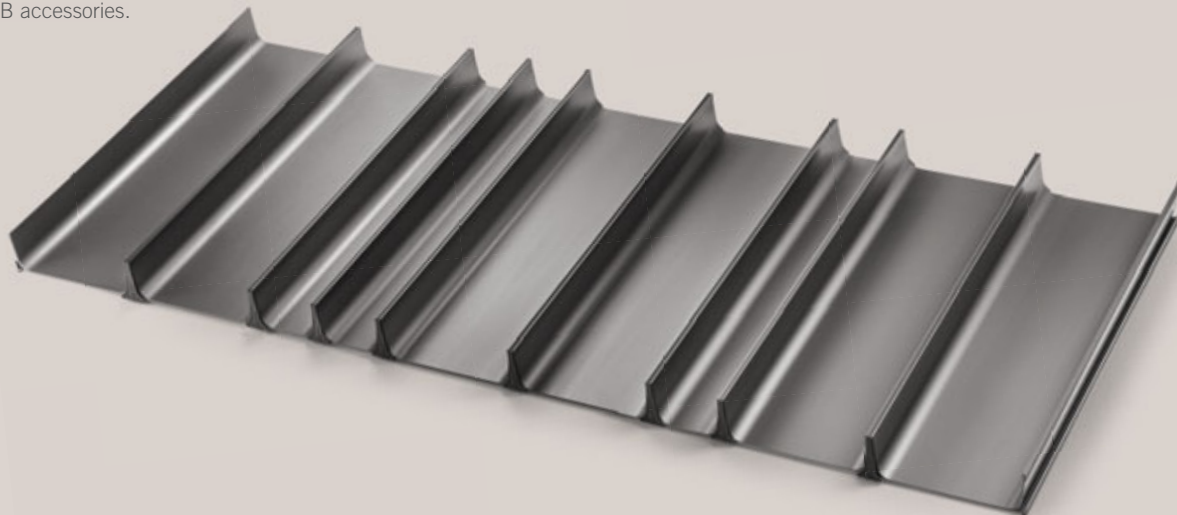
PROFONDITÀ 60  
DEPTH 60

31107738

PROFONDITÀ 70  
DEPTH 70

**PORTAPOSATE SURF TIPO M3 PER CASSETTO L. 120**  
**SURF CUTLERY TRAY FOR DRAWER W. 120 TYPE M3**

Struttura in alluminio verniciato peltrox.  
N.3 moduli per accessori tipo A.  
N.6 moduli per accessori tipo B.  
Peltrox coated aluminium structure.  
3 modules for type A accessories.  
6 module for type B accessories.



31107732

PROFONDITÀ 60  
DEPTH 60

31107739

PROFONDITÀ 70  
DEPTH 70

**SPALLETTA DIVISORIO PICCOLA SURF TIPO A**  
SURF SMALL PARTITION TYPE A

Struttura in legno massello.  
Frame in solid wood.



31107698

ROVERE NORDIC SMOOTH ZERO GLOSS™  
SMOOTH ZERO GLOSS™ NORDIC OAK

31107698

ROVERE TERMOTRATTATO SMOOTH ZERO GLOSS™  
SMOOTH ZERO GLOSS™ HEAT-TREATED OAK

**SPALLETTA DIVISORIO GRANDE SURF TIPO B**  
SURF LARGE PARTITION TYPE B

Struttura in legno massello.  
Frame in solid wood.



31107699

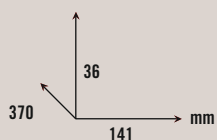
ROVERE NORDIC SMOOTH ZERO GLOSS™  
SMOOTH ZERO GLOSS™ NORDIC OAK

31107699

ROVERE TERMOTRATTATO SMOOTH ZERO GLOSS™  
SMOOTH ZERO GLOSS™ HEAT-TREATED OAK

**PORTASPEZIE SURF TIPO B**  
**SURF SPICE RACK TYPE B**

Struttura in legno massello.  
Frame in solid wood.



31107692

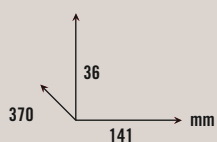
ROVERE NORDIC SMOOTH ZERO GLOSS™  
SMOOTH ZERO GLOSS™ NORDIC OAK

31107692

ROVERE TERMOTRATTATO SMOOTH ZERO GLOSS™  
SMOOTH ZERO GLOSS™ HEAT-TREATED OAK

**PORTACIALDE SURF TIPO B**  
**SURF CAPSULE RACK TYPE B**

Struttura in legno massello.  
Frame in solid wood.



31107697

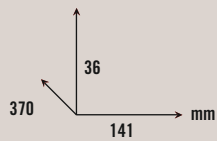
ROVERE NORDIC SMOOTH ZERO GLOSS™  
SMOOTH ZERO GLOSS™ NORDIC OAK

31107697

ROVERE TERMOTRATTATO SMOOTH ZERO GLOSS™  
SMOOTH ZERO GLOSS™ HEAT-TREATED OAK

**PORTACOLTELLI SURF TIPO B**  
SURF KNIFE RACK TYPE B

Struttura in legno massello.  
Frame in solid wood.



31107695

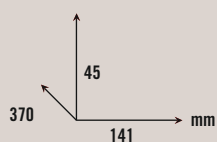
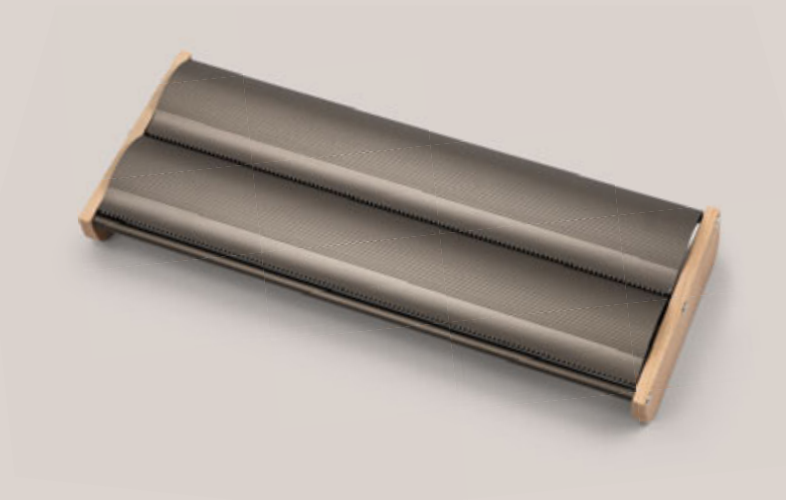
ROVERE NORDIC SMOOTH ZERO GLOSS™  
SMOOTH ZERO GLOSS™ NORDIC OAK

31107695

ROVERE TERMOTRATTATO SMOOTH ZERO GLOSS™  
SMOOTH ZERO GLOSS™ HEAT-TREATED OAK

**PORTAPELLICOLE SURF TIPO B**  
SURF KITCHEN FILM HOLDER TYPE B

Struttura in legno massello e alluminio.  
Solid wood and aluminium frame.



31107696

ROVERE NORDIC SMOOTH ZERO GLOSS™  
SMOOTH ZERO GLOSS™ NORDIC OAK

31107696

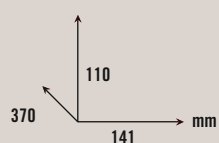
ROVERE TERMOTRATTATO SMOOTH ZERO GLOSS™  
SMOOTH ZERO GLOSS™ HEAT-TREATED OAK

**PORTABARATTOLI SURF TIPO B**  
**SURF JAR RACK TYPE B**

Struttura in legno massello.  
N.2 barattoli in vetro con tappi alluminio.  
Frame in solid wood.  
2 glass jars with aluminium caps.



N.B. Accessori disponibili solo per cassetti Legrabox  
con altezza interna utile di minimo 12 cm.  
N.B. Accessories only available for Legrabox drawers  
with usable internal depth of at least 12 cm.



31107693

ROVERE NORDIC SMOOTH ZERO GLOSS™  
SMOOTH ZERO GLOSS™ NORDIC OAK

31107693

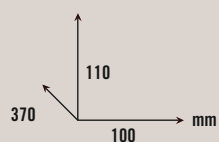
ROVERE TERMOTRATTATO SMOOTH ZERO GLOSS™  
SMOOTH ZERO GLOSS™ HEAT-TREATED OAK

**PORTA SPARGI SALE E PEPE SURF TIPO B**  
**SURF RACK FOR SALT AND PEPPER SPRINKLERS TYPE B**

Struttura in legno massello.  
N.8 barattoli in vetro con tappi alluminio.  
Frame in solid wood.  
8 glass jars with aluminium caps.



N.B. Accessori disponibili solo per cassetti Legrabox  
con altezza interna utile di minimo 12 cm.  
N.B. Accessories only available for Legrabox drawers  
with usable internal depth of at least 12 cm.



31107694

ROVERE NORDIC SMOOTH ZERO GLOSS™  
SMOOTH ZERO GLOSS™ NORDIC OAK

31107694

ROVERE TERMOTRATTATO SMOOTH ZERO GLOSS™  
SMOOTH ZERO GLOSS™ HEAT-TREATED OAK



ACCESSORI PER CASSETTI / DRAWER ACCESSORIES

# **SURF** PER SPONDE K-SYSTEM FOR K-SYSTEM SIDES

alluminio verniciato peltrox e rovere  
*Peltrox coated aluminium and oak*

**ernestomeda**





# “SURF”

*ESEMPI DI COMPOSIZIONI PER CASSETTI CON SPONDE K-SYSTEM \_ accessori interni da ordinare a parte*  
*COMPOSITION EXAMPLES FOR DRAWERS WITH K-SYSTEM SIDES \_ internal accessories to be ordered separately*

ernestomeda

**PORTAPOSATE SURF PER CASSETTO L.60CM PROF. 60 TIPO U**  
**SURF CUTLERY TRAY FOR DRAWER W.60CM DEPTH 60 TYPE U**



**PORTAPOSATE SURF PER CASSETTO L.90CM PROF. 60 TIPO Q**  
**SURF CUTLERY TRAY FOR DRAWER W.90CM DEPTH 60 TYPE Q**



# “SURF”

*ESEMPI DI COMPOSIZIONI PER CASSETTI CON SPONDE K-SYSTEM \_ accessori interni da ordinare a parte*  
*COMPOSITION EXAMPLES FOR DRAWERS WITH K-SYSTEM SIDES \_ internal accessories to be ordered separately*

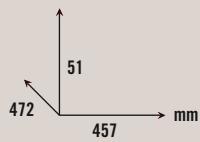
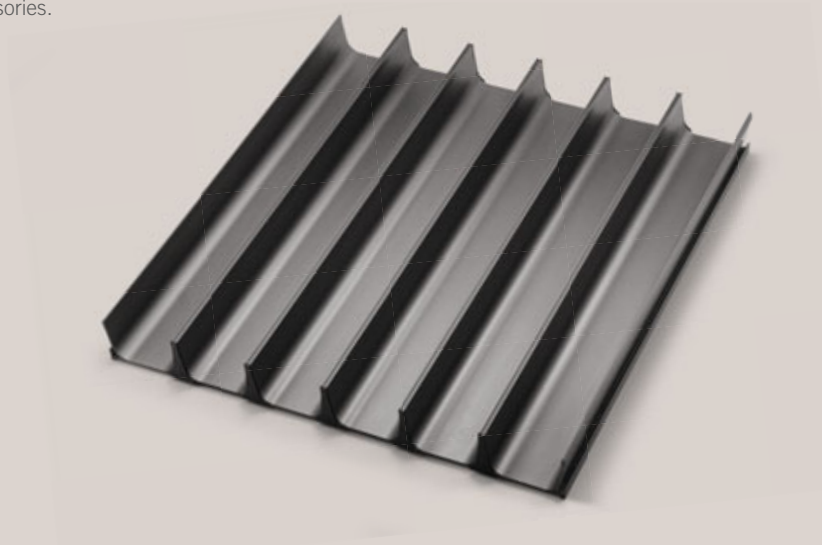
ernestomeda

**PORTAPOSATE SURF PER CASSETTO L.120CM PROF. 60 TIPO S1**  
**SURF CUTLERY TRAY FOR DRAWER W.120CM DEPTH 60 TYPE S1**



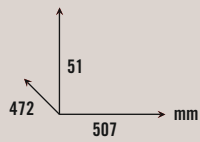
**PORTAPOSATE SURF TIPO N PER CASSETTO L. 60**  
**SURF CUTLERY TRAY TYPE N FOR DRAWER W. 60**

Struttura in alluminio verniciato peltrox.  
N.6 moduli per accessori tipo A.  
Peltrox coated aluminium structure.  
6 modules for type A accessories.



31107740

SINGOLO PROFONDITÀ 60  
SINGLE DEPTH 60



31107746

CENTRALE PROFONDITÀ 60  
MIDDLE POS. DEPTH 60

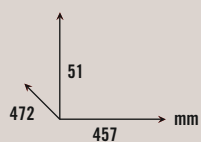
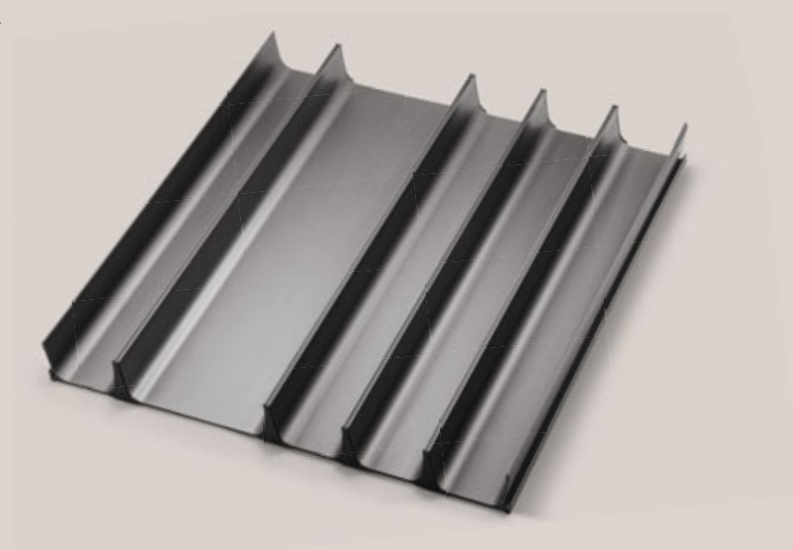


31107743

LATERALE PROFONDITÀ 60  
SIDE POS. DEPTH 60

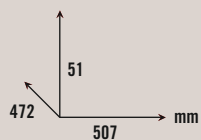
**PORTAPOSATE SURF TIPO 0 PER CASSETTO L. 60**  
**SURF CUTLERY TRAY TYPE 0 FOR DRAWER W. 60**

Struttura in alluminio verniciato peltrox.  
N.4 moduli per accessori tipo A.  
N.1 modulo per accessori tipo B.  
Peltrox coated aluminium structure.  
4 modules for type A accessories.  
1 module for type B accessories.



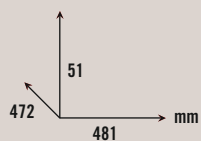
31107741

SINGOLO PROFONDITÀ 60  
SINGLE DEPTH 60



31107747

CENTRALE PROFONDITÀ 60  
MIDDLE POS. DEPTH 60

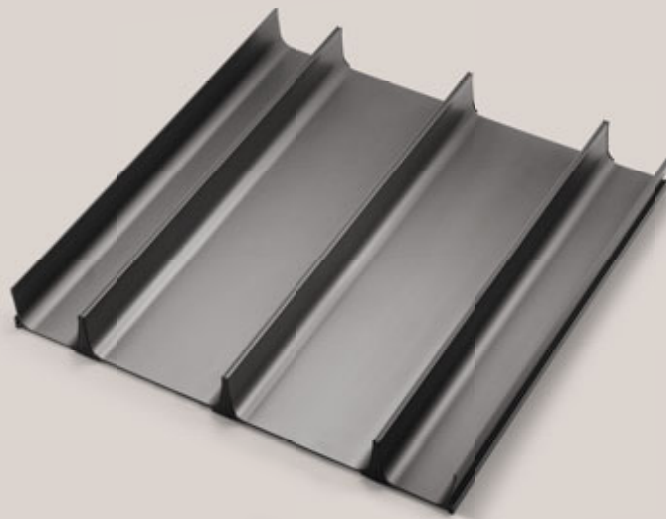


31107744

LATERALE PROFONDITÀ 60  
SIDE POS. DEPTH 60

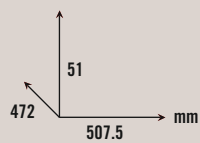
**PORTAPOSATE SURF TIPO P PER CASSETTO L. 60**  
**SURF CUTLERY TRAY TYPE P FOR DRAWER W. 60**

Struttura in alluminio verniciato peltrox.  
N.2 moduli per accessori tipo A.  
N.2 moduli per accessori tipo B.  
Peltrox coated aluminium structure.  
2 modules for type A accessories.  
2 module for type B accessories.



31107742

SINGOLO PROFONDITÀ 60  
SINGLE DEPTH 60



31107748

CENTRALE PROFONDITÀ 60  
MIDDLE POS. DEPTH 60

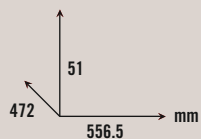
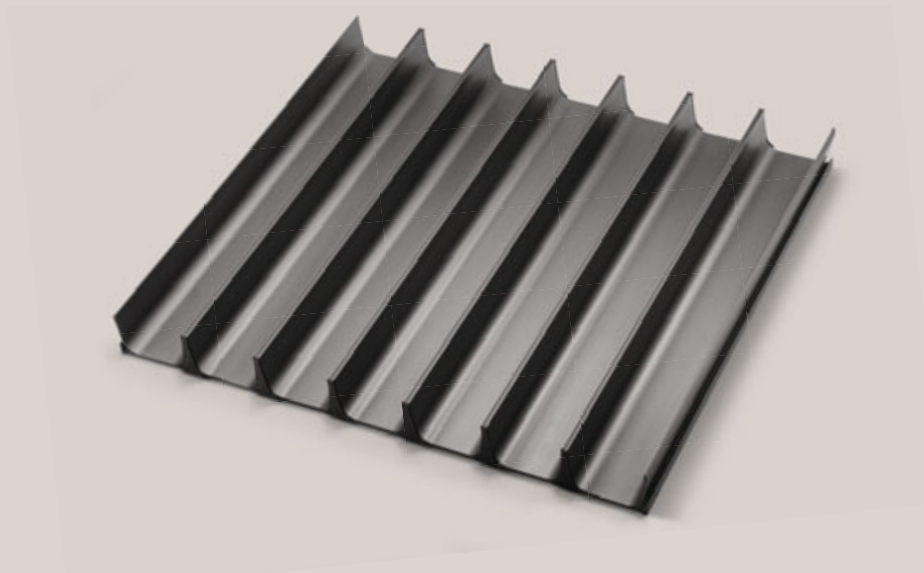


31107745

LATERALE PROFONDITÀ 60  
SIDE POS. DEPTH 60

**PORTAPOSATE SURF TIPO T PER CASSETTO L. 70**  
**SURF CUTLERY TRAY TYPE T FOR DRAWER W. 70**

Struttura in alluminio verniciato peltrox.  
N.7 moduli per accessori tipo A.  
Peltrox coated aluminium structure.  
7 modules for type A accessories.

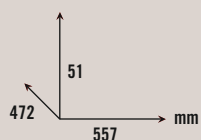
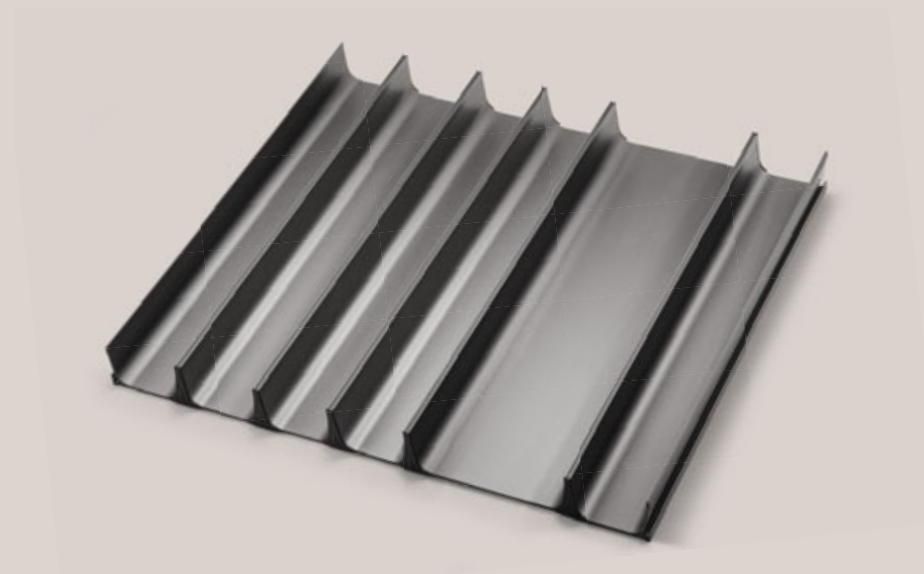


31107749

SINGOLO PROFONDITÀ 60  
SINGLE DEPTH 60

**PORTAPOSATE SURF TIPO U PER CASSETTO L. 70**  
**SURF CUTLERY TRAY TYPE U FOR DRAWER W. 70**

Struttura in alluminio verniciato peltrox.  
N.5 moduli per accessori tipo A.  
N.1 modulo per accessori tipo B.  
Peltrox coated aluminium structure.  
5 modules for type A accessories.  
1 module for type B accessories.

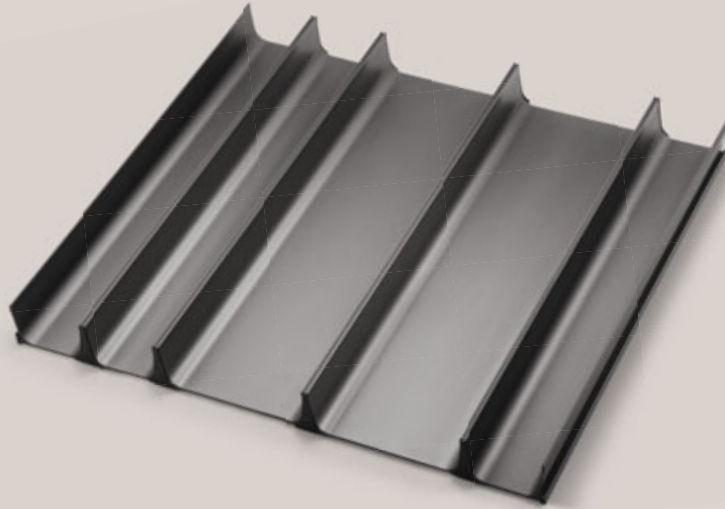


31107750

SINGOLO PROFONDITÀ 60  
SINGLE DEPTH 60

**PORTAPOSATE SURF TIPO V PER CASSETTO L. 70**  
**SURF CUTLERY TRAY TYPE V FOR DRAWER W. 70**

Struttura in alluminio verniciato peltrox.  
N.3 moduli per accessori tipo A.  
N.2 moduli per accessori tipo B.  
Peltrox coated aluminium structure.  
3 modules for type A accessories.  
2 module for type B accessories.

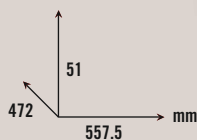
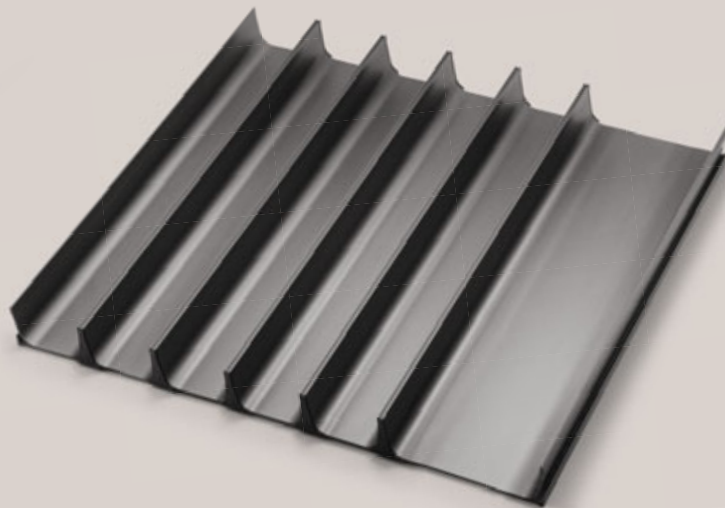


31107751

SINGOLO PROFONDITÀ 60  
SINGLE DEPTH 60

**PORTAPOSATE SURF TIPO W PER CASSETTO L. 70**  
**SURF CUTLERY TRAY TYPE W FOR DRAWER W. 70**

Struttura in alluminio verniciato peltrox.  
N.1 modulo per accessori tipo A.  
N.3 moduli per accessori tipo B.  
Peltrox coated aluminium structure.  
1 modules for type A accessories.  
3 module for type B accessories.

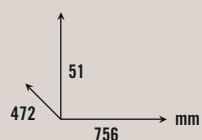
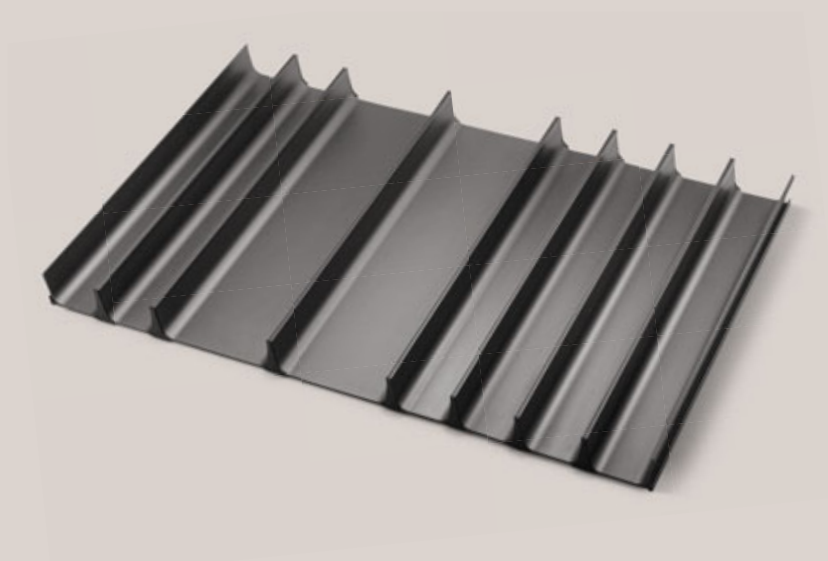


31107752

SINGOLO PROFONDITÀ 60  
SINGLE DEPTH 60

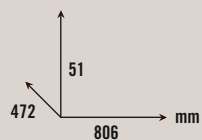
**PORTAPOSATE SURF TIPO Q PER CASSETTO L.90**  
**SURF CUTLERY TRAY TYPE Q FOR DRAWER W. 90**

Struttura in alluminio verniciato peltrox  
N.6 moduli per accessori tipo A.  
N.2 moduli per accessori tipo B.  
Peltrox coated aluminium structure.  
6 modules for type A accessories.  
2 module for type B accessories.



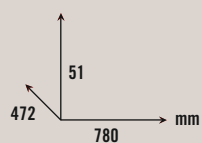
31107753

*SINGOLO PROFONDITÀ 60*  
*SINGLE DEPTH 60*



31107759

*CENTRALE PROFONDITÀ 60*  
*MIDDLE POS. DEPTH 60*



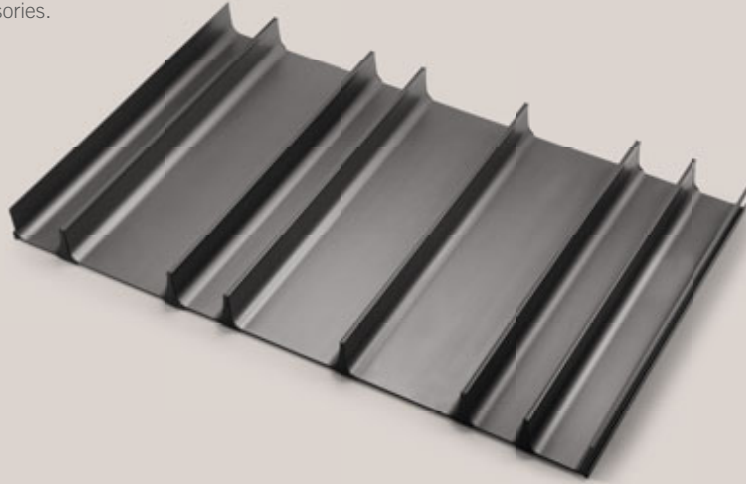
31107756

*LATERALE PROFONDITÀ 60*  
*SIDE POS. DEPTH 60*



**PORTAPOSATE SURF TIPO R1 PER CASSETTO L. 90**  
**SURF CUTLERY TRAY TYPE R1 FOR DRAWER W. 90**

Struttura in alluminio verniciato peltrox.  
N.4 moduli per accessori tipo A.  
N.3 moduli per accessori tipo B.  
Peltrox coated aluminium structure.  
4 modules for type A accessories.  
3 module for type B accessories.



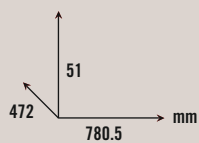
**31107754**

*SINGOLO PROFONDITÀ 60*  
*SINGLE DEPTH 60*



**31107760**

*CENTRALE PROFONDITÀ 60*  
*MIDDLE POS. DEPTH 60*

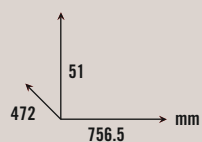
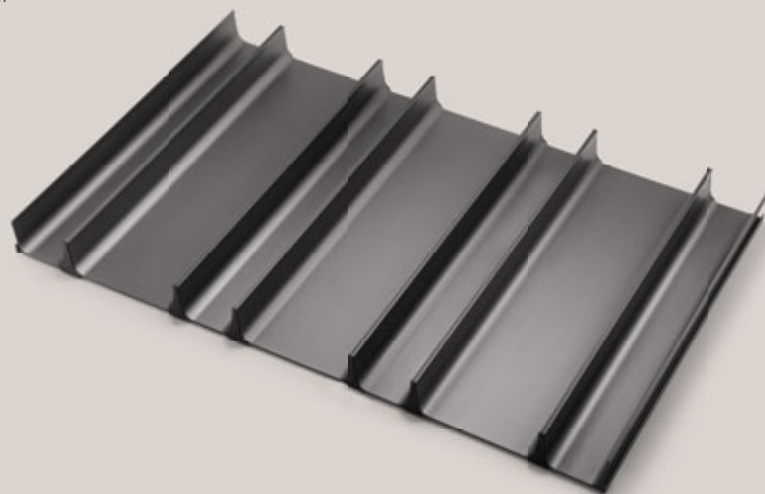


**31107757**

*LATERALE PROFONDITÀ 60*  
*SIDE POS. DEPTH 60*

**PORTAPOSATE SURF TIPO R2 PER CASSETTO L. 90**  
**SURF CUTLERY TRAY TYPE R2 FOR DRAWER W. 90**

Struttura in alluminio verniciato peltrox.  
N.4 moduli per accessori tipo A.  
N.3 moduli per accessori tipo B.  
Peltrox coated aluminium structure.  
4 modules for type A accessories.  
3 module for type B accessories.



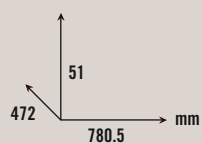
31107755

SINGOLO PROFONDITÀ 60  
SINGLE DEPTH 60



31107761

CENTRALE PROFONDITÀ 60  
MIDDLE POS. DEPTH 60

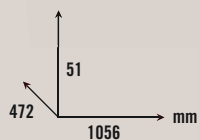
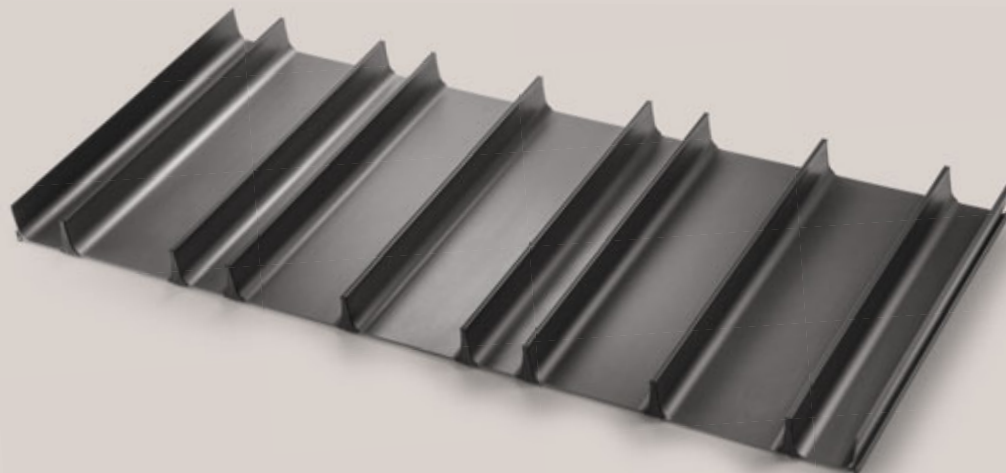


31107758

LATERALE PROFONDITÀ 60  
SIDE POS. DEPTH 60

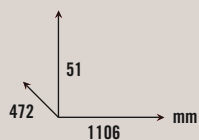
**PORTAPOSATE SURF TIPO S1 PER CASSETTO L. 120**  
**SURF CUTLERY TRAY TYPE S1 FOR DRAWER W. 120**

Struttura in alluminio verniciato peltrox.  
N.4 moduli per accessori tipo A.  
N.5 moduli per accessori tipo B.  
Peltrox coated aluminium structure.  
4 modules for type A accessories.  
5 module for type B accessories.



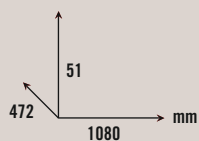
31107762

*SINGOLO PROFONDITÀ 60*  
*SINGLE DEPTH 60*



31107768

*CENTRALE PROFONDITÀ 60*  
*MIDDLE POS. DEPTH 60*

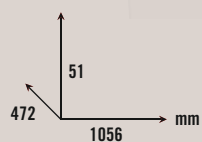
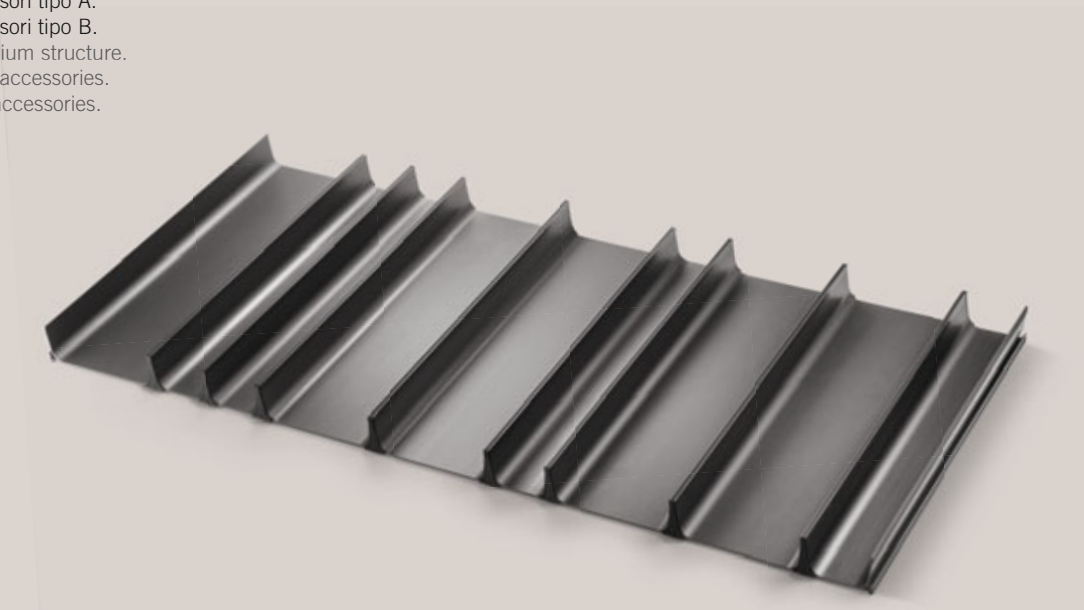


31107765

*LATERALE PROFONDITÀ 60*  
*SIDE POS. DEPTH 60*

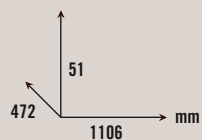
**PORTAPOSATE SURF TIPO S2 PER CASSETTO L. 120**  
**SURF CUTLERY TRAY TYPE S2 FOR DRAWER W. 120**

Struttura in alluminio verniciato peltrox.  
N.4 moduli per accessori tipo A.  
N.5 moduli per accessori tipo B.  
Peltrox coated aluminium structure.  
4 modules for type A accessories.  
5 module for type B accessories.



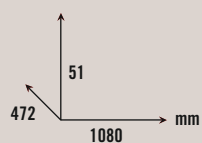
31107763

*SINGOLO PROFONDITÀ 60*  
*SINGLE DEPTH 60*



31107769

*CENTRALE PROFONDITÀ 60*  
*MIDDLE POS. DEPTH 60*

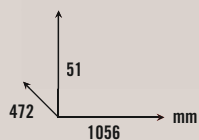
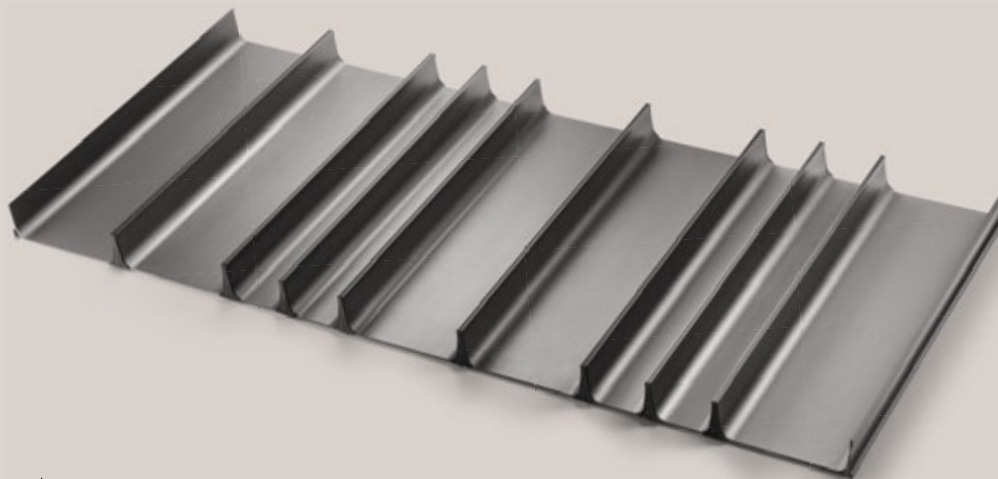


31107766

*LATERALE PROFONDITÀ 60*  
*SIDE POS. DEPTH 60*

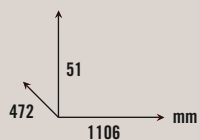
**PORTAPOSATE SURF TIPO S3 PER CASSETTO L. 120**  
**SURF CUTLERY TRAY TYPE S3 FOR DRAWER W. 120**

Struttura in alluminio verniciato peltrox.  
N.4 moduli per accessori tipo A.  
N.5 moduli per accessori tipo B.  
Peltrox coated aluminium structure.  
4 modules for type A accessories.  
5 module for type B accessories.



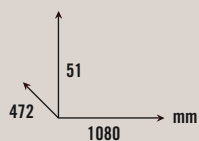
**31107764**

*SINGOLO PROFONDITÀ 60*  
*SINGLE DEPTH 60*



**31107770**

*CENTRALE PROFONDITÀ 60*  
*MIDDLE POS. DEPTH 60*



**31107767**

*LATERALE PROFONDITÀ 60*  
*SIDE POS. DEPTH 60*

# “SURF” PER SPONDE K-SYSTEM

ACCESSORI PER CASSETTI / DRAWER ACCESSORIES

CODICE / CODE

FINITURE / FINISHES

ernestomeda

## SPALLETTA DIVISORIO PICCOLA SURF TIPO A SURF SMALL PARTITION TYPE A

Struttura in legno massello  
Frame in solid wood



31107698

ROVERE NORDIC SMOOTH ZERO GLOSS™  
SMOOTH ZERO GLOSS™ NORDIC OAK

31107698

ROVERE TERMOTRATTATO SMOOTH ZERO GLOSS™  
SMOOTH ZERO GLOSS™ HEAT-TREATED OAK

## SPALLETTA DIVISORIO GRANDE SURF TIPO B SURF LARGE PARTITION TYPE B

Struttura in legno massello  
Frame in solid wood



31107699

ROVERE NORDIC SMOOTH ZERO GLOSS™  
SMOOTH ZERO GLOSS™ NORDIC OAK

31107699

ROVERE TERMOTRATTATO SMOOTH ZERO GLOSS™  
SMOOTH ZERO GLOSS™ HEAT-TREATED OAK

## PORTASPEZIE SURF TIPO B SURF SPICE RACK TYPE B

Struttura in legno massello  
Frame in solid wood



31107692

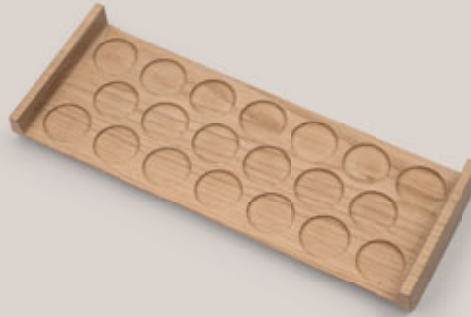
ROVERE NORDIC SMOOTH ZERO GLOSS™  
SMOOTH ZERO GLOSS™ NORDIC OAK

31107692

ROVERE TERMOTRATTATO SMOOTH ZERO GLOSS™  
SMOOTH ZERO GLOSS™ HEAT-TREATED OAK

**PORTACIALDE SURF TIPO B**  
**SURF CAPSULE RACK TYPE B**

Struttura in legno massello  
Frame in solid wood



31107697

*ROVERE NORDIC SMOOTH ZERO GLOSS™*  
*SMOOTH ZERO GLOSS™ NORDIC OAK*

31107697

*ROVERE TERMOTRATTATO SMOOTH ZERO GLOSS*  
*SMOOTH ZERO GLOSS™ HEAT-TREATED OAK*

**PORTACOLTELLI SURF TIPO B**  
**SURF KNIFE RACK TYPE B**

Struttura in legno massello  
Frame in solid wood



31107695

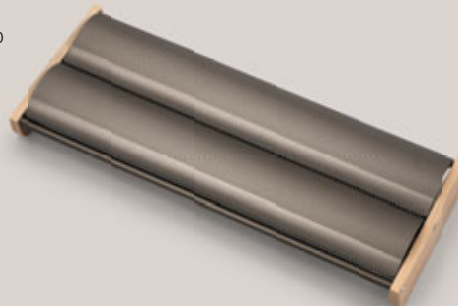
*ROVERE NORDIC SMOOTH ZERO GLOSS™*  
*SMOOTH ZERO GLOSS™ NORDIC OAK*

31107695

*ROVERE TERMOTRATTATO SMOOTH ZERO GLOSS*  
*SMOOTH ZERO GLOSS™ HEAT-TREATED OAK*

**PORTAPELLICOLE SURF TIPO B**  
**SURF KITCHEN FILM HOLDER TYPE B**

Struttura in legno massello e alluminio  
Solid wood and aluminium frame



31107696

*ROVERE NORDIC SMOOTH ZERO GLOSS™*  
*SMOOTH ZERO GLOSS™ NORDIC OAK*

31107696

*ROVERE TERMOTRATTATO SMOOTH ZERO GLOSS*  
*SMOOTH ZERO GLOSS™ HEAT-TREATED OAK*





ACCESSORI PER CASSETTI E CESTELLI LEGRABOX  
DRAWER AND BASKET ACCESSORIES LEGRABOX

# COMBILINE

rovere dark e alluminio  
*dark oak & aluminium*

ernestomeda

ACCESSORI PER CASSETTI E CESTELLI LEGRABOX  
DRAWER AND BASKET ACCESSORIES LEGRABOX

# COMBILINE

rovere dark *dark oak*

ernestomeda

ACCESSORI PER CASSETTI E CESTELLI LEGRABOX  
DRAWER AND BASKET ACCESSORIES LEGRABOX

**COMBILINE**

rovere soft *soft oak*

**ernestomeda**



COMBILINE

ernestomeda

# “COMBILINE”

DISPONIBILE SOLO PER CASSETTI E CESTELLI  
CON SISTEMA DI GUIDE E SPONDE LEGRABOX /  
ONLY AVAILABLE FOR DRAWERS AND BASKETS  
WITH LEGRABOX RUNNER AND SIDE SYSTEM

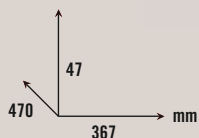
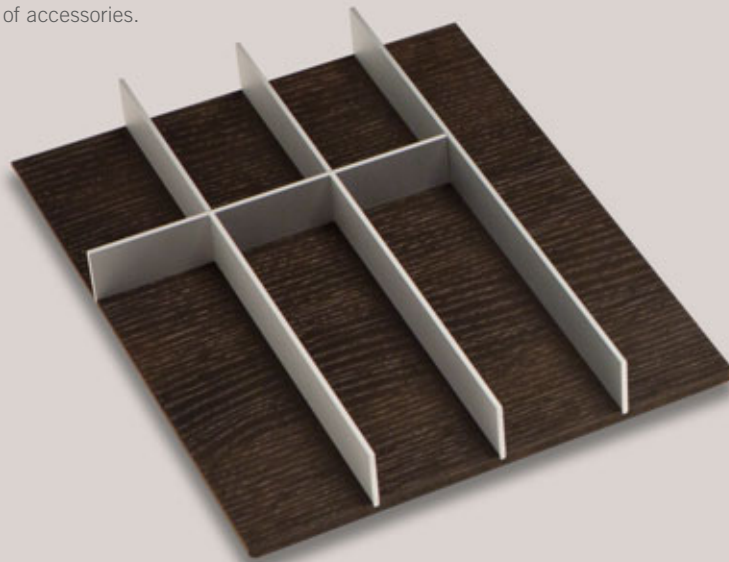
CODICE / CODE

FINITURE / FINISHES

ernestomeda

## PORTAPOSATE CUTLERY TRAY

Portaposate per cassetto da 45 cm.  
Non attrezzabile con nessun tipo di accessorio.  
45-cm drawer accessory.  
Cannot be equipped with any type of accessories.

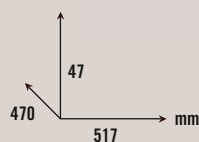
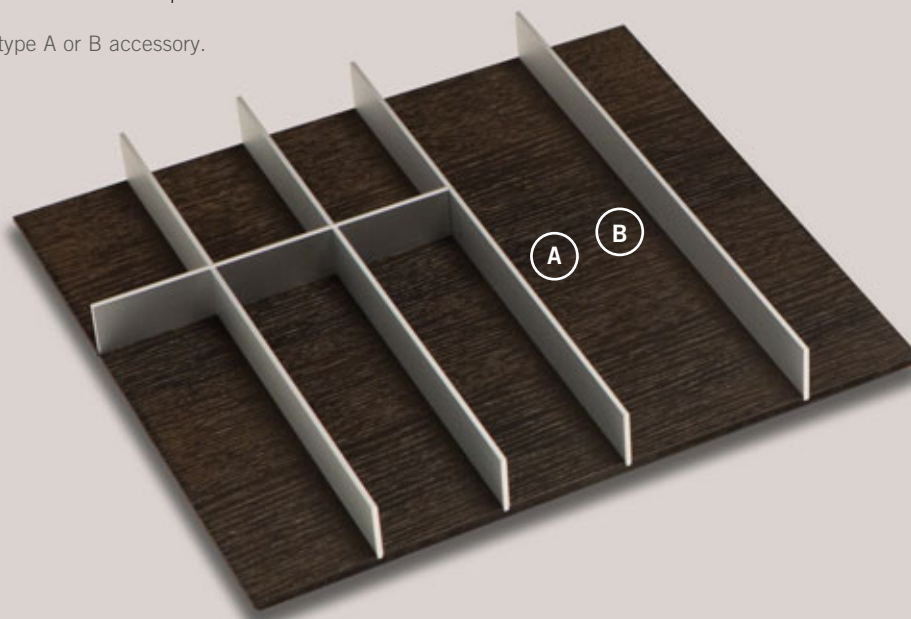


31106312

ROVERE DARK E ALLUMINIO  
DARK OAK AND ALUMINIUM

## PORTAPOSATE CUTLERY TRAY

Portaposate per cassetto da 60 cm.  
Possibilità di attrezzare n. 1 accessorio di tipo A o B.  
60-cm drawer accessory.  
Can be equipped with 1 type A or B accessory.



31106313

ROVERE DARK E ALLUMINIO  
DARK OAK AND ALUMINIUM

# "COMBILINE"

DISPONIBILE SOLO PER CASSETTI E GESTELLI  
CON SISTEMA DI GUIDE E SPONDE LEGRABOX /  
ONLY AVAILABLE FOR DRAWERS AND BASKETS  
WITH LEGRABOX RUNNER AND SIDE SYSTEM

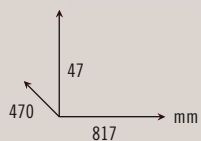
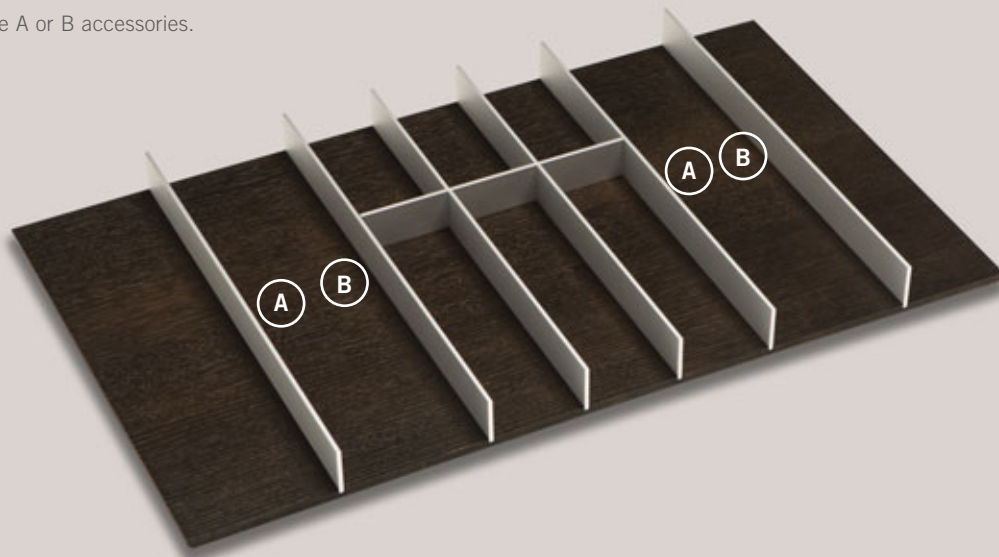
CODICE / CODE

FINITURE / FINISHES

ernestomeda

## PORTAPOSATE CUTLERY TRAY

Portaposate per cassetto da 90 cm.  
Possibilità di attrezzare n.2 accessori di tipo A o B.  
90-cm drawer accessory.  
Can be equipped with 2 type A or B accessories.

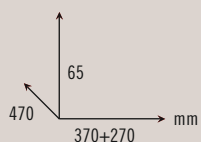
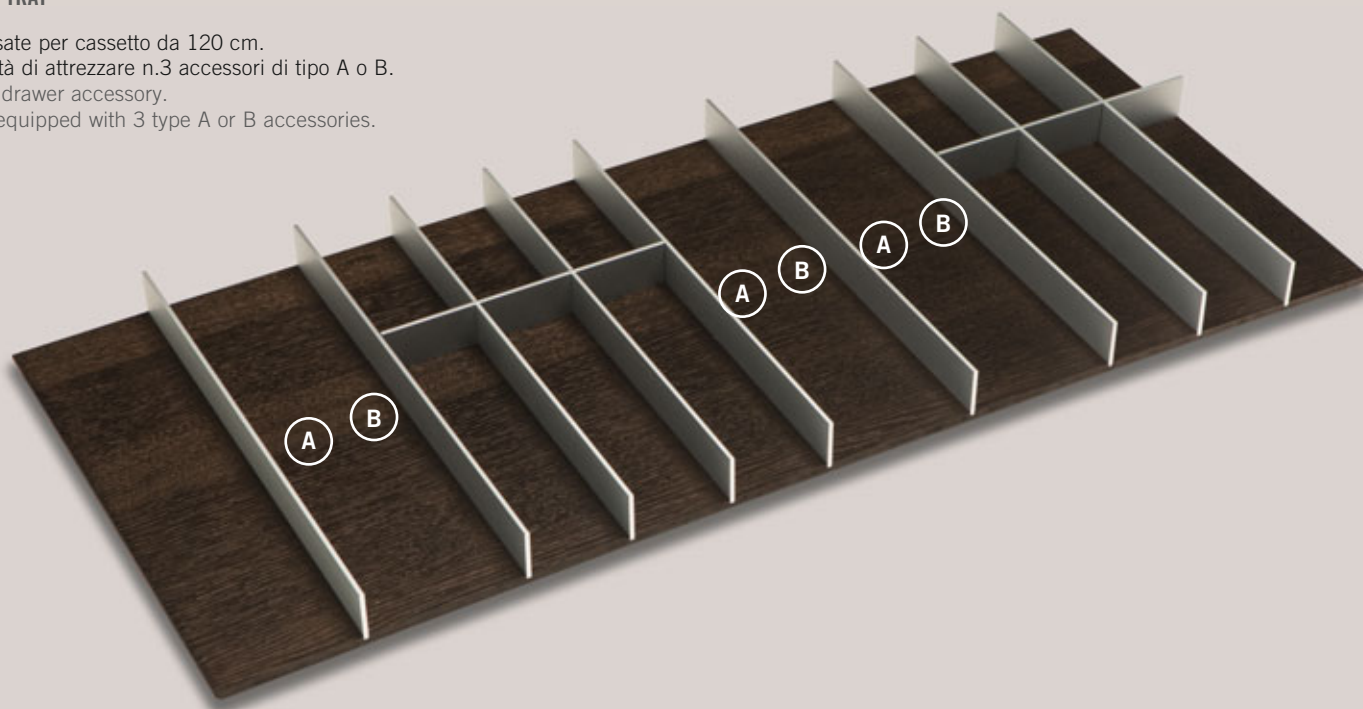


31106314

ROVERE DARK E ALLUMINIO  
DARK OAK AND ALUMINIUM

## PORTAPOSATE CUTLERY TRAY

Portaposate per cassetto da 120 cm.  
Possibilità di attrezzare n.3 accessori di tipo A o B.  
120-cm drawer accessory.  
Can be equipped with 3 type A or B accessories.



31106315

ROVERE DARK E ALLUMINIO  
DARK OAK AND ALUMINIUM

# “COMBILINE”

DISPONIBILE SOLO PER CASSETTI E CESTELLI  
CON SISTEMA DI GUIDE E SPONDE LEGRABOX /  
ONLY AVAILABLE FOR DRAWERS AND BASKETS  
WITH LEGRABOX RUNNER AND SIDE SYSTEM

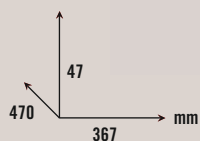
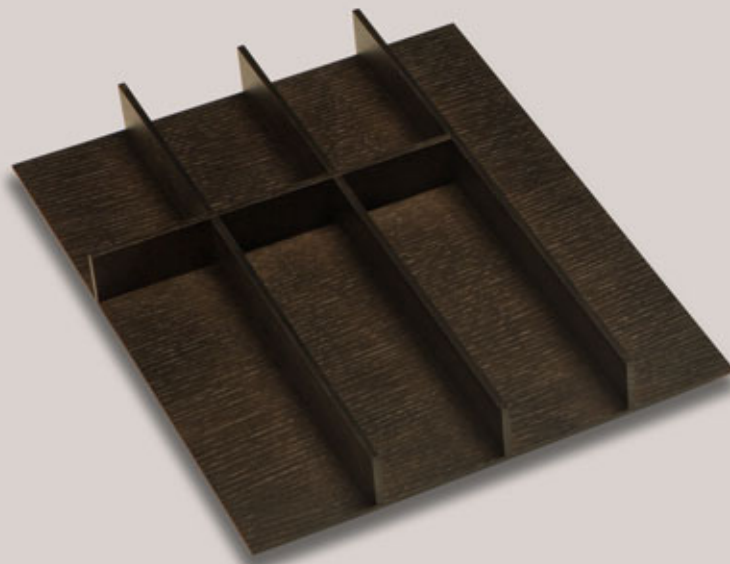
CODICE / CODE

FINITURE / FINISHES

ernestomeda

## PORTAPOSATE CUTLERY TRAY

Portaposate per cassetto da 45 cm.  
Non attrezzabile con nessun tipo di accessorio.  
45-cm drawer accessory.  
Cannot be equipped with any type of accessories.

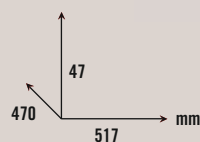
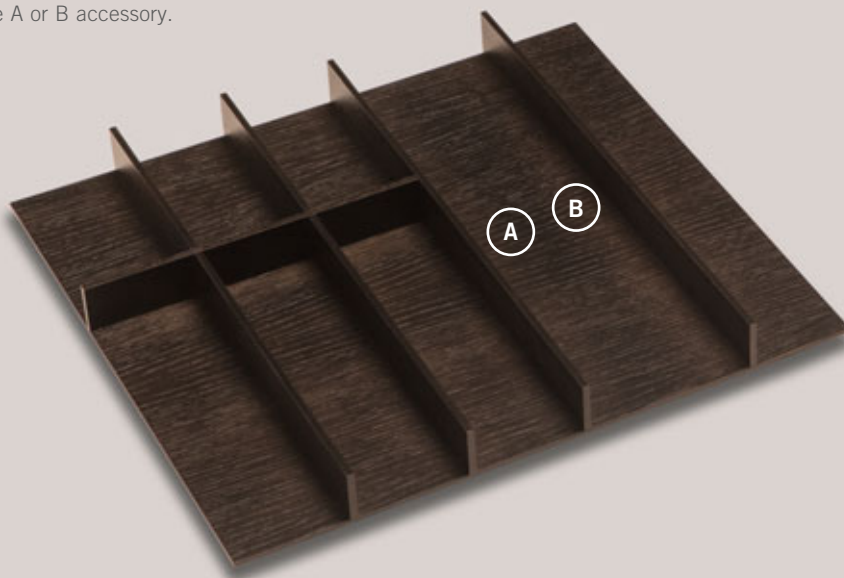


31106426

ROVERE DARK  
DARK OAK

## PORTAPOSATE CUTLERY TRAY

Portaposate per cassetto da 60 cm.  
Possibilità di attrezzare n. 1 accessorio di tipo A o B.  
60-cm drawer accessory.  
Can be equipped with 1 type A or B accessory.



31106427

ROVERE DARK  
DARK OAK

# “COMBILINE”

DISPONIBILE SOLO PER CASSETTI E GESTELLI  
CON SISTEMA DI GUIDE E SPONDE LEGRABOX /  
ONLY AVAILABLE FOR DRAWERS AND BASKETS  
WITH LEGRABOX RUNNER AND SIDE SYSTEM

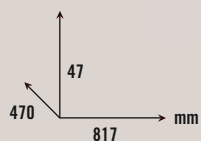
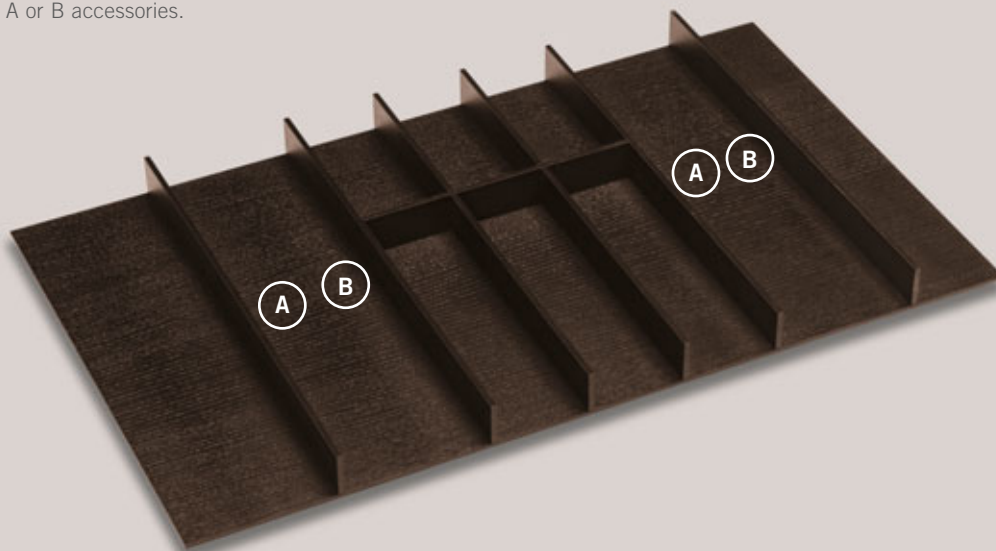
CODICE / CODE

FINITURE / FINISHES

ernestomeda

## PORTAPOSATE CUTLERY TRAY

Portaposate per cassetto da 90 cm.  
Possibilità di attrezzare n.2 accessori di tipo A o B.  
90-cm drawer accessory.  
Can be equipped with 2 type A or B accessories.

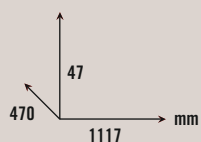
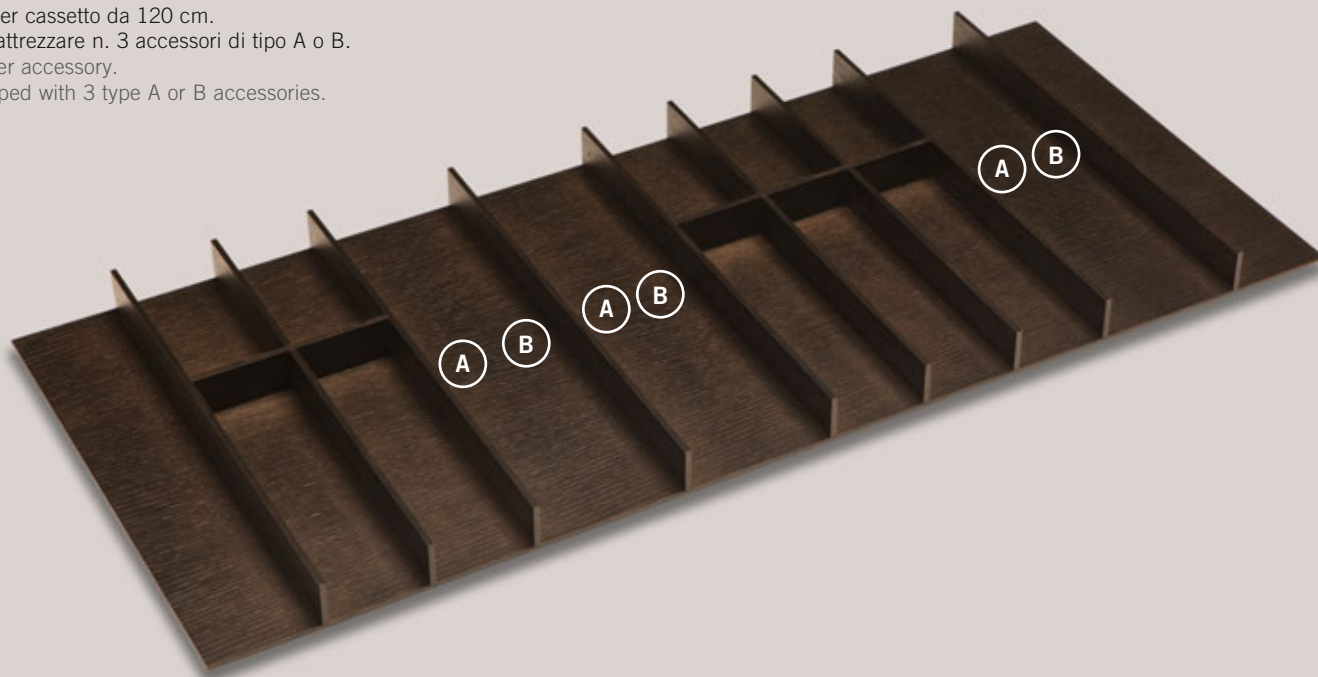


31106428

ROVERE DARK  
DARK OAK

## PORTAPOSATE CUTLERY TRAY

Portaposate per cassetto da 120 cm.  
Possibilità di attrezzare n. 3 accessori di tipo A o B.  
120-cm drawer accessory.  
Can be equipped with 3 type A or B accessories.



31106429

ROVERE DARK  
DARK OAK



# “COMBILINE”

DISPONIBILE SOLO PER CASSETTI E CESTELLI  
CON SISTEMA DI GUIDE E SPONDE LEGRABOX /  
ONLY AVAILABLE FOR DRAWERS AND BASKETS  
WITH LEGRABOX RUNNER AND SIDE SYSTEM

CODICE / CODE

FINITURE / FINISHES

ernestomeda

## PORTACOLTELLI KNIFE TRAY

Accessorio tipo **A**.  
Type **A** accessory.

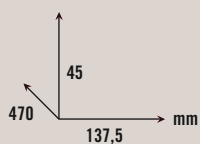


31106316

ROVERE DARK  
DARK OAK

## PORTAPELLICOLE KITCHEN FILM HOLDER

Accessorio tipo **B**.  
Type **B** accessory.



31106317

ROVERE DARK  
DARK OAK

# “COMBILINE”

DISPONIBILE SOLO PER CASSETTI E CESTELLI  
CON SISTEMA DI GUIDE E SPONDE LEGRABOX /  
ONLY AVAILABLE FOR DRAWERS AND BASKETS  
WITH LEGRABOX RUNNER AND SIDE SYSTEM

CODICE / CODE

FINITURE / FINISHES

ernestomeda

## BASE FORATA PER CESTELLI / PERFORATED BASKET BOTTOM

Base forata per cestello da 60 cm.

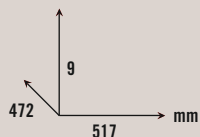
È possibile inserire e posizionare gli accessori dedicati in totale libertà grazie ai sottili perni di metallo inseriti nella base di ciascun modulo.

Nella realizzazione delle composizioni è importante tener conto dell'ingombro che occupa ogni modulo (n. fori).

60-cm basket accessory.

The specially-designed accessories can be fitted and positioned exactly as required using the thin metal pins in the base of each module.

When creating compositions it is important to calculate the space required by each module (nr. of holes).



31106302

ROVERE DARK  
DARK OAK

## BASE FORATA PER CESTELLI / PERFORATED BASKET BOTTOM

Base forata per cestello da 90 cm.

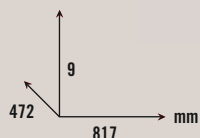
È possibile inserire e posizionare gli accessori dedicati in totale libertà grazie ai sottili perni di metallo inseriti nella base di ciascun modulo.

Nella realizzazione delle composizioni importante tener conto dell'ingombro che occupa ogni modulo (n. fori).

90-cm basket accessory.

The specially-designed accessories can be fitted and positioned exactly as required using the thin metal pins in the base of each module.

When creating compositions it is important to calculate the space required by each module (nr. of holes).



31106303

ROVERE DARK  
DARK OAK

# “COMBILINE”

DISPONIBILE SOLO PER CASSETTI E CESTELLI  
CON SISTEMA DI GUIDE E SPONDE LEGRABOX /  
ONLY AVAILABLE FOR DRAWERS AND BASKETS  
WITH LEGRABOX RUNNER AND SIDE SYSTEM

CODICE / CODE

FINITURE / FINISHES

ernestomeda

## BASE FORATA PER CESTELLI / PERFORATED BASKET BOTTOM

Accessorio per cestello da 120 cm.

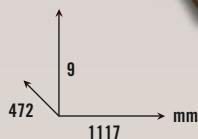
È possibile inserire e posizionare gli accessori dedicati in totale libertà grazie ai sottili perni di metallo inseriti nella base di ciascun modulo.

Nella realizzazione delle composizioni è importante tener conto dell'ingombro che occupa ogni modulo (n. fori).

120-cm basket accessory.

The specially-designed accessories can be fitted and positioned exactly as required using the thin metal pins in the base of each module.

When creating compositions it is important to calculate the space required by each module (nr. of holes).



31106304

ROVERE DARK  
DARK OAK

## CONFEZIONE N. 4 PIOLI SET OF 4 PEGS

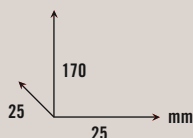
4 pioli diametro 25 mm.

4 pegs diam. 25 mm.



*La base forata deve essere ordinata a parte.*

*The perforated base must be ordered separately.*



31106305

ROVERE DARK  
DARK OAK

# “COMBILINE”

DISPONIBILE SOLO PER CASSETTI E CESTELLI  
CON SISTEMA DI GUIDE E SPONDE LEGRABOX /  
ONLY AVAILABLE FOR DRAWERS AND BASKETS  
WITH LEGRABOX RUNNER AND SIDE SYSTEM

CODICE / CODE

FINITURE / FINISHES

ernestomeda

## SET DI 3 DIVISORI SET OF 3 PARTITIONS

Ingombro di 4 fori orizzontali e 7 fori verticali.

Se non si usa il tramezzo piccolo  
è possibile montare i barattoli portapasta.

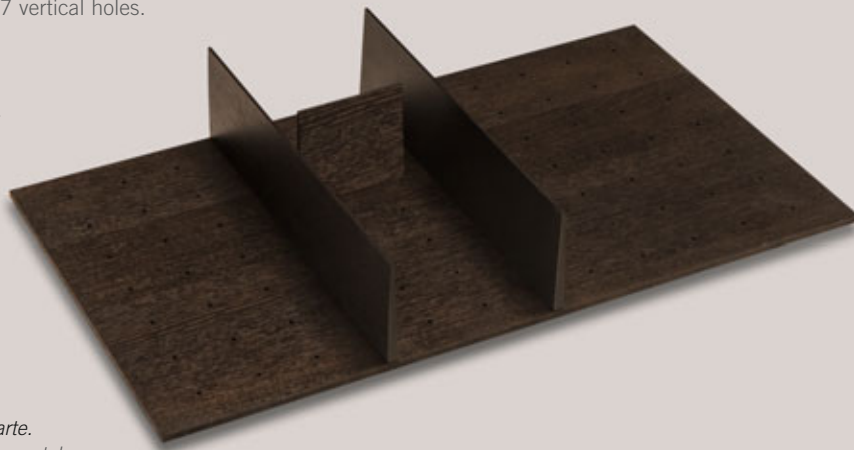
Con questi divisori non è possibile  
montare il coperchio e la croce divisoria.

Space occupied by 4 horizontal and 7 vertical holes.

If the small partition is not used,  
the spaces will take pasta jars.

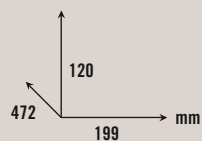
The cover and cross-partition

cannot be used with these partitions.



*La base forata deve essere ordinata a parte.*

*The perforated base must be ordered separately.*



31106306

ROVERE DARK  
DARK OAK

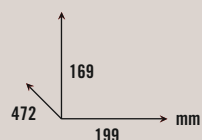
## BARATTOLI PORTAPASTA PASTA JARS

Confezione di 3 barattoli portapasta vetroinox.

Accessorio da montare in appoggio sui divisori 31106306.

Pack of 3 glass and stainless steel pasta jars.

Accessory for placing on top of the partitions 31106306.



31106307

ACCIAIO  
ACCIAIO

# “COMBILINE”

DISPONIBILE SOLO PER CASSETTI E CESTELLI  
CON SISTEMA DI GUIDE E SPONDE LEGRABOX /  
ONLY AVAILABLE FOR DRAWERS AND BASKETS  
WITH LEGRABOX RUNNER AND SIDE SYSTEM

CODICE / CODE

FINITURE / FINISHES

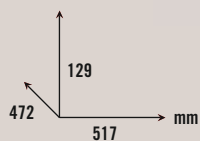
ernestomeda

## DIVISORIO COPERCHI LID PARTITION

Divisorio per cestello da 60 cm.  
con rivestimento in feltro.  
Felt-covered partition for 60 cm basket.



*La base forata deve essere ordinata a parte.  
The perforated base must be ordered separately.*



31106309

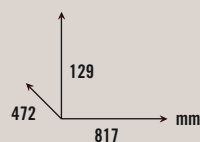
ROVERE DARK  
DARK OAK

## DIVISORIO COPERCHI LID PARTITION

Divisorio per cestello da 90 cm.  
con rivestimento in feltro.  
Felt-covered partition for 90 cm basket.



*La base forata deve essere ordinata a parte.  
The perforated base must be ordered separately.*



31106310

ROVERE DARK  
DARK OAK

# "COMBILINE"

DISPONIBILE SOLO PER CASSETTI E CESTELLI  
CON SISTEMA DI GUIDE E SPONDE LEGRABOX /  
ONLY AVAILABLE FOR DRAWERS AND BASKETS  
WITH LEGRABOX RUNNER AND SIDE SYSTEM

CODICE / CODE

FINITURE / FINISHES

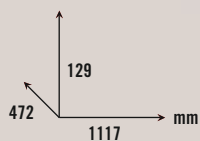
ernestomeda

## DIVISORIO COPERCHI LID PARTITION

Divisorio per cestello da 120 cm.  
con rivestimento in feltro.  
Felt-covered partition for 120 cm basket.



*La base forata deve essere ordinata a parte.  
The perforated base must be ordered separately.*

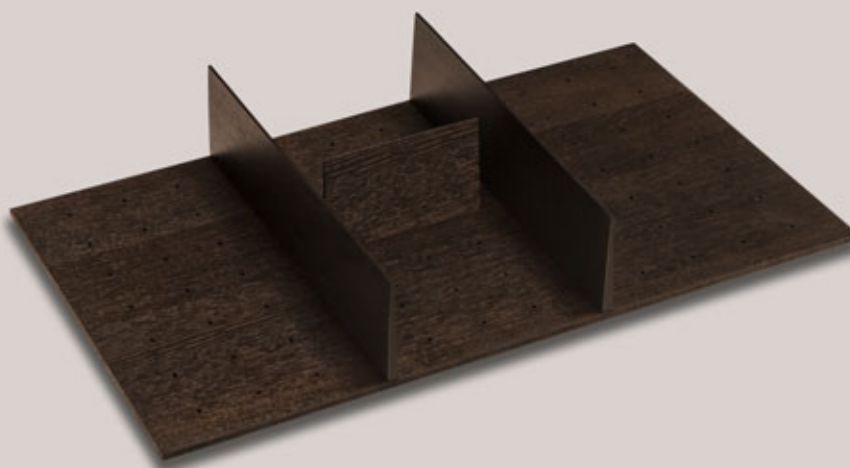


31106311

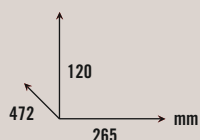
ROVERE DARK  
DARK OAK

## DIVISORIO GRANDE LARGE PARTITION FITTING

Ingombro di 5 fori orizzontali e 7 fori verticali.  
Sopra questi divisori è possibile montare  
il coperchio e inserire la croce divisoria.  
Con questi divisori non è possibile  
montare i barattoli portapasta.  
Space occupied by 5 horizontal  
and 7 vertical holes.  
Cover and cross-partition can be  
fitted on top of this fitting.  
Pasta jars cannot be installed  
on top of these partitions.



*La base forata deve essere ordinata a parte.  
The perforated base must be ordered separately.*



31106430

ROVERE DARK  
DARK OAK

# “COMBILINE”

DISPONIBILE SOLO PER CASSETTI E CESTELLI  
CON SISTEMA DI GUIDE E SPONDE LEGRABOX /  
ONLY AVAILABLE FOR DRAWERS AND BASKETS  
WITH LEGRABOX RUNNER AND SIDE SYSTEM

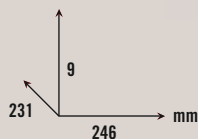
CODICE / CODE

FINITURE / FINISHES

ernestomeda

## CROCE DIVISORIA CROSS PARTITION

Accessorio da inserire nel divisorio  
grande (max. 2 pezzi).  
Accessory for installation in the large  
partition fitting (max 2 pcs).

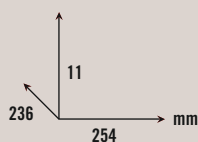


31106431

ROVERE DARK  
DARK OAK

## COPERCHIO CROCE CROSS PARTITION COVER

Accessorio da montare in appoggio  
sul divisorio grande (max. 2 pezzi).  
Accessory for installation on top of  
the large partition fitting (max. 2 pcs).



31106432

ROVERE DARK  
DARK OAK

# “COMBILINE”

DISPONIBILE SOLO PER CASSETTI E GESTELLI  
CON SISTEMA DI GUIDE E SPONDE LEGRABOX /  
ONLY AVAILABLE FOR DRAWERS AND BASKETS  
WITH LEGRABOX RUNNER AND SIDE SYSTEM

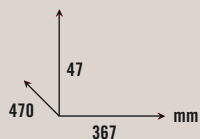
CODICE / CODE

FINITURE / FINISHES

ernestomeda

## PORTAPOSATE CUTLERY TRAY

Portaposate per cassetto da 45 cm.  
Non attrezzabile con nessun tipo di accessorio.  
45-cm drawer accessory.  
Cannot be equipped with any type of accessories.

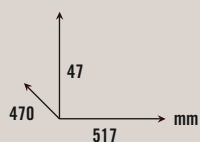
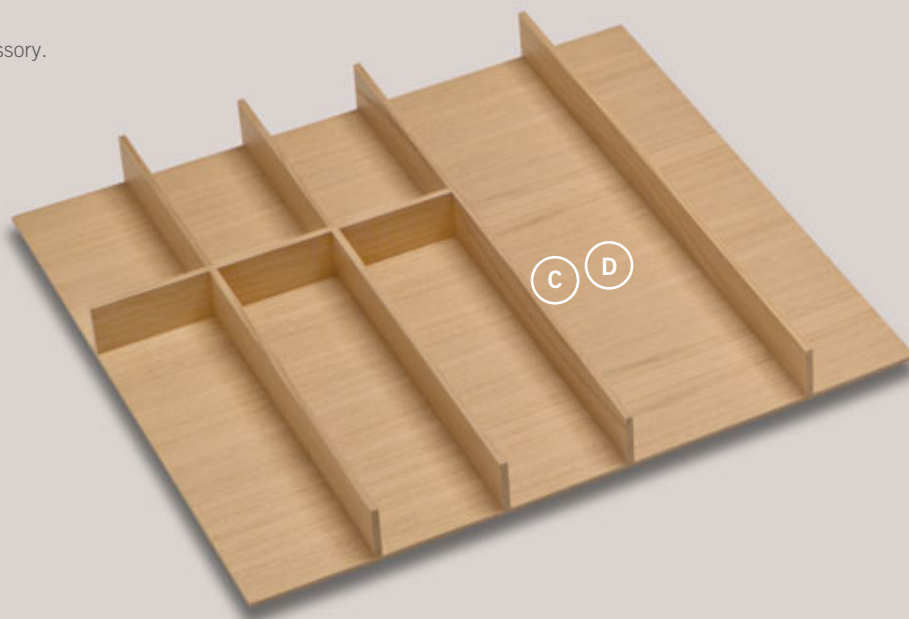


31106509

ROVERE SOFT  
SOFT OAK

## PORTAPOSATE CUTLERY TRAY

Portaposate per cassetto da 60 cm. Possibilità  
di attrezzare n. 1 accessorio di tipo C o D.  
60-cm drawer accessory.  
Can be equipped with 1 type C or D accessory.



31106510

ROVERE SOFT  
SOFT OAK



# “COMBILINE”

DISPONIBILE SOLO PER CASSETTI E CESTELLI  
CON SISTEMA DI GUIDE E SPONDE LEGRABOX /  
ONLY AVAILABLE FOR DRAWERS AND BASKETS  
WITH LEGRABOX RUNNER AND SIDE SYSTEM

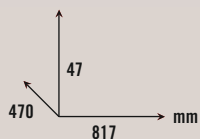
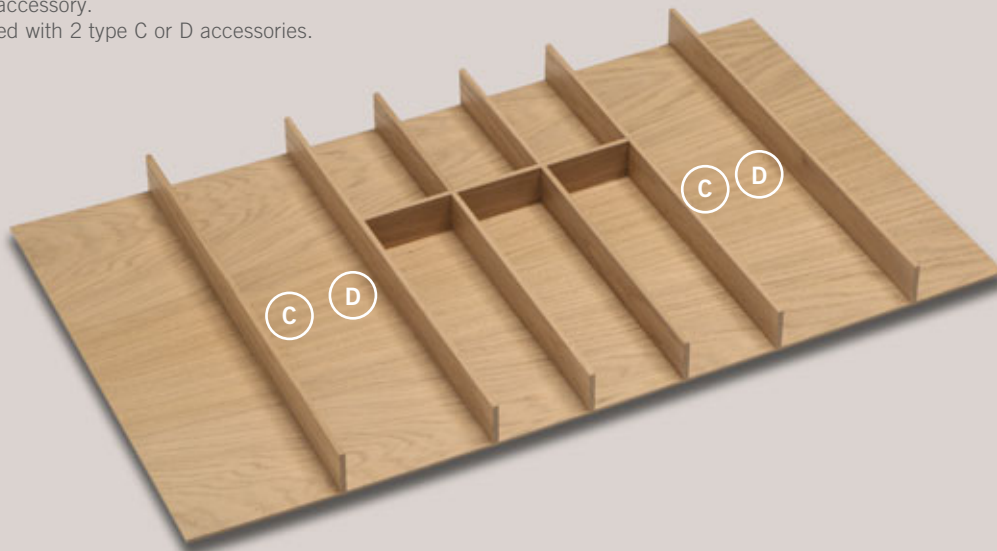
CODICE / CODE

FINITURE / FINISHES

ernestomeda

## PORTAPOSATE CUTLERY TRAY

Portaposate per cassetto da 90 cm.  
Possibilità di attrezzare n.2 accessori di tipo C o D.  
90-cm drawer accessory.  
Can be equipped with 2 type C or D accessories.

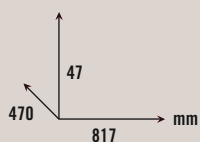
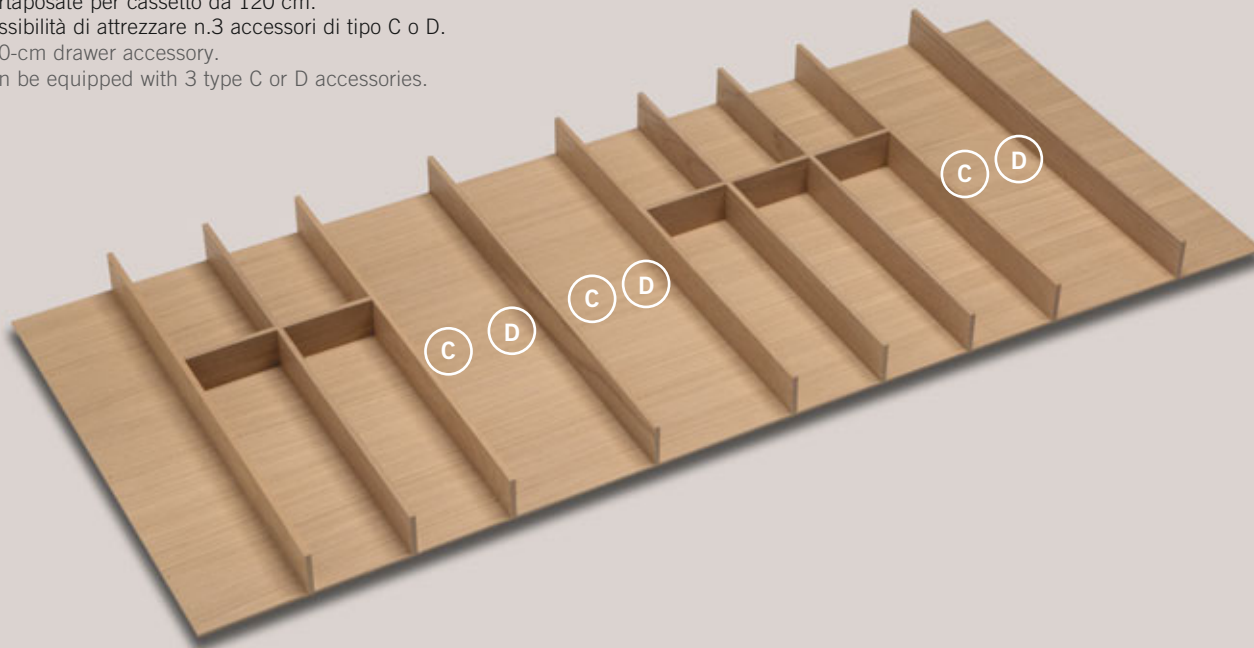


31106511

ROVERE SOFT  
SOFT OAK

## PORTAPOSATE CUTLERY TRAY

Portaposate per cassetto da 120 cm.  
Possibilità di attrezzare n.3 accessori di tipo C o D.  
120-cm drawer accessory.  
Can be equipped with 3 type C or D accessories.



31106512

ROVERE SOFT  
SOFT OAK

# "COMBILINE"

DISPONIBILE SOLO PER CASSETTI E CESTELLI  
CON SISTEMA DI GUIDE E SPONDE LEGRABOX /  
ONLY AVAILABLE FOR DRAWERS AND BASKETS  
WITH LEGRABOX RUNNER AND SIDE SYSTEM

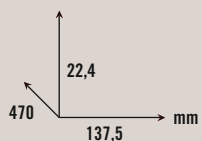
CODICE / CODE

FINITURE / FINISHES

ernestomeda

## PORTACOLTELLI KNIFE TRAY

Accessorio tipo **C**.  
Type **C** accessory.



31106513

ROVERE SOFT  
SOFT OAK

## PORTAPELLICOLE KITCHEN FILM HOLDER

Accessorio tipo **D**.  
Type **D** accessory.



31106514

ROVERE SOFT  
SOFT OAK

# “COMBILINE”

DISPONIBILE SOLO PER CASSETTI E CESTELLI  
CON SISTEMA DI GUIDE E SPONDE LEGRABOX /  
ONLY AVAILABLE FOR DRAWERS AND BASKETS  
WITH LEGRABOX RUNNER AND SIDE SYSTEM

CODICE / CODE

FINITURE / FINISHES

ernestomeda

## BASE FORATA PERFORATED BASE

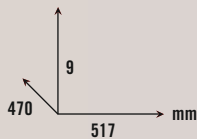
Accessorio per cestello da 60 cm.

È possibile inserire e posizionare gli accessori dedicati in totale libertà grazie ai sottili perni di metallo inseriti nella base di ciascun modulo. Nella realizzazione delle composizioni è importante tener conto dell'ingombro che occupa ogni modulo (n. fori).

60-cm basket accessory.

The specially-designed accessories can be fitted and positioned exactly as required using the thin metal pins in the base of each module.

When creating compositions it is important to calculate the space required by each module (nr. of holes).



31106501

ROVERE SOFT  
SOFT OAK

## BASE FORATA PERFORATED BASE

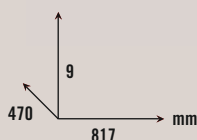
Accessorio per cestello da 90 cm.

È possibile inserire e posizionare gli accessori dedicati in totale libertà grazie ai sottili perni di metallo inseriti nella base di ciascun modulo. Nella realizzazione delle composizioni è importante tener conto dell'ingombro che occupa ogni modulo (n. fori).

90-cm basket accessory.

The specially-designed accessories can be fitted and positioned exactly as required using the thin metal pins in the base of each module.

When creating compositions it is important to calculate the space required by each module (nr. of holes).



31106502

ROVERE SOFT  
SOFT OAK

# “COMBILINE”

DISPONIBILE SOLO PER CASSETTI E CESTELLI  
CON SISTEMA DI GUIDE E SPONDE LEGRABOX /  
ONLY AVAILABLE FOR DRAWERS AND BASKETS  
WITH LEGRABOX RUNNER AND SIDE SYSTEM

CODICE / CODE

FINITURE / FINISHES

ernestomeda

## BASE FORATA PERFORATED BASE

Accessorio per cestello da 120 cm.

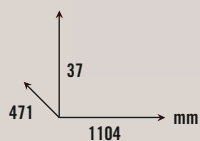
È possibile inserire e posizionare gli accessori dedicati in totale libertà grazie ai sottili perni di metallo inseriti nella base di ciascun modulo.

Nella realizzazione delle composizioni è importante tener conto dell'ingombro che occupa ogni modulo (n. fori).

120-cm basket accessory.

The specially-designed accessories can be fitted and positioned exactly as required using the thin metal pins in the base of each module.

When creating compositions it is important to calculate the space required by each module (nr. of holes).



31106503

ROVERE SOFT  
SOFT OAK

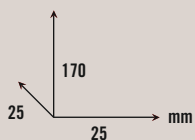
## CONFEZIONE N. 4 PIOLI SET OF 4 PEGS

n. 4 pioli diametro 25 mm.

4 pegs diam. 25 mm.



*La base forata deve essere ordinata a parte.  
The perforated base must be ordered separately.*



31106504

ROVERE SOFT  
SOFT OAK

# “COMBILINE”

DISPONIBILE SOLO PER CASSETTI E CESTELLI  
CON SISTEMA DI GUIDE E SPONDE LEGRABOX /  
ONLY AVAILABLE FOR DRAWERS AND BASKETS  
WITH LEGRABOX RUNNER AND SIDE SYSTEM

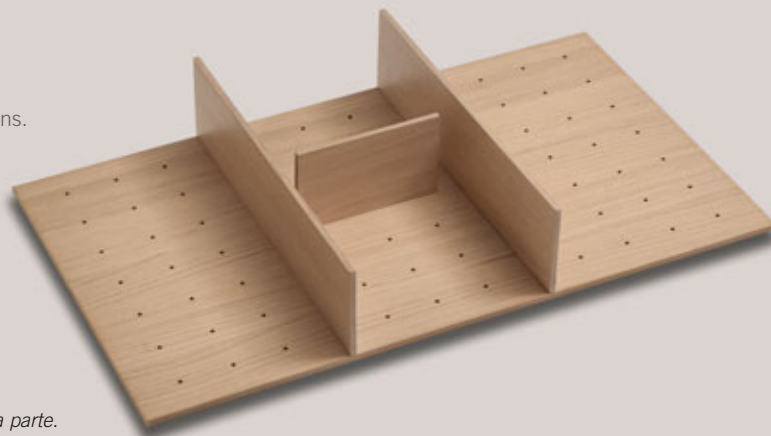
CODICE / CODE

FINITURE / FINISHES

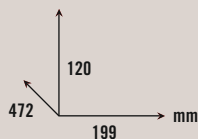
ernestomeda

## SET DI 3 DIVISORI 3 PARTITION SET

Ingombro di 4 fori orizzontali e 7 fori verticali.  
Se non si usa il tramezzo piccolo  
è possibile montare i barattoli portapasta.  
Con questi divisori non è possibile  
montare il coperchio e la croce divisoria.  
Space occupied by 4 horizontal  
and 7 vertical holes.  
If the small partition is not used,  
the spaces will take pasta jars.  
The cover and cross-partition  
cannot be used with these partitions.



*La base forata deve essere ordinata a parte.  
The perforated base must be ordered separately.*

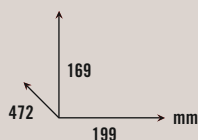


31106505

ROVERE SOFT  
SOFT OAK

## BARATTOLI PORTAPASTA PASTA JARS

Confezione di 3 barattoli portapasta vetroinox.  
Accessorio da montare in appoggio sui divisori 311106505.  
Pack of 3 glass and stainless steel pasta jars.  
Accessory for placing on top of the partitions 311106505.



31106307

ACCIAIO  
STEEL

# “COMBILINE”

DISPONIBILE SOLO PER CASSETTI E CESTELLI  
CON SISTEMA DI GUIDE E SPONDE LEGRABOX /  
ONLY AVAILABLE FOR DRAWERS AND BASKETS  
WITH LEGRABOX RUNNER AND SIDE SYSTEM

CODICE / CODE

FINITURE / FINISHES

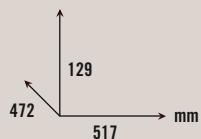
ernestomeda

## DIVISORIO COPERCHI LID PARTITION

Divisorio per cestello da 60 cm  
con rivestimento in feltro.  
Felt-covered partition for 60 cm basket.



*La base forata deve essere ordinata a parte.  
The perforated base must be ordered separately.*



31106506

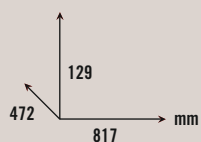
ROVERE SOFT  
SOFT OAK

## DIVISORIO COPERCHI LID PARTITION

Divisorio per cestello da 90 cm  
con rivestimento in feltro.  
Felt-covered partition for 90 cm basket.



*La base forata deve essere ordinata a parte.  
The perforated base must be ordered separately.*



31106507

ROVERE SOFT  
SOFT OAK

# “COMBILINE”

DISPONIBILE SOLO PER CASSETTI E CESTELLI  
CON SISTEMA DI GUIDE E SPONDE LEGRABOX /  
ONLY AVAILABLE FOR DRAWERS AND BASKETS  
WITH LEGRABOX RUNNER AND SIDE SYSTEM

CODICE / CODE

FINITURE / FINISHES

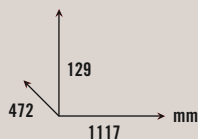
ernestomeda

## DIVISORIO COPERCHI LID PARTITION

Divisorio per cestello da 120 cm  
con rivestimento in feltro.  
Felt-covered partition for 120 cm basket.



*La base forata deve essere ordinata a parte.  
The perforated base must be ordered separately.*

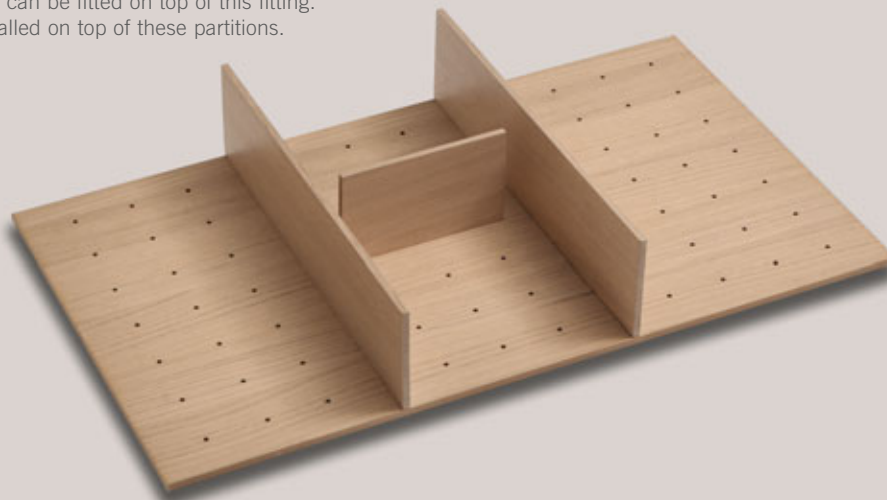


31106508

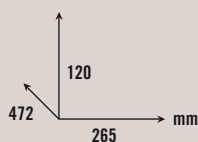
ROVERE SOFT  
SOFT OAK

## DIVISORIO GRANDE LARGE PARTITION FITTING

Ingombro di 5 fori orizzontali e 7 fori verticali.  
Sopra questi divisori è possibile montare il coperchio e inserire la croce divisoria.  
Con questi divisori non è possibile montare i barattoli portapasta.  
Space occupied by 5 horizontal and 7 vertical holes.  
Cover and cross-partition can be fitted on top of this fitting.  
Pasta jars cannot be installed on top of these partitions.



*La base forata deve essere ordinata a parte.  
The perforated base must be ordered separately.*



31106515

ROVERE SOFT  
SOFT OAK

# "COMBILINE"

DISPONIBILE SOLO PER CASSETTI E GESTELLI  
CON SISTEMA DI GUIDE E SPONDE LEGRABOX /  
ONLY AVAILABLE FOR DRAWERS AND BASKETS  
WITH LEGRABOX RUNNER AND SIDE SYSTEM

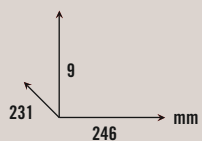
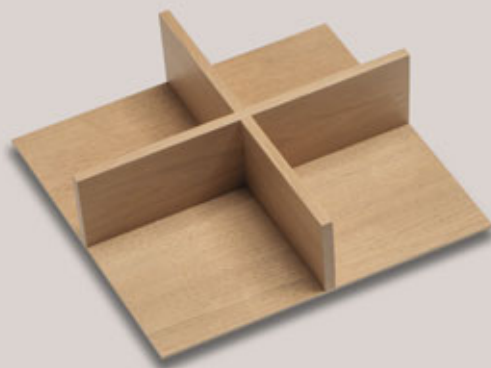
CODICE / CODE

FINITURE / FINISHES

ernestomeda

## CROCE DIVISORIA CROSS PARTITION

Accessorio da inserire nel divisorio grande  
(max 2 pezzi).  
Accessory for installation in the large partition  
fitting (max 2 pcs).

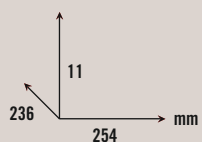


31106516

ROVERE SOFT  
SOFT OAK

## COPERCHIO CROCE CROSS PARTITION COVER

Accessorio da montare in appoggio  
sul divisorio grande (max 2 pezzi).  
Accessory for installation on top  
of the large partition fitting (max. 2 pcs).



31106517

ROVERE SOFT  
SOFT OAK



A close-up photograph of a wooden drawer divider. The divider is made of dark-stained wood, likely walnut, and features a central rectangular section made of a lighter-colored material, possibly steel. The wood grain is clearly visible, and the lighting creates soft shadows, highlighting the three-dimensional structure of the divider.

ACCESSORI PER CASSETTI E CESTELLI / DRAWER AND BASKET ACCESSORIES

**PIX**  
acciaio e noce *steel and walnut*

**ernestomeda**

A close-up photograph of dark-stained wooden drawer dividers. The dividers are arranged in a grid pattern, creating rectangular compartments. The wood grain is clearly visible, and the lighting creates soft shadows, highlighting the three-dimensional structure of the dividers.

ACCESSORI PER CASSETTI E CESTELLI / DRAWER AND BASKET ACCESSORIES

**PIX**

acciaio e rovere *steel and oak*

ernestomeda



ernestomeda

**PIX**

ernestomeda

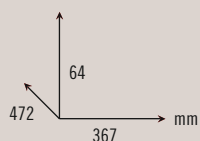
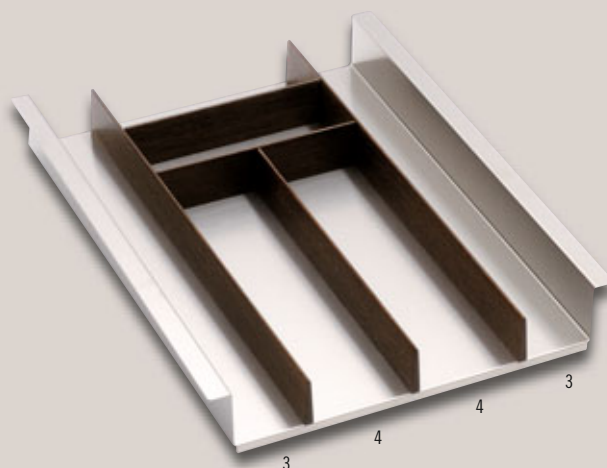


PIX

ernestomeda

## PORTAPOSATE CUTLERY TRAY

Accessorio per cassetto da 45 cm.  
Possibilità di attrezzare n.2 accessori di tipo 3 e n.2 accessori di tipo 4.  
45-cm drawer accessory.  
Can be equipped with n. 2 accessories type 3 and n.2 accessories type 4.

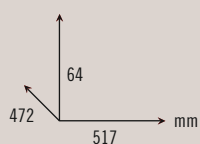
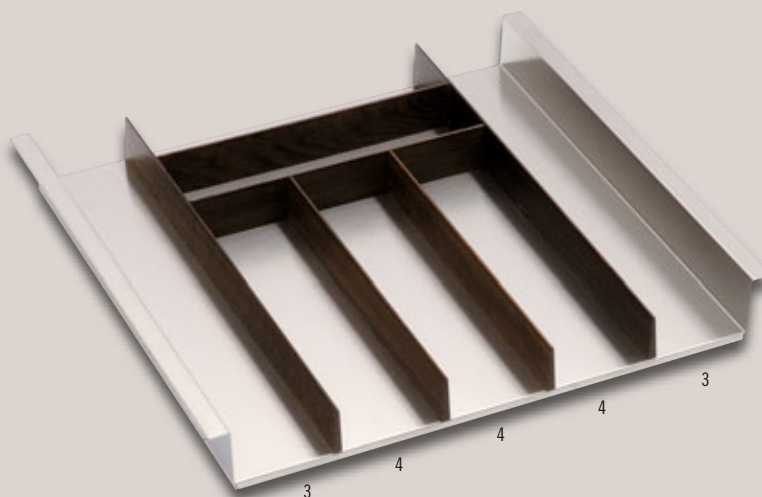


31105837

ROVERE FONDO ACCIAIO  
OAK STEEL BOTTOM

## PORTAPOSATE CUTLERY TRAY

Accessorio per cassetto da 60 cm.  
Possibilità di attrezzare n.2 accessori di tipo 3 e n.3 accessori di tipo 4.  
60-cm drawer accessory.  
Can be equipped with n. 2 accessories type 3 and n.3 accessories type 4.

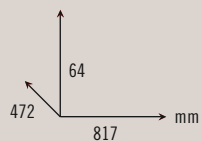
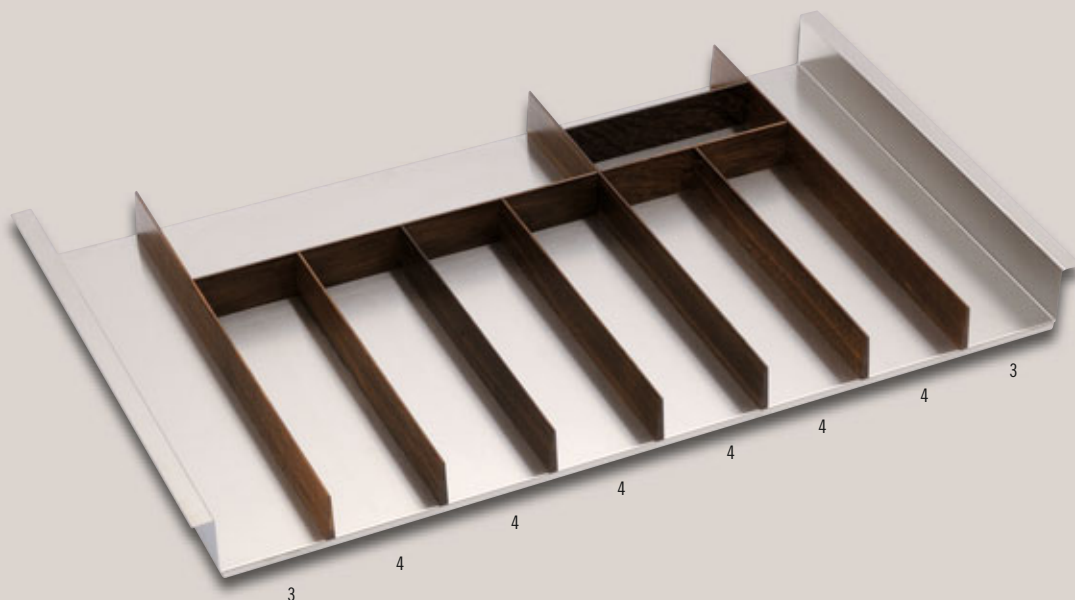


31105838

ROVERE FONDO ACCIAIO  
OAK STEEL BOTTOM

## PORTAPOSATE CUTLERY TRAY

Accessorio per cassetto da 90 cm.  
Possibilità di attrezzare n.2 accessori di tipo 3 e n.6 accessori di tipo 4.  
90-cm drawer accessory.  
Can be equipped with n. 2 accessories type 3 and n.6 accessories type 4.

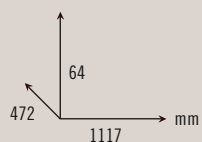
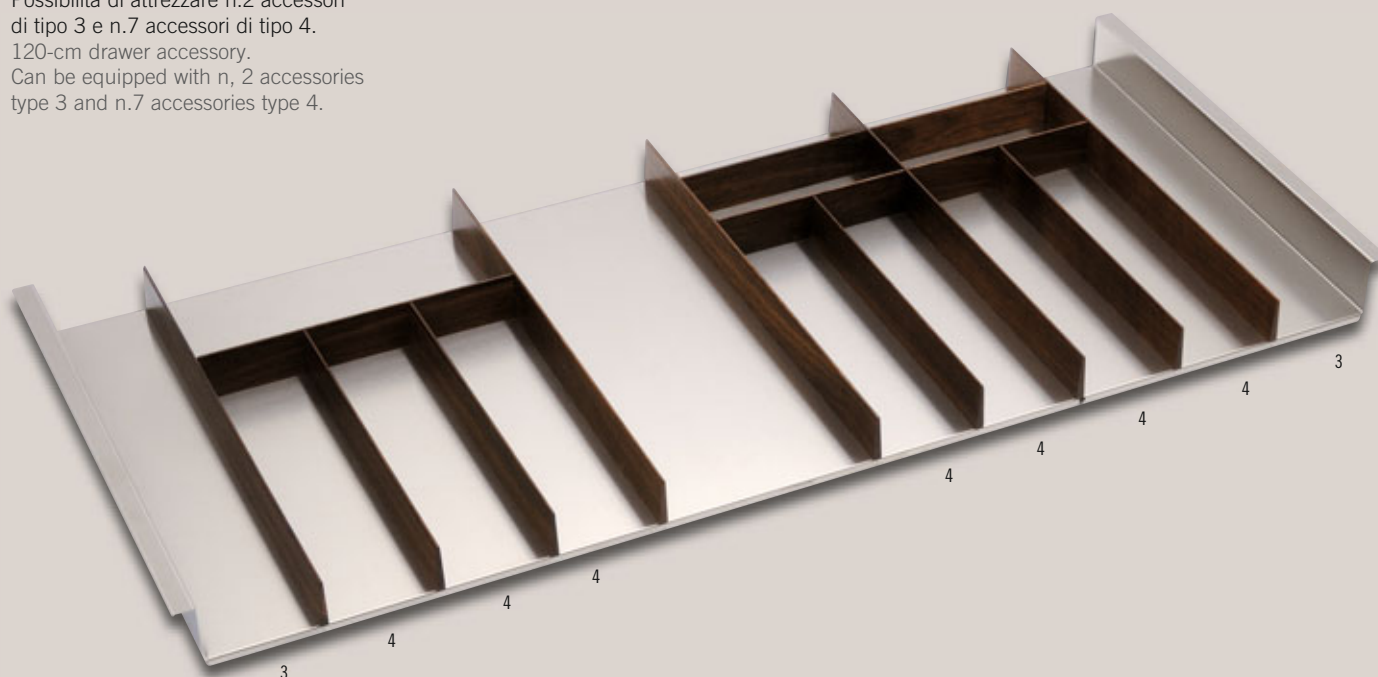


31105839

ROVERE FONDO ACCIAIO  
OAK STEEL BOTTOM

## PORTAPOSATE CUTLERY TRAY

Accessorio per cassetto da 120 cm.  
Possibilità di attrezzare n.2 accessori di tipo 3 e n.7 accessori di tipo 4.  
120-cm drawer accessory.  
Can be equipped with n. 2 accessories type 3 and n.7 accessories type 4.

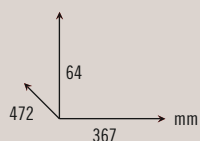
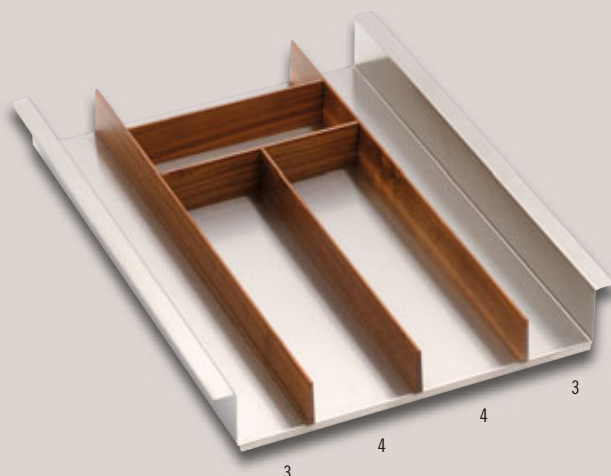


31105844

ROVERE FONDO ACCIAIO  
OAK STEEL BOTTOM

## PORTAPOSATE CUTLERY TRAY

Accessorio per cassetto da 45 cm.  
Possibilità di attrezzare n.2 accessori di tipo 3 e n.2 accessori di tipo 4.  
45-cm drawer accessory.  
Can be equipped with n.2 accessories type 3 and n.2 accessories type 4.

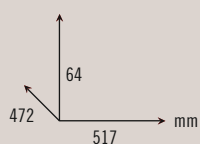
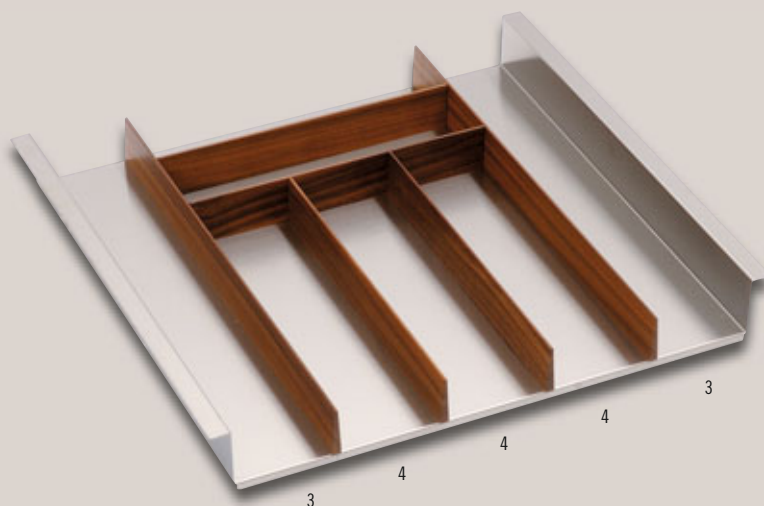


31105841

NOCE FONDO ACCIAIO  
WALNUT STEEL BOTTOM

## PORTAPOSATE CUTLERY TRAY

Accessorio per cassetto da 60 cm.  
Possibilità di attrezzare n.2 accessori di tipo 3 e n.3 accessori di tipo 4.  
60-cm drawer accessory.  
Can be equipped with n.2 accessories type 3 and n.3 accessories type 4.

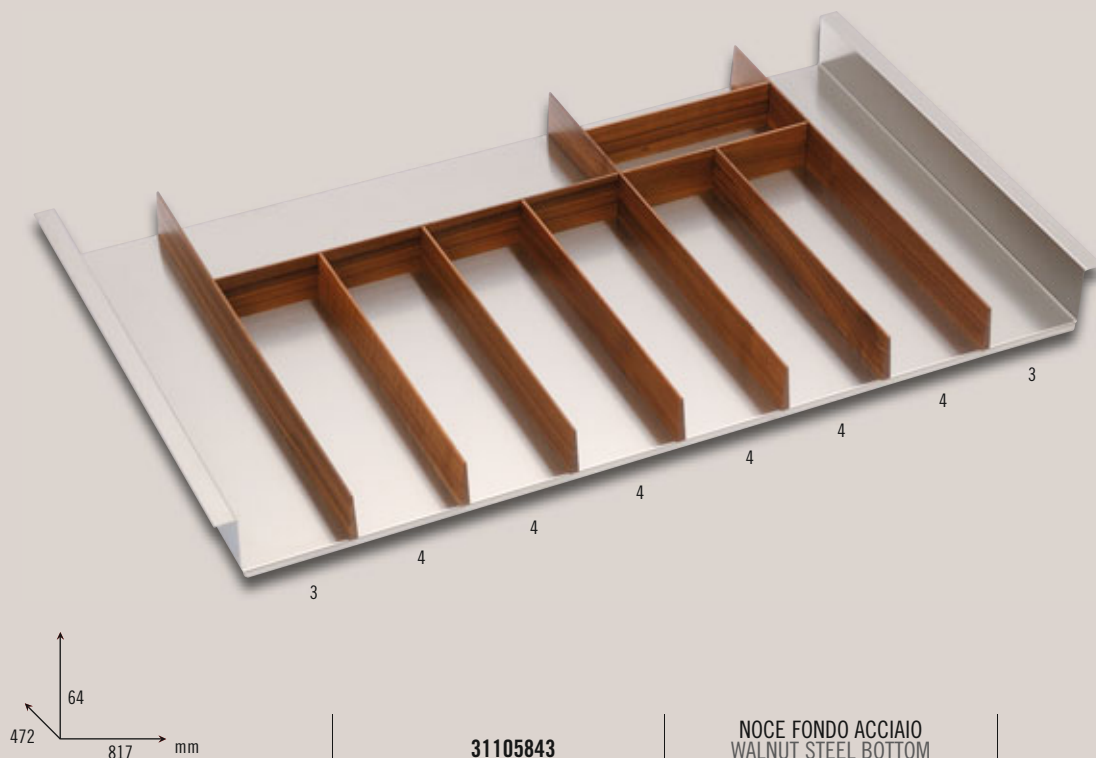


31105842

NOCE FONDO ACCIAIO  
WALNUT STEEL BOTTOM

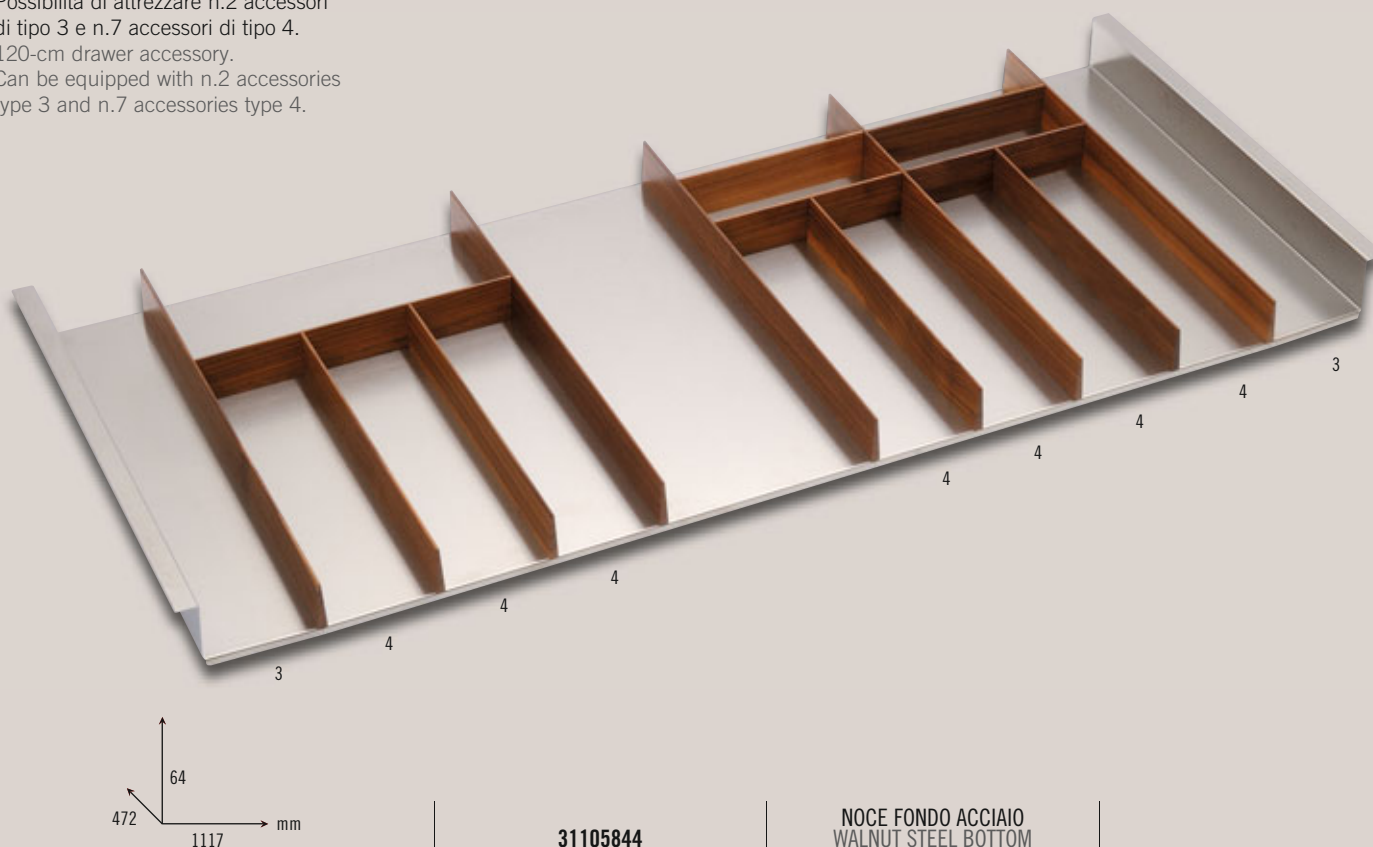
## PORTAPOSATE CUTLERY TRAY

Accessorio per cassetto da 90 cm.  
Possibilità di attrezzare n.2 accessori di tipo 3 e n.6 accessori di tipo 4.  
90-cm drawer accessory.  
Can be equipped with n.2 accessories type 3 and n.6 accessories type 4.



## PORTAPOSATE CUTLERY TRAY

Accessorio per cassetto da 120 cm.  
Possibilità di attrezzare n.2 accessori di tipo 3 e n.7 accessori di tipo 4.  
120-cm drawer accessory.  
Can be equipped with n.2 accessories type 3 and n.7 accessories type 4.





# "PIX"

ACCESSORI PER CASSETTI / DRAWER ACCESSORIES

CODICE / CODE

FINITURE / FINISHES

ernestomeda

## PORTAPPELLICOLA KITCHEN FILM HOLDER

ACCESSORIO / ACCESSORY **4**

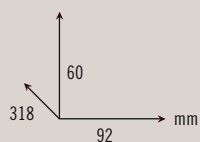


31105861

ACCIAIO  
STEEL

## PORTASPEZIE SPICE RACK

ACCESSORIO / ACCESSORY **4**



31105862

ACCIAIO  
STEEL

# "PIX"

ACCESSORI PER CASSETTI / DRAWER ACCESSORIES

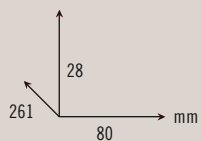
CODICE / CODE

FINITURE / FINISHES

ernestomeda

## PORTACOLTELLI KNIFE TRAY

ACCESSORIO / ACCESSORY **3**

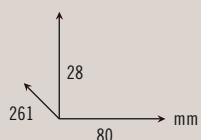


31105889

ACCIAIO E ROVERE  
STEEL AND OAK

## PORTACOLTELLI KNIFE TRAY

ACCESSORIO / ACCESSORY **3**

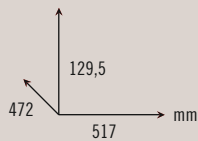
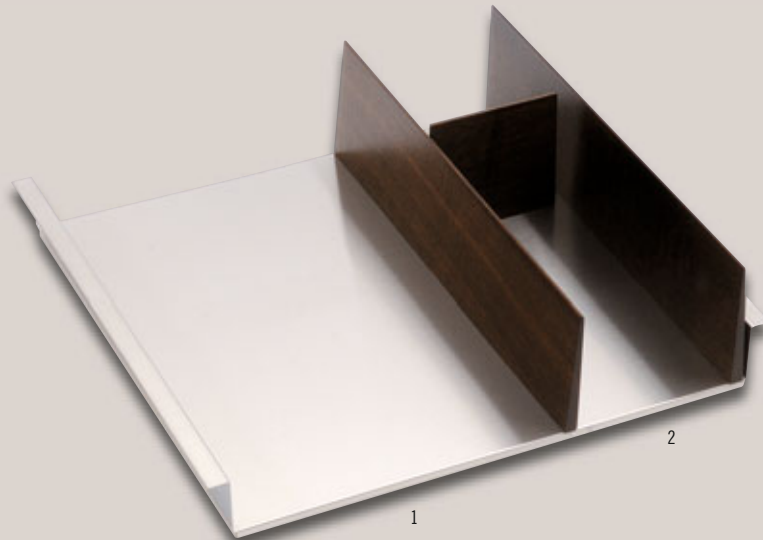


31105888

ACCIAIO E NOCE  
STEEL AND WALNUT

## PORTACCESSORI ACCESSORIES RACK

Accessorio per cestello da 60 cm.  
Possibilità di attrezzare n.1 accessorio di tipo 1 e n.1 accessorio di tipo 2.  
60-cm basket accessory.  
Can be equipped with n.1 accessory type 1 and n.1 accessory type 2.

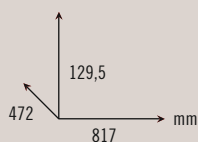
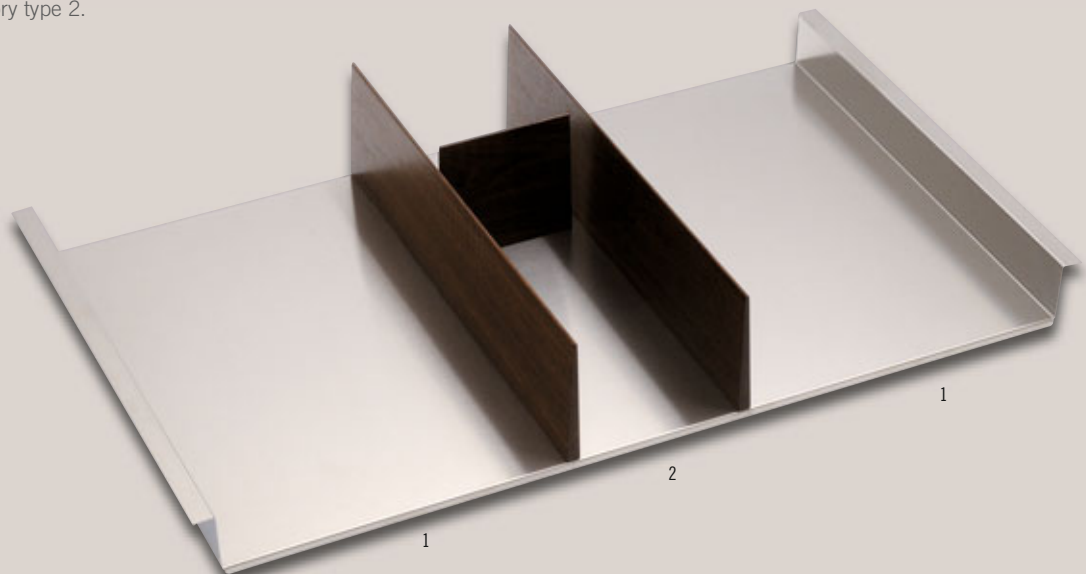


31105863

ROVERE FONDO ACCIAIO  
OAK STEEL BOTTOM

## PORTACCESSORI ACCESSORIES RACK

Accessorio per cestello da 90 cm.  
Possibilità di attrezzare n.2 accessori di tipo 1 e n.1 accessorio di tipo 2.  
90-cm basket accessory.  
Can be equipped with n.2 accessories type 1 and n.1 accessory type 2.



31105864

ROVERE FONDO ACCIAIO  
OAK STEEL BOTTOM

# "PIX"

ACCESSORI PER CESTELLI / BASKET ACCESSORIES

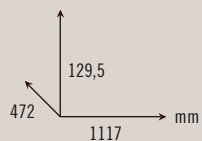
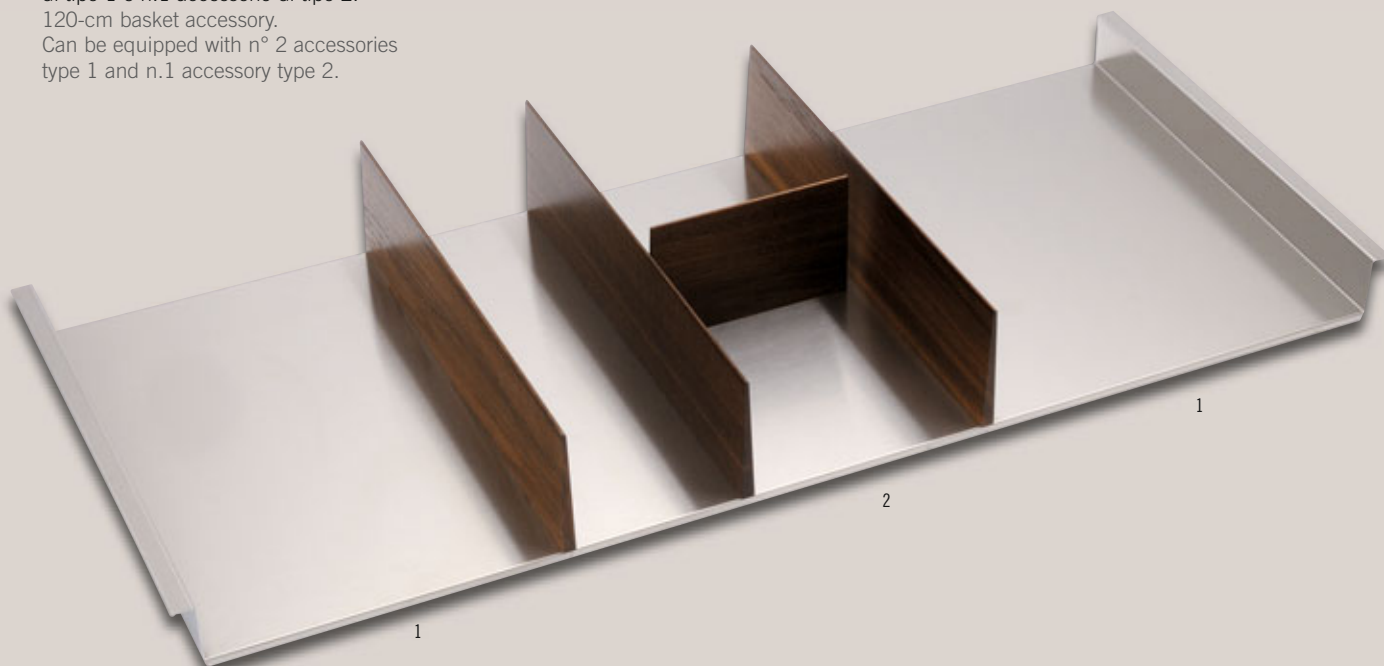
CODICE / CODE

FINITURE / FINISHES

ernestomeda

## PORTACCESSORI ACCESSORIES RACK

Accessorio per cestello da 120 cm.  
Possibilità di attrezzare n.2 accessori  
di tipo 1 e n.1 accessorio di tipo 2.  
120-cm basket accessory.  
Can be equipped with n° 2 accessories  
type 1 and n.1 accessory type 2.

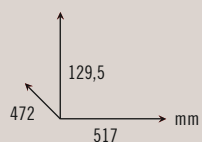
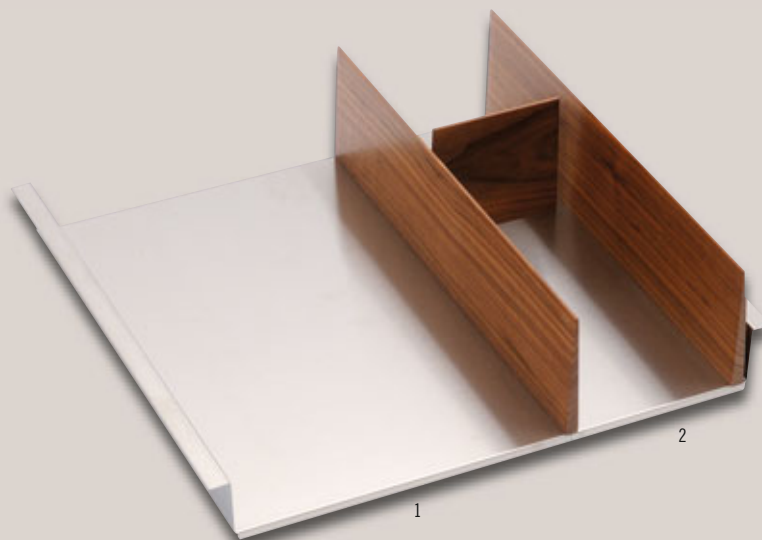


31105865

ROVERE FONDO ACCIAIO  
OAK STEEL BOTTOM

## PORTACCESSORI ACCESSORIES RACK

Accessorio per cestello da 60 cm.  
Possibilità di attrezzare n.1 accessorio  
di tipo 1 e n.1 accessorio di tipo 2.  
60-cm basket accessory.  
Can be equipped with n.1 accessory  
type 1 and n.1 accessory type 2.

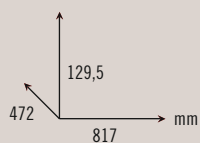
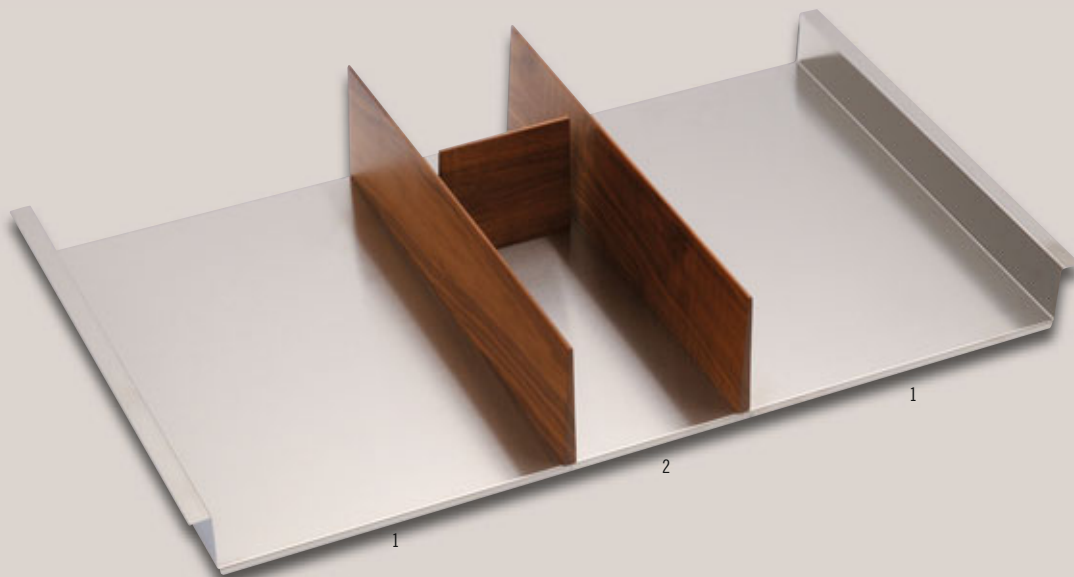


31105872

NOCE FONDO ACCIAIO  
WALNUT STEEL BOTTOM

## PORTACCESSORI ACCESSORIES RACK

Accessorio per cestello da 90 cm.  
Possibilità di attrezzare n.2 accessori di tipo 1 e n.1 accessorio di tipo 2.  
90-cm basket accessory.  
Can be equipped with n.2 accessories type 1 and n.1 accessories type 2.

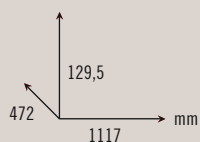
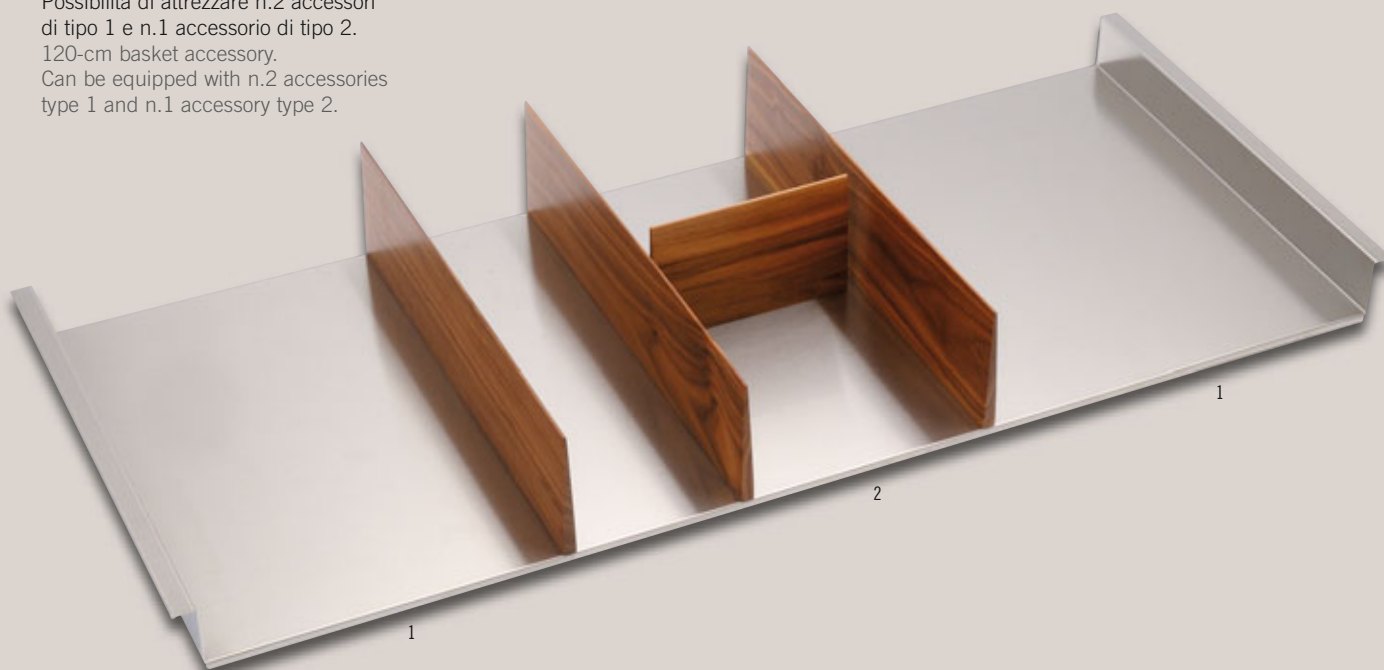


31105873

NOCE FONDO ACCIAIO  
WALNUT STEEL BOTTOM

## PORTACCESSORI ACCESSORIES RACK

Accessorio per cestello da 120 cm.  
Possibilità di attrezzare n.2 accessori di tipo 1 e n.1 accessorio di tipo 2.  
120-cm basket accessory.  
Can be equipped with n.2 accessories type 1 and n.1 accessory type 2.



31105874

NOCE FONDO ACCIAIO  
WALNUT STEEL BOTTOM

# "PIX"

ACCESSORI PER CESTELLI / BASKET ACCESSORIES

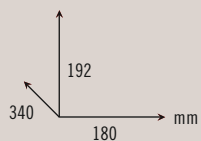
CODICE / CODE

FINITURE / FINISHES

ernestomeda

## PORTAPIATTI PLATE RACK

ACCESSORIO / ACCESSORY ①

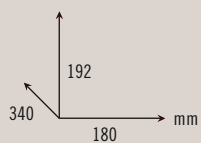


31105881

ROVERE  
OAK

## PORTAPIATTI PLATE RACK

ACCESSORIO / ACCESSORY ①

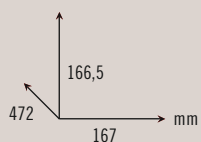


31105882

NOCE  
WALNUT

## PORTAPASTA PASTA RACK

ACCESSORIO / ACCESSORY ②



31105885

ACCIAIO  
STEEL

ACCESSORI PER CASSETTI E CESTELLI / DRAWER AND BASKET ACCESSORIES

**BLINK**  
acciaio e wengé *steel and wengé*

**ernestomeda**

ACCESSORI PER CASSETTI E CESTELLI / DRAWER AND BASKET ACCESSORIES

**BLINK**

wengé

ernestomeda





ernestomeda

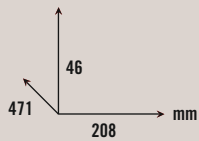
**BLINK**

ernestomeda



## PORTAPOSATE IN WENGE' CUTLERY TRAY IN WENGE'

Accessorio per cassetto da 30 cm.  
Non attrezzabile  
con nessun tipo di accessorio.  
30-cm drawer accessory.  
Cannot be equipped  
with any type of accessories.



31106489

WENGE' CON FONDO WENGE'  
WENGE' WITH WENGE' BOTTOM

## PORTAPOSATE IN WENGE' CUTLERY TRAY IN WENGE'

Accessorio per cassetto da 45 cm.  
Possibilità di attrezzare  
n.1 accessorio di tipo A.  
45-cm drawer accessory.  
Can be equipped  
with n.1 accessory type A.

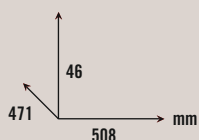


31106490

WENGE' CON FONDO WENGE'  
WENGE' WITH WENGE' BOTTOM

## PORTAPOSATE IN WENGE' CUTLERY TRAY IN WENGE'

Accessorio per cassetto da 60 cm.  
Possibilità di attrezzare  
n.2 accessori di tipo A.  
60-cm drawer accessory.  
Can be equipped  
with n.2 accessories type A.



31106491

WENGE' CON FONDO WENGE'  
WENGE' WITH WENGE' BOTTOM

# "BLINK"

ACCESSORI PER CASSETTI / DRAWER ACCESSORIES

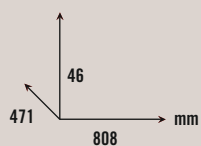
CODICE / CODE

FINITURE / FINISHES

ernestomeda

## PORTAPOSATE IN WENGE' CUTLERY TRAY IN WENGE'

Accessorio per cassetto da 90 cm.  
Possibilità di attrezzare n.3 accessori di tipo A.  
90-cm drawer accessory.  
Can be equipped with n.3 accessories type A.

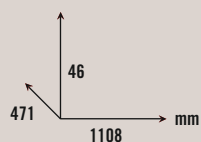


31106492

WENGE' CON FONDO WENGE'  
WENGE' WITH WENGE' BOTTOM

## PORTAPOSATE IN WENGE' CUTLERY TRAY IN WENGE'

Accessorio per cassetto da 120 cm.  
Possibilità di attrezzare n.5 accessori di tipo A.  
120-cm drawer accessory.  
Can be equipped with n.5 accessories type A.

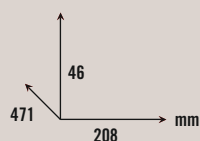


31106493

WENGE' CON FONDO WENGE'  
WENGE' WITH WENGE' BOTTOM

## PORTAPOSATE IN WENGE' CUTLERY TRAY IN WENGE'

Accessorio per cassetto da 30 cm.  
Non attrezzabile con nessun tipo di accessorio.  
30-cm drawer accessory.  
Can not be equipped with accessories.

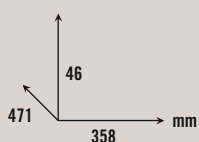


31106484

WENGE' CON FONDO ACCIAIO  
WENGE' WITH STEEL BOTTOM

## PORTAPOSATE IN WENGE' CUTLERY TRAY IN WENGE'

Accessorio per cassetto da 45 cm.  
Possibilità di attrezzare  
n.1 accessorio di tipo A.  
45-cm drawer accessory.  
Can be equipped with  
n. 1 accessory type A.

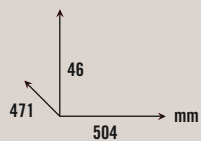


31106485

WENGE' CON FONDO ACCIAIO  
WENGE' WITH STEEL BOTTOM

## PORTAPOSATE IN WENGE' CUTLERY TRAY IN WENGE'

Accessorio per cassetto da 60 cm.  
Possibilità di attrezzare  
n.2 accessori di tipo A.  
60-cm drawer accessories.  
Can be equipped with  
n. 2 accessories type A.

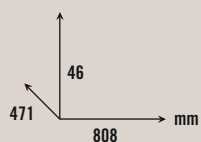


31106486

WENGE' CON FONDO ACCIAIO  
WENGE' WITH STEEL BOTTOM

## PORTAPOSATE IN WENGE' CUTLERY TRAY IN WENGE'

Accessorio per cassetto da 90 cm.  
Possibilità di attrezzare n.3 accessori di tipo A.  
90-cm drawer accessory.  
Can be equipped with n. 3 accessories type A.



31106487

WENGE' CON FONDO ACCIAIO  
WENGE' WITH STEEL BOTTOM

# "BLINK"

ACCESSORI PER CASSETTI / DRAWER ACCESSORIES

CODICE / CODE

FINITURE / FINISHES

ernestomeda

## PORTAPOSATE IN WENGE' CUTLERY TRAY IN WENGE'

Accessorio per cassetto da 120 cm.  
Possibilità di attrezzare n.5 accessori di tipo A.  
120-cm drawer accessory.  
Can be equipped with n.5 accessories type A.

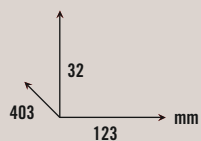


31106488

WENGE' CON FONDO ACCIAIO  
WENGE' WITH STEEL BOTTOM

## PORTACOLTELLI KNIFE TRAY

Accessorio da 15 cm per cassetto.  
Struttura in acciaio con supporto in  
polietilene con vano utile per 8 coltelli.  
15-cm accessory for drawer.  
Steel structure with polyethylene support  
with compartment to take 8 knives.

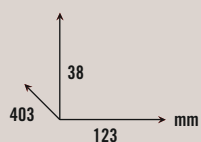
ACCESSORIO / ACCESSORY **A**

31105808

ACCIAIO  
STEEL

## PORTACUKI DOPPIO DOUBLE CUKI RACK

Accessorio da 15 cm per cassetto.  
Struttura in acciaio con coperchio  
con vano utile per 2 rotoli.  
15-cm accessory for drawer.  
Steel structure with lid with  
compartment to take 2 rolls.

ACCESSORIO / ACCESSORY **A**

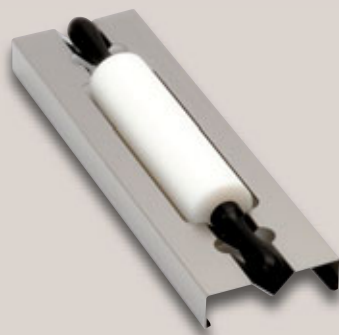
31105809



## PORTAMATTARELLO ROLLING PIN HOLDER

Accessorio da 15 cm per cassetto.  
Struttura in acciaio e mattarello in polietilene.  
15-cm accessory for drawer.  
Steel structure and polyethylene rolling pin.

ACCESSORIO / ACCESSORY **A**

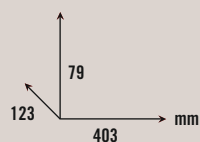


31105810

## PORTABARATTOLI CON 3 BARATTOLI VETRO JAR RACK WITH 3 GLASS JAR

Accessorio da 15 cm per cassetto.  
Struttura in acciaio completa di 3 barattoli in vetro e coperchi inox-sughero.  
15-cm accessory for drawer.  
Steel structure complete with 3 glass jars and stainless steel-cork lids.

ACCESSORIO / ACCESSORY **A**

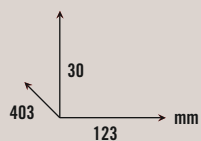
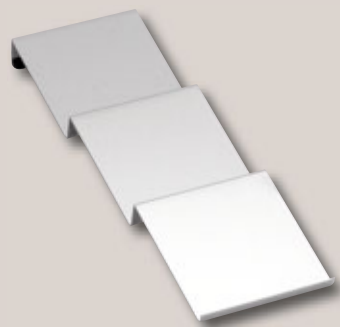


31105811

ACCIAIO  
STEEL

## PORTASPEZIE SPICE RACK

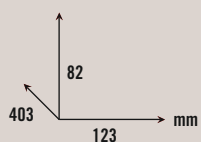
Accessorio da 15 cm per cassetto.  
Struttura in acciaio a 3 ripiani inclinati.  
15-cm accessory for drawer.  
Steel structure with 3 slanting shelves.

ACCESSORIO / ACCESSORY **A**

31105812

## PORTASPEZIE CON BOCCHETTE SPICE RACK WITH CONDIMENT BOTTLES

Accessorio da 15 cm per cassetto.  
Struttura in acciaio completo di 12 boccette portaspezie.  
15-cm accessory for drawer.  
Steel structure with 12 spice rack bottles.

ACCESSORIO / ACCESSORY **A**

31105814

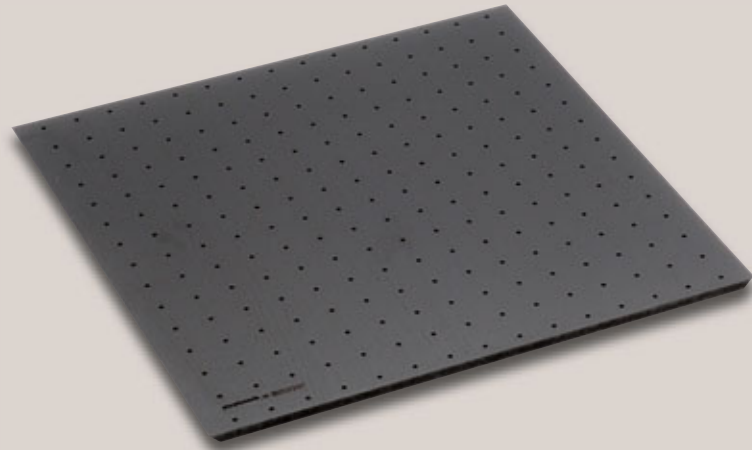
ACCIAIO  
STEEL

## BASE FORATA PER CESTELLI IN WENGE' PERFORATED WENGE' BASKET BOTTOM

Accessorio per cestello da 60 cm.

E' possibile inserire e posizionare gli accessori dedicati in totale libertà grazie ai sottili perni di metallo inseriti nella base di ciascun modulo. Nella realizzazione delle composizioni è importante tener conto dell'ingombro che occupa ogni modulo (n. fori).  
60-cm basket accessory.

The specially designed accessories can be fitted and positioned exactly as required using the thin metal pins in the base of each module. When creating compositions it is important to calculate the space required by each module (n. of holes).



31106494

WENGE'

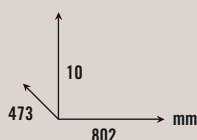
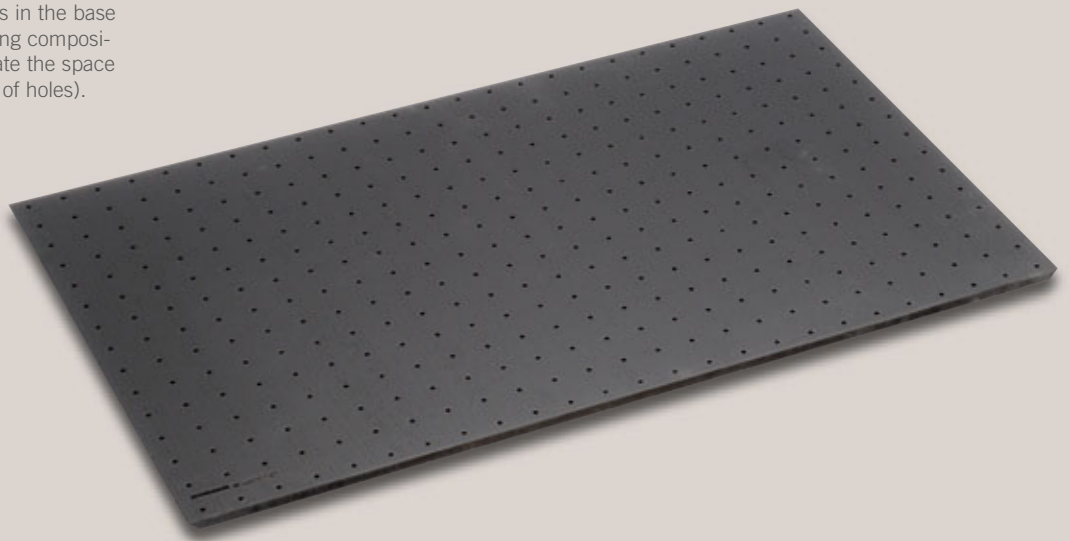
## BASE FORATA PER CESTELLI IN WENGE' PERFORATED WENGE' BASKET BOTTOM

Accessorio per cestello da 90 cm.

E' possibile inserire e posizionare gli accessori dedicati in totale libertà grazie ai sottili perni di metallo inseriti nella base di ciascun modulo. Nella realizzazione delle composizioni è importante tener conto dell'ingombro che occupa ogni modulo (n. fori).  
90-cm basket accessory.

90-cm basket accessory.

The specially designed accessories can be fitted and positioned exactly as required using the thin metal pins in the base of each module. When creating compositions it is important to calculate the space required by each module (n. of holes).



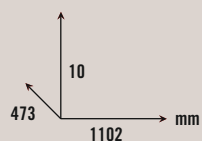
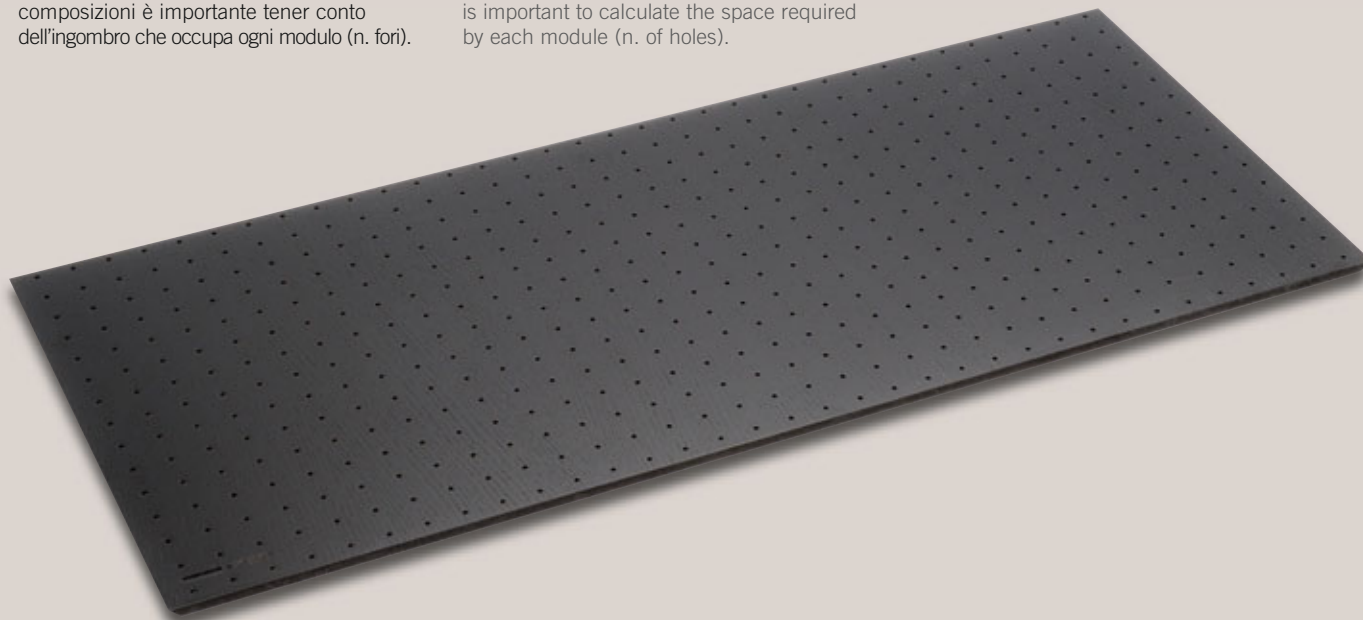
31106495

WENGE'

## BASE FORATA PER CESTELLI IN WENGE' PERFORATED WENGE' BASKET BOTTOM

Accessorio per cestello da 120 cm.  
E' possibile inserire e posizionare gli accessori dedicati in totale libertà grazie ai sottili perni di metallo inseriti nella base di ciascun modulo. Nella realizzazione delle composizioni è importante tener conto dell'ingombro che occupa ogni modulo (n. fori).

120-cm basket accessory.  
The specially designed accessories can be fitted and positioned exactly as required using the thin metal pins in the base of each module. When creating compositions it is important to calculate the space required by each module (n. of holes).

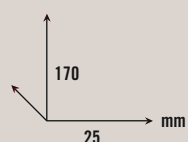
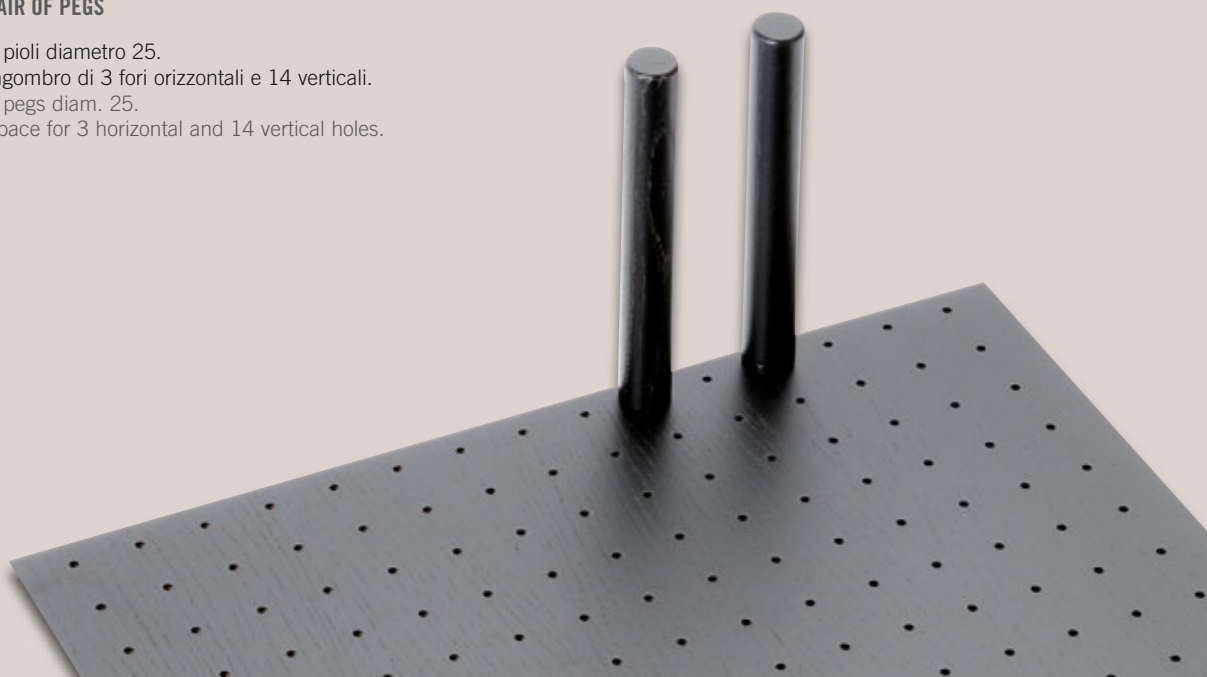


31106496

WENGE'

## COPPIA PIOLI PAIR OF PEGS

2 pioli diametro 25.  
Ingombro di 3 fori orizzontali e 14 verticali.  
2 pegs diam. 25.  
Space for 3 horizontal and 14 vertical holes.



31105826

WENGE'

# “BLINK”

ACCESSORI PER CESTELLI / BASKET ACCESSORIES

CODICE / CODE

FINITURE / FINISHES

ernestomeda

## PORTAVIVANDE BOTTLE RACK DRAWER

4 pareti perimetrali  
1 divisorio orizzontale  
4 divisori verticali.  
Ingombro  
di 10 fori orizzontali  
e 14 verticali.  
4 perimeter walls  
1 horizontal partition  
4 vertical dividers.  
Space for 10 horizontal  
and 14 vertical holes.



31105831

WENGE'



ACCESSORI PER CASSETTI E CESTELLI / DRAWER AND BASKET ACCESSORIES

**FUTURA**

acciaio / alluminio *steel / aluminium*

ernestomeda



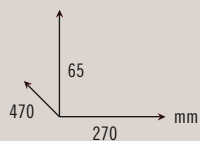
**FUTURA**

**ernestomeda**



## PORTAPOSATE CUTLERY TRAY

Accessorio per cassetto da 45 cm.  
6 vaschette acciaio  
1 telaio  
45-cm drawer accessory.  
6 Steel basins  
1 frame

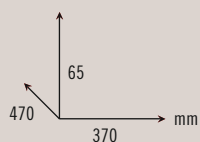


31100062

ACCIAIO  
STEEL

## PORTAPOSATE CUTLERY TRAY

Accessorio per cassetto da 60 cm.  
6 vaschette acciaio  
1 telaio  
2 scomparti  
60-cm drawer accessory.  
6 Steel basins  
1 frame  
2 compartments

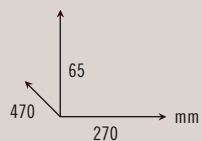


31100063

ACCIAIO  
STEEL

## PORTAPOSATE CUTLERY TRAY

Accessorio per cassetto da 60 cm.  
1 telaio  
4 scomparti  
60-cm drawer accessory.  
1 frame  
4 compartments

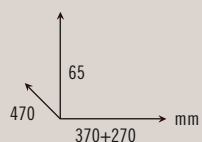


31100064

ACCIAIO  
STEEL

## PORTAPOSATE CUTLERY TRAY

Accessorio per cassetto da 90 cm.  
6+6 vaschette acciaio  
2 telai  
2 scomparti  
90-cm drawer accessory.  
6+6 steel basins  
2 frames  
2 compartments



31105080

ACCIAIO  
STEEL

# “FUTURA”

ACCESSORI PER CESTELLI / BASKET ACCESSORIES

CODICE / CODE

FINITURE / FINISHES

ernestomeda

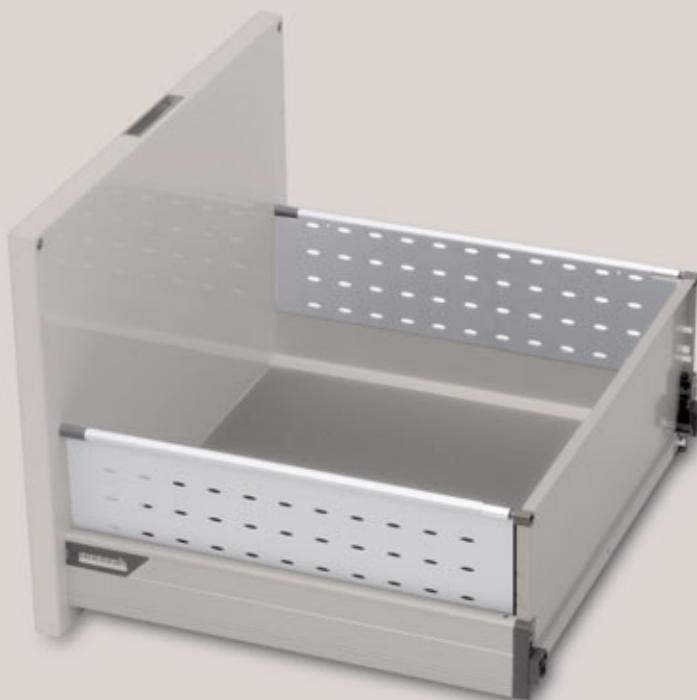
## BOX SIDE SINGOLO PER CESTELLO

in lamiera forata

### BOX SIDE FOR BASKET

perforated sheet

Accessorio per cestello da 50 cm.  
50-cm basket accessory.



3110096

ALLUMINIO  
ALUMINIUM

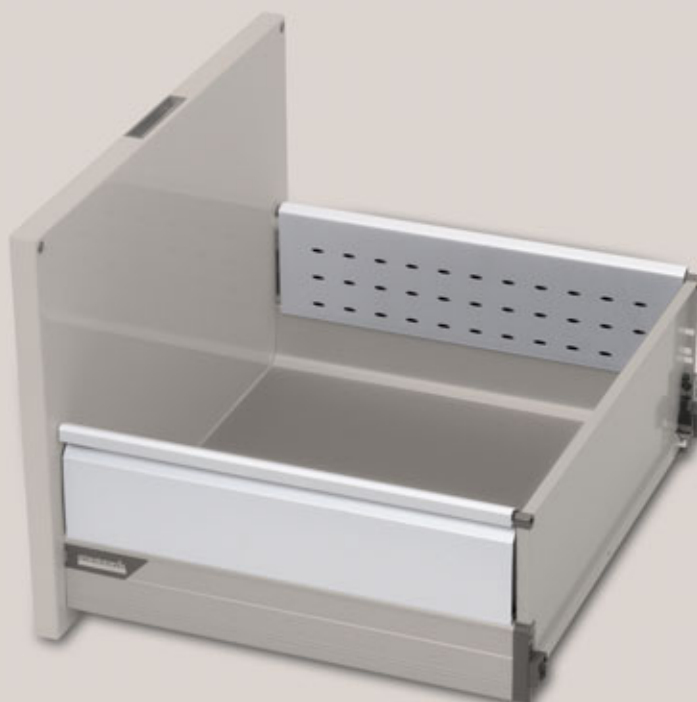
## BOX SIDE DOPPIO PER CESTELLO

in lamiera forata a doppia parete

### DOUBLE BOX SIDE FOR BASKET

double perforated sheet partition

Accessorio per cestello da 50 cm.  
50-cm basket accessory.



3110547

ALLUMINIO  
ALUMINIUM

# “FUTURA”

ACCESSORI PER CESTELLI / BASKET ACCESSORIES

CODICE / CODE

FINITURE / FINISHES

ernestomeda

## BOX SIDE DOPPIO PER CESTELLO

in lamiera forata a doppia parete

## DOUBLE BOX SIDE FOR BASKET

double perforated sheet partition

Accessorio per cestello da 50 cm.  
50-cm basket accessory.



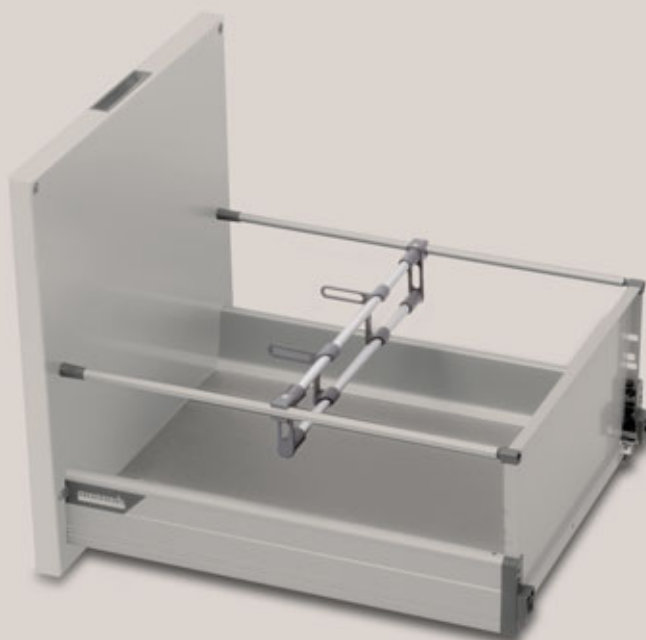
31105699

ACCIAIO CROMATO  
CHROME-STEEL

## DIVISORIO PER CESTELLO STANDARD

PARTITION FOR STANDARD BASKET

Accessorio per cestello da 45 cm.  
45-cm basket accessory.



31100069

ALLUMINIO  
ALUMINIUM

# “FUTURA”

ACCESSORI PER CESTELLI / BASKET ACCESSORIES

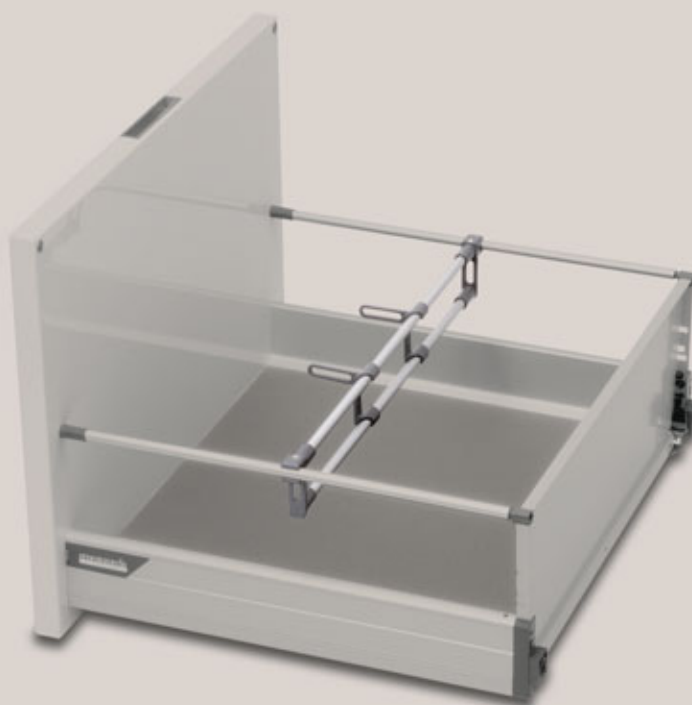
CODICE / CODE

FINITURE / FINISHES

ernestomeda

## DIVISORIO PER CESTELLO STANDARD PARTITION FOR STANDARD BASKET

Accessorio per cestello da 60 cm.  
60-cm basket accessory.



31100071

ALLUMINIO  
ALUMINIUM

## DIVISORIO PER CESTELLO STANDARD PARTITION FOR STANDARD BASKET

Accessorio per cestello da 90 cm.  
90-cm basket accessory.



31100073

ALLUMINIO  
ALUMINIUM

# “FUTURA”

ACCESSORI PER CESTELLI / BASKET ACCESSORIES

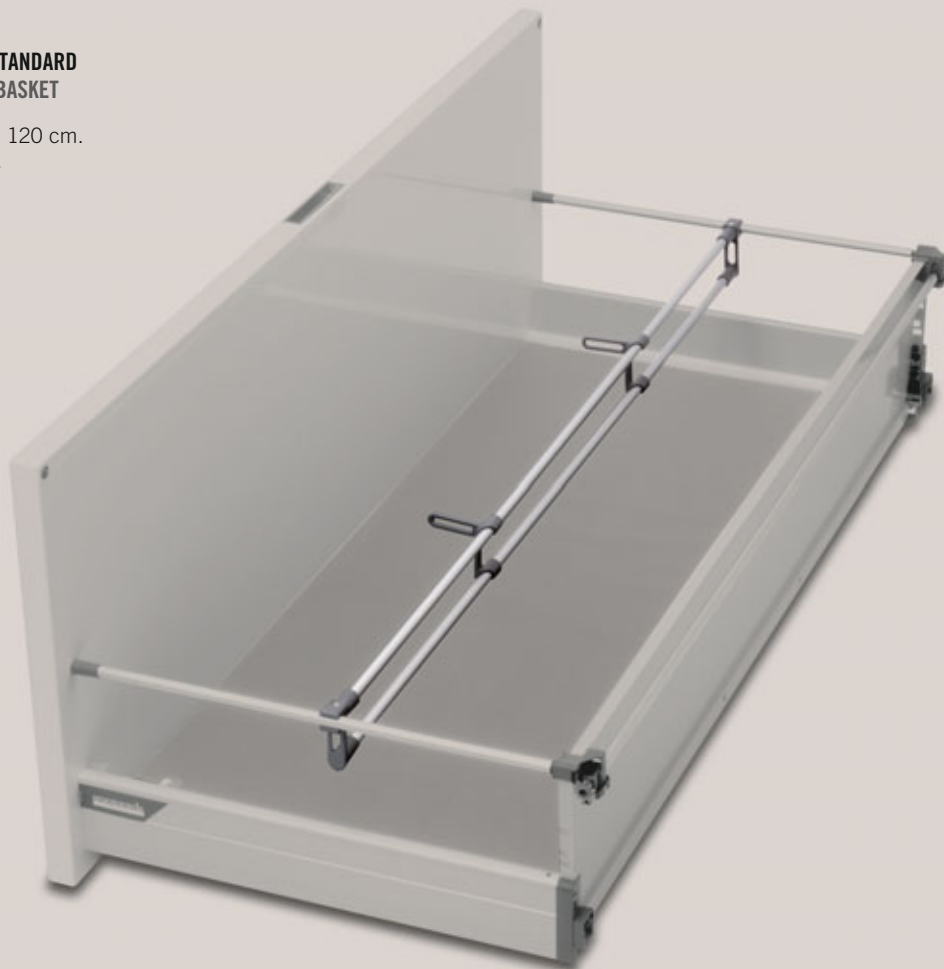
CODICE / CODE

FINITURE / FINISHES

ernestomeda

## DIVISORIO PER CESTELLO STANDARD PARTITION FOR STANDARD BASKET

Accessorio per cestello da 120 cm.  
120-cm basket accessory.



31100075

ALLUMINIO  
ALUMINIUM

## PORTAPIATTI PER CESTONE ESTRAIBILE DISH RACK FOR PULL-OUT BASKET

In materiale plastico ed acciaio.  
Può contenere piatti di diametro cm 18-32.  
Constructed in plastic material and steel.  
Can hold plates of 18 to 32 cm in diameter.



31100035

ACCESSORI PER CASSETTI / DRAWER ACCESSORIES

# PLANNER

materiale plastico *plastic material*

ernestomeda



**PLANNER**

**ernestomeda**



## PORTAPOSATE CUTLERY TRAY

Accessorio per cassetto da 30.

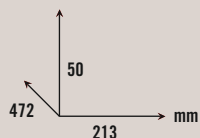
Separatori orizzontali fissi.

Non attrezzabile con nessun tipo di accessorio.

30 cm drawer accessory.

Fixed horizontal partitions.

Cannot be equipped with any type of accessories.



31106225

PLASTICA BIANCA  
WHITE PLASTIC

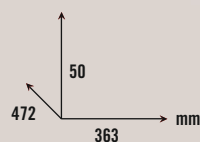
## PORTAPOSATE CUTLERY TRAY

Portaposate per cassetto da 45 cm con n. 7 divisori mobili.

Possibilità di attrezzare con n. 1 accessorio tipo 1.

45 cm drawer accessory with 7 movable partitions.

Can be equipped with 1 type 1 accessory.



31106226

PLASTICA BIANCA  
WHITE PLASTIC

# "PLANNER"

ACCESSORI PER CASSETTI / DRAWER ACCESSORIES

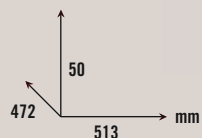
CODICE / CODE

FINITURE / FINISHES

ernestomeda

## PORTAPOSATE CUTLERY TRAY

Accessorio per cassetto da 60 cm con n. 7 divisori mobili.  
Possibilità di attrezzare n.1 accessorio tipo 1.  
60 cm drawer accessory with 7 movable partitions.  
Can be equipped with 1 type 1 accessory.

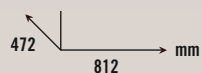
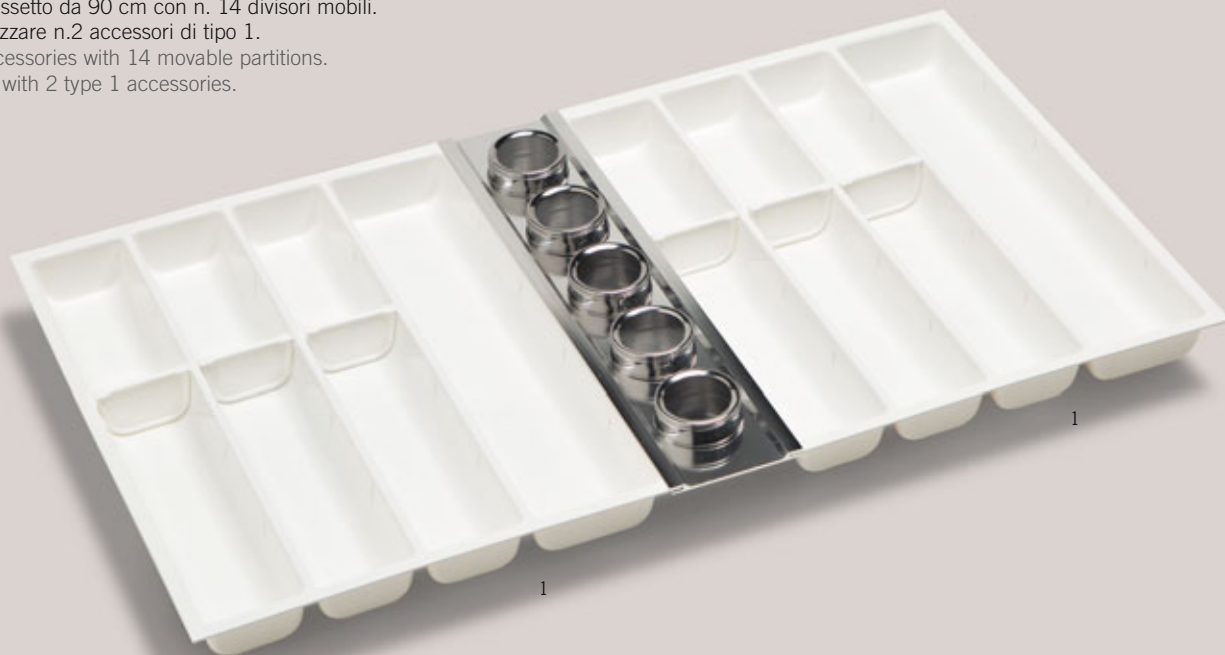


31106227

PLASTICA BIANCA  
WHITE PLASTIC

## PORTAPOSATE CUTLERY TRAY

Accessorio per cassetto da 90 cm con n. 14 divisori mobili.  
Possibilità di attrezzare n.2 accessori di tipo 1.  
90 cm drawer accessories with 14 movable partitions.  
Can be equipped with 2 type 1 accessories.



31106228

PLASTICA BIANCA  
WHITE PLASTIC

# "PLANNER"

ACCESSORI PER CASSETTI / DRAWER ACCESSORIES

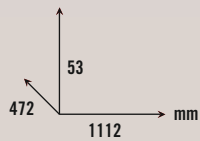
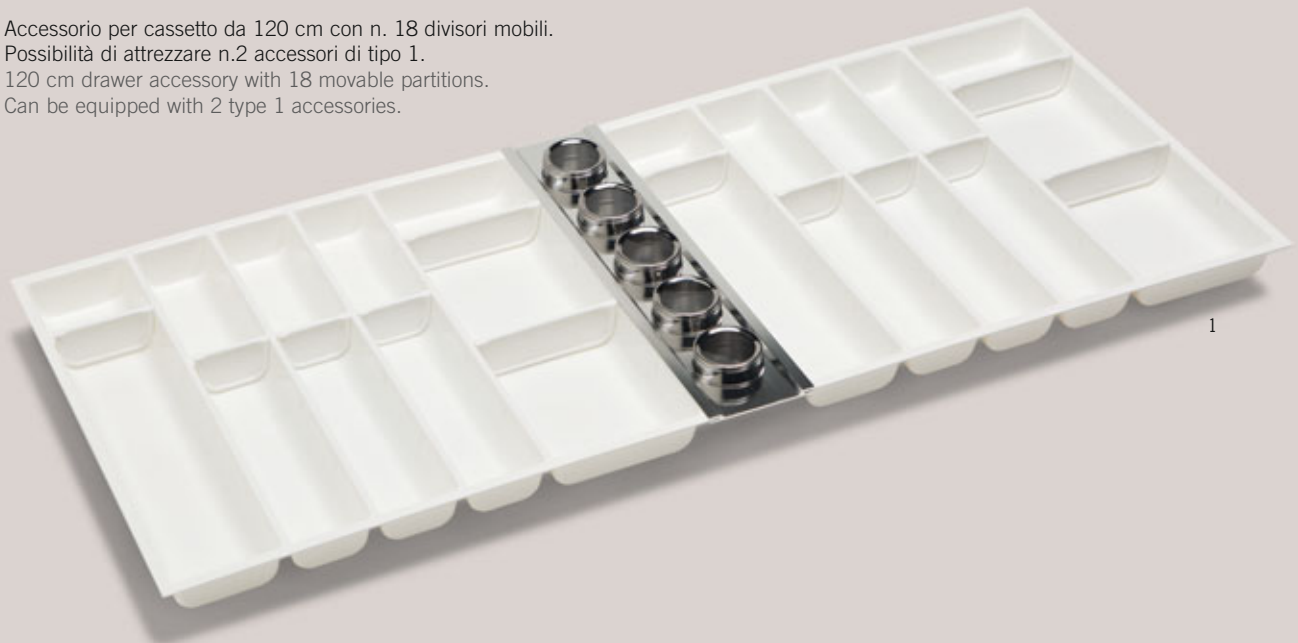
CODICE / CODE

FINITURE / FINISHES

ernestomeda

## PORTAPOSATE CUTLERY TRAY

Accessorio per cassetto da 120 cm con n. 18 divisori mobili.  
Possibilità di attrezzare n.2 accessori di tipo 1.  
120 cm drawer accessory with 18 movable partitions.  
Can be equipped with 2 type 1 accessories.

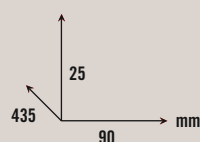


31106229

PLASTICA BIANCA  
WHITE PLASTIC

## PORTACOLTELLI KNIFE TRAY

Accessorio tipo 1.  
Type 1 accessory.



31106230

ROVERE  
OAK

# “PLANNER”

ACCESSORI PER CASSETTI / DRAWER ACCESSORIES

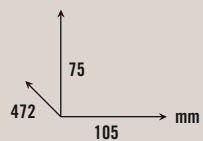
CODICE / CODE

FINITURE / FINISHES

**ernestomeda**

## COMPENSATORE VASETTI SPICE JAR INFILL STRIP

Si utilizza solo come compensatore.  
For use as infill strip only.



31106231

ACCIAIO  
STEEL

**LEGRABOX**

**TANDEMBOX\_ACCIAIO / *STEEL***

**TANDEMBOX\_ALLUMINIO / *ALUMINIUM***







ACCESSORI PER CASSETTI E CESTELLI / DRAWER AND BASKET ACCESSORIES

# sistema di guide e sponde runner and side system

ernestomeda

# sistema di guide e sponde / runner and side system

ACCESSORI PER CASSETTI E GESTELLI / DRAWER AND BASKET ACCESSORIES

ernestomeda

## LEGRABOX

Sponde laterali e retro in lamiera verniciata color antracite.  
Sistema compatibile solo con accessori Combiline e Blink. Per questi ultimi è necessario un adattatore in dotazione.  
Sides and back in anthracite colour painted sheet metal.  
System only compatible with Combiline and Blink accessories.  
An adaptor (supplied) must be used with the Blink range.



## TANDEMBOX

Sponde laterali in acciaio inox e retro in metallo verniciato simil cromo.  
Ringhierina verniciata finitura nikelata.  
Sides in stainless steel and back in chrome-look painted metal.  
Nickel-look painted rail.





# sistema di guide e sponde / runner and side system

ACCESSORI PER CASSETTI E CESTELLI / DRAWER AND BASKET ACCESSORIES

ernestomeda

## TANDEMBOX

Sponde laterali in alluminio anodizzato, finitura O chimico e retro in metallo verniciato grigio.

Ringhierina finitura alluminio.

Sides in "zero chemical" finish anodised aluminium and back in grey painted metal.  
Aluminium-finish rail.





**BASI / BASE UNITS**

**LE MANS**

**MAGIC CORNER**

**SLIDING CORNER**

**ARMADI / CUPBOARDS**

**LE MANS**

**RIPIANI CROMO / *CHROMED SHELVES***





ACCESSORI / ACCESSORIES

# angoli attrezzati equipped corner units

## BASI / BASE UNITS

### LE MANS

Sistema per angolari con ripiano "Arena classic" in metallo cromato e fondo in melaminico grigio antiscivolo. Estrazione completa dei ripiani girevoli. Portata 20 kg per ripiano.  
Corner unit system with "Arena classic" shelf in chromed metal with anti-slip grey melamine base panel. Revolving shelves have full extraction. Capacity 20 kg per shelf.



### MAGIC CORNER

Sistema per angolari con ripiano "Arena classic" in metallo cromato e fondo in melaminico grigio antiscivolo. Ripiani estraibili e girevoli. Con ammortizzatore.  
Portata ripiani interni: 9kg per ripiano.  
Portata ripiani esterni: 7kg per ripiano.  
Corner unit system with "Arena classic" shelf in chromed metal with anti-slip grey melamine base panel. Extracting revolving shelves. With cushioning system.  
Internal shelf capacity: 9 kg per shelf.  
External shelf capacity: 7kg per shelf.



## SLIDING CORNER

Sistema per angolari  
con con 4 cestelli in acciaio cromato.  
Meccanismo estraibile e girevole.  
La portata utile è di 10 kg per ogni cestello.  
Corner unit system  
with 4 chromed steel baskets.  
Extracting and revolving mechanism.  
The load capacity is 10 kg per basket.



## ARMADI / CUPBOARDS

### LE MANS

Sistema per angolari con ripiano  
"Arena classic" in metallo cromato  
e fondo in melaminico grigio antiscivolo.  
Estrazione completa dei ripiani girevoli.  
Portata 20 kg per ripiano.  
Corner unit system with "Arena classic"  
shelf in chromed metal with anti-slip  
grey melamine base panel.  
Revolving shelves have full extraction.  
Capacity 20 kg per shelf.





## RIPIANI CROMO CHROMED SHELVES

Ripiani in acciaio cromato.  
Capienti e resistenti  
per colonne angolari.  
Chromed steel shelves  
Strong and roomy,  
for corner tall units.







**MIX**

**VITRE**

**VETRO / *GLASS***

**CROMO / *CHROMED***

**DOUBLE**

**MELAMINICO / *MELAMINE***





ACCESSORI / ACCESSORIES

# ripiani shelves

## MIX

Ripiano vetro temperato grigio trasparente spessore 6 mm con telaio in alluminio finitura argento.  
Clear grey tempered glass shelf 6 mm thick with silver-finish aluminium frame.



## VITRE

Ripiano vetro temperato trasparente spessore 4 mm con telaio in alluminio finitura acciaio.  
Clear tempered glass shelf 4 mm thick with steel-finish aluminium frame.



# ripiani / shelves

ACCESSORI / ACCESSORIES

ernestomeda

## VETRO GLASS

Ripiano in vetro temperato trasparente  
spessore 6 mm.  
Clear tempered glass shelf 6 mm thick.



## CROMO CHROMED

Ripiano realizzato in filo metallico cromato.  
Chromed metal wire shelf.



## DOUBLE

Ripiano in melaminico sp. 18 mm con rinforzo in alluminio spessore 30 mm finitura acciaio. Il ripiano melaminico è disponibile nella stessa finitura della cassa - senape - grigio pallido - Optical 3D. Melamine shelf 18 mm thick with steel-finish aluminium stiffener 30 mm thick.

The melamine shelf is available in the same finish as the carcass: mustard - pale grey - Optical 3D.



## MELAMINICO MELAMINE

Ripiano in melaminico spessore 18 mm con bordi ABS. Disponibile nella stessa finitura della cassa - senape - grigio pallido - Optical 3D. Melamine shelf 18 mm thick with ABS edgings.

Available in the same finish as the carcass: mustard - pale grey - Optical 3D.





**ORGANIZER\_SISTEMA RETROBASE**  
*ORGANIZER\_BASE UNIT REAR TIDY SYSTEM*







ACCESSORI / ACCESSORIES

# ORGANIZER

sistema retrobase

*base unit rear tidy system*

ernestomeda

# “ORGANIZER”

ACCESSORI / ACCESSORIES

CODICE / CODE

ernestomeda

## MENSOLA CON BARRA ELETRIFICATA IN ROVERE DARK E ACCIAIO PORTAPRESE DARK OAK AND STEEL SHELF WITH SOCKET STRIP

Da abbinare al contenitore  
con tettino e foro passaggio cavi.  
For use with the container  
with lid and wiring hole



*Nella foto sono illustrati gli adattatori  
international e USB ordinabili a parte.  
The photo shows the international and USB  
adapters available for order separately.*

← 473 → mm

**MENSOLA / SHELF 75071815**  
**PORTAPRESA USB / USB SOCKET ADAPTER 31106271**  
**PORTAPRESA INTERNAZIONALE / INTERNATIONAL SOCKET ADAPTER 31106270**



*Nella foto sono illustrati  
gli adattatori Shuko e Italia.  
The photo shows the Schuko  
and Italian adapters.*

75071812

**MENSOLA / SHELF 75071815**  
**PORTAPRESA ITALIA / ITALIAN SOCKET ADAPTER 31106268**  
**PORTAPRESA SHUKO / SCHUKO SOCKET ADAPTER 31106269**

# "ORGANIZER"

ACCESSORI / ACCESSORIES

CODICE / CODE

ernestomeda

## ACCESSORIO PORTATAGLIERI IN ACCIAIO STEEL CHOPPING BOARD RACK

Con 4 taglieri in "Teflon".  
With 4 "Teflon" chopping boards.



← 387 → mm

7507181

## ACCESSORIO PORTABARATTOLI ROVERE DARK DARK OAK JAR HOLDER

Con barattoli in acciaio.  
With steel jars.



← 387 → mm

75071817

# “ORGANIZER”

ACCESSORI / ACCESSORIES

CODICE / CODE

ernestomeda

## MENSOLA ROVERE DARK E ACCIAIO CON PRESA SHUKO DARK OAK AND STEEL SHELF WITH “SCHUKO” SOCKET

Kit due prese con cornice cromata.  
Set of two sockets with chromed surround.



← 387 → mm

MENSOLA / SHELF 75071810  
PRESE / SOCKETS 31100640

## MENSOLA CON ROVERE DARK E ACCIAIO SHELF WITH DARK OAK AND STEEL



← 387 → mm

75071812

# “ORGANIZER”

ACCESSORI / ACCESSORIES

CODICE / CODE

ernestomeda

## ACCESSORIO PORTACOLTELLI KNIFE RACK ACCESSORY

In rovere dark e acciaio.  
In dark oak and steel.



← 387 → mm

75071809

## ACCESSORIO PORTAROTOLO KITCHEN ROLL HOLDER ACCESSORY

In rovere dark e acciaio.  
In dark oak and steel.



← 342 → mm

75071813

# “ORGANIZER”

ACCESSORI / ACCESSORIES

CODICE / CODE

ernestomeda

## ACCESSORIO PORTAVASCHE BASIN HOLDER ACCESSORY

In rovere dark con vasche  
in acciaio.  
In dark oak with steel basins.



← 387 → mm

75071814

## ACCESSORIO PORTASPEZIE SPICE RACK ACCESSORY

In rovere dark e acciaio  
con 4 barattoli portaspezie  
da 6 cm in acciaio.  
In dark oak and steel  
with 4 steel 6 cm spice jars.



← 342 → mm

75071816